

**"KAJMA II" water meter well frost resistant**

**PN16**

**WATER**



## Product description (standard execution):

- Be installed in regions of high ground water levels without risking the influence of upward forces, while readings are possible without the necessity to remove water necessity to remove water
- Maintains temperature above zero near the water meter – it is provided with thermal insulation
- Height 1200
- Internal diameter 500 mm
- Utilizes the earth's geothermal heat
- Readings of the water meter status without going down the well
- May be installed in regions of high ground water levels – the water meter is placed 30 cm below the cover (ground level)
- Height adjustment by means of spacing rings
- The water-meter set has standard connectors for water-meter DN20 and PE32 DN32 connectors
- Not affected by upward forces (which is the case with watertight wells)
- No mobile elements (e.g. hoses) which are trouble spots
- Lightweight design – ensures easy transport and installation by a single person
- Improves working and operating conditions eliminates the necessity to use neodymium magnets
- Is safe for the user
- Readings are possible even if other people are present
- All elements resistant to corrosion

## Application:

It is possible to obtain the readings outside the premises while both the system and the water meter are protected against freezing

## Installation:

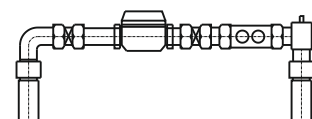
Recommended installation in lawns. If it is necessary to install in passageways the well should be installed under a DN600 manhole of adequate strength

## Equipment:

Water meter  
Vent  
Drain tap  
Strainer  
ISO connection  
Cover cast iron

## Execution variant:

Connectors for the water meter DN15; DN25 and PE connection DN40  
distance rings: 100; 200; 300  
Another configuration of the console: Water meter connectors: Shut-off valves  
Anti-pollution valve Automatic air valve PE connectors



Description:  
With KAJMA II frost-resistant water meter well water meter readings can be taken outside the domestic premises. In addition the water system and the metering device is protected against freezing. With the water meter located 30 cm below the ground level positive temperatures are maintained in the winter period thanks to the application of a thermally insulated double side casing and a cover and the geothermal properties of soil. The device is equipped with an open bottom and therefore may be installed in areas where the ground water levels are high with no negative influence of uplift pressure forces and the meter readings can be taken

Statement of the elements

- 1. Cover with and isolating plug made of plastic
- 2. Insulated well upper body
- 3. Well lower body
- 4. Flange

Water meter set includes:

- Cut-off valves
- Antipollution valves, EA type
- Couplings PE – DN 32 (25; 40)
- Vent
- Water meter fittings

Versions of KAJMA II:

Standard execution	Dz outer tube[mm]	Catalog number
Standard version – no water meter console included	-	1850.00.00
Single water meter DN15	32, (25, 40)	1850.15.00
Single water meter DN20	32, (25, 40)	1850.20.00
Single water meter DN25	32, (25, 40)	1850.25.00
Two water meter DN20	32, (25, 40)	1850.20.20
Single water meter DN15 and Single water meter DN20	32, (25, 40)	1850.15.20

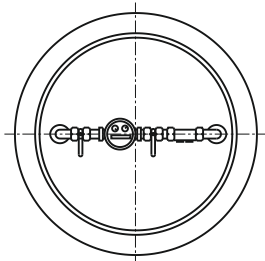
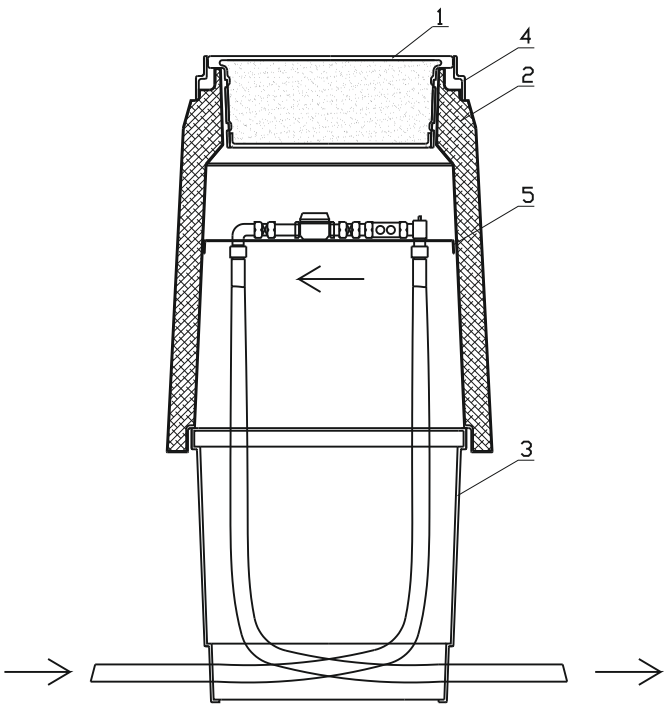


Diagram of console for two water meters, e.g. : often used as an additional water meter for "watering lawns".

