

Knife gate valve for underground instalations interflange

PN10
PN16

SEWAGE



Knife gate valve DN80

Product description (standard execution):

- Bidirectional tightness
- Knife circumferential seal profile with steel insert
- Knife cleaning scrapers
- Ductile cast iron monolithic body EN-GJS 400-15
- Stainless steel 1.4021 spindle with rolled thread
- Low friction spindle bearing by plastic and brass plain washers
- Total protection against outside dirt penetration
- Gland sealing – o-ring NBR and non-asbestos cord
- Wedge nut made of forged brass
- Epoxy coating minimum 250 microns according to EN 14901
- Stainless steel bolts and washers
- Product according to EN 1074-1, EN 1074-2; EN 1171
- Flange connection according to EN 1092-2 (DIN 2501) pressure PS2,5; PS6; PS10
- Face to face according to producer documentation
- Product marking according to EN 19; EN 1074

Application:

Water and sewage networks and tanks; pulverized products, transport of non aggressive liquids.

Working conditions:
temp. up +70°C
pressure up to 1,0 MPa

Test control:

Hydraulic test according to EN 1074-1; EN 1074-2; EN 12266-1
Seat: 1,1 xPN
Body: 1,5 x PN
Operation torque test.

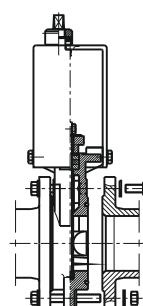
Accessories:

Extension spindle - see: 9010, 9011
Extension spindle for linear gear - see: 9025
Pillar with handwheel - see: 9113
Pillar for electric actuator - see: 9114
Handwheel - see: 9301
Street box - see: 9501

Execution variant:

With non-rising and rising spindle + linear gear for >DN350
Spindle made of stainless steel 1.4301 or duplex steel 1.4462
With electric actuators - see: 2906
With deflector

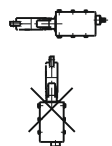
Installation:

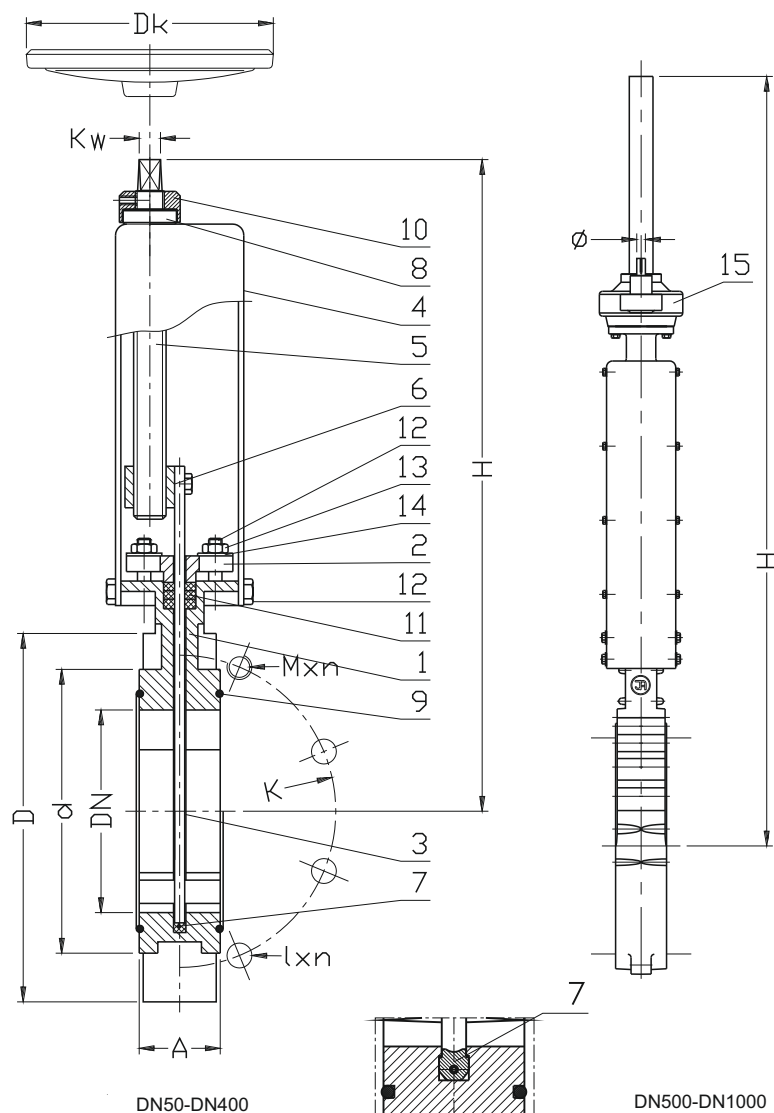


All diameters (DN)



Non acceptable





No	Part	Standard execution
1	Body	Ductil cast iron EN-GJS-400-15 EN 1563
2	Clamping plate	Ductil cast iron EN-GJS-400-15 EN 1563
3	Knife	Stainless steel 1.4301, 1.4404 (*) EN 10088-1
4	Pillar	Steel 1.0038 EN 10025-2
5	Spindle	Stainless steel 1.4021, 1.4301 (*), 1.4404 (*) EN 10088-1
6	Spindle nut	Brass CW617N, Bronze CW306G (*) EN 1412
7	Gasket	Rubber NBR EN-ISO 1629
8	Sliding bushing	Producer catalogue
9	Seal o-ring	Rubber NBR EN-ISO 1629
10	Cover sleeve	Stainless steel 1.4021, 1.4301 (*), EN 10088-1
11	Gland seal	PACKAGE: rubber NBR, EN-ISO 1629 + with non-asbestos cord
12	screw	Stainless steel A2, A4 (*) EN ISO 4014
13	Nut	Stainless steel A4 EN ISO 4032
14	Washer	Stainless steel A2 EN ISO 7091
15	Gearbox	Producer catalogue

(*) -other material variants on special request

Standard: DN50 to DN400 - non-rising spindle
DN500 to DN1000 - rising spindle + linear gear

DN	PN	PS	K	D	d	Kw/R	I x n	M x n	A	Dk	H	Turns for full open	Weight
[mm]	[bar]						[mm]		by drawing		non-rising spindle (rising)		[kg]
50	10-16	10	125	165	99	Kw 12	-	M16x4	48	200	281	14	10
65	10-16	10	145	185	118	Kw 12	-	M16x4	48	200	315	18	12
80	10-16	10	160	200	132	Kw 14	Ø19x6	M16x2	52	200	333	22	13
100	10-16	10	180	220	156	Kw 14	Ø19x6	M16x2	52	250	363	27	16
125	10-16	10	210	250	184	Kw 14	Ø19x6	M16x2	56	250	420	33	22
150	10-16	10	240	285	212	Kw 17	Ø23x6	M20x2	56	250	487	32	27
200	10	10	295	340	266	Kw 17	Ø23x6	M20x2	70	320	568	42	47
250	10	10	350	395	319	Kw 17	Ø23x8	M20x4	70	320	674	52	60
300	10	10	400	445	370	Kw 17	Ø23x8	M20x4	76	320	780	62	74
350	10	10	460	505	430	Kw 19	Ø23x10	M20x6	76	320	840	72	90
400	10	10	515	565	480	Kw 24	Ø28x10	M24x6	86	450	980	68	106
500	10	6	620	670	582	Ø30	Ø28x12	M24x8	114	630	(1820)1300	85	252
600	10	6	725	780	682	Ø30	Ø31x12	M27x8	114	630	(2130)1480	102	300
700	10	2,5	840	910	794	Ø30	Ø31x14	M27x10	165	630	(2495)	118	569
800	10	2,5	950	1015	901	Ø30	Ø34x14	M30x10	190	630	(2850)	116	696
900	10	2,5	1050	1115	1001	Ø30	Ø34x16	M30x12	203	815	(3160)	115	868
1000	10	2,5	1160	1230	1112	Ø30	Ø37x16	M33x12	216	815	(3428)	127	1175

We reserve the rights to modify the production program and the given data without separate notices due to the permanent company development.