

Metal seated gate valve
 flanged DN40-DN300

PN10
PN16
INDUSTRY


Gate valve 2110 DN80

Product description (standard execution):

- Body and wedge face seal rings made of brass
- Wedge nut made of forged brass - replaceable
- Under pressure replaceable packing cork
- Stainless steel spindle with rolled thread
- Low friction double spindle bearing acting both horizontal and vertical way
- O-ring spindle sealing, packing cork protected against medium
- Forged packing cork protected against unscrewing
- Body bonnet and wedge made of ductile cast iron
- Packing cork protected against dirt penetration
- Polyvinyl coating minimum 100 microns according to EN 14901
- Product according to EN 1171
- Flange connection according to EN 1092-2 (DIN 2501) pressure PN10; PN16
- Face to face according to EN 558-A1 row 14 F4 (DIN 3202)
- Product marking according to EN 19; EN 1171

Application:

Industrial water, water and air networks and tanks; heating installations and other inert liquids.

Working conditions:

temp. up +120°C

pressure up to 1,6 MPa

Test control:

Water pressure test according to EN 1074; EN 1074-2;

EN 12266-1

Seat: 1,1 xPN

Body: 1,5 x PN

Operation torque test

Accessories:

Extension spindle - see: 9010, 9011

Pillar with handwheel - see: 9113

Pillar for electric actuator - see: 9114

Street box - see: 9501, 9503, 9509

Execution variant:

Ductile cast iron EN-GJS 500-7

With SS body bonnet screws

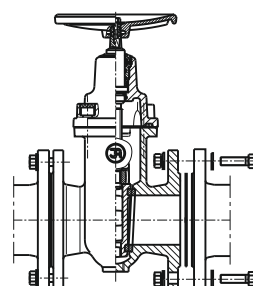
Packing cork, spindle nut - bronze

For actuator

With electric or pneumatic actuators - see: 2910

With inductive or electromechanical sensors

With opening indicator

Installation:


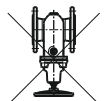
Recommended

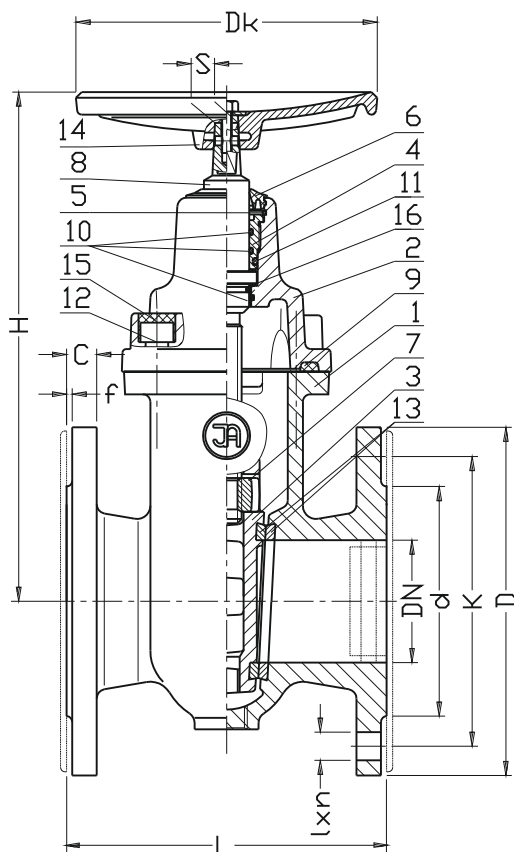


Acceptable



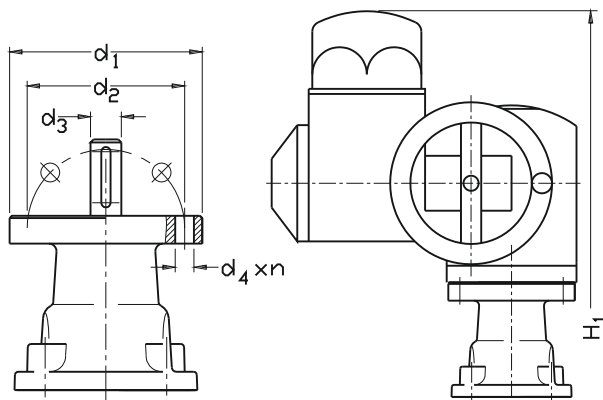
Not acceptable





Product version:
For actuator 2110

Electric actuator 2910



No.	Part	Standard execution
1	Body	Ductile cast iron EN-GJS 400-15 EN-GJS 500-7 (*) EN 1563
2	Bonnet	Ductile cast iron EN-GJS 400-15 EN-GJS 500-7 (*) EN 1563
3	Wedge	Ductile cast iron EN-GJS 400-15, EN 1563
4	Packing cork	Brass CW617N EN 12165 Bronze CC499K EN 1982 (*)
5	Protection ring	Steel 1.1260
6	Cleaning gasket	Rubber EPDM ISO 1629
7	Spindle nut	Brass CW617N EN 12165 Bronze CC499K EN 1982 (*)
8	Spindle	Stainless steel 1.4301 EN 10088-1
9	Body-bonnet gasket	Rubber EPDM ISO 1629
10 11	O-ring	Rubber EPDM ISO 1629
12	Screw	Steel Zn/Fe5, Stainless steel (*) EN ISO 4762
13	Ring	Brass CW617N EN 12165
14	Handwheel	Grey iron EN-GJL-250 EN 1561
15	Screw stoper	Wax
16	Washer	Tarnoform 300 EN ISO 1874-1
(*) - other material variants on special request		

DN	PN	L	H	H1	d	D PN16/PN(10)	K PN16/PN(10)	C	f	I PN16/PN(10)	n	d1	d2	d3	d4	S	Dk	LH thread	Actuator	Turns for full open	Weight
[mm]	[bar]																		-	-	[kg]
40	10-16	140	230	461	84	150	110	19	3	19	4	90	70	20	9x4	14	200	Tr16x4	SA 7.6 F7	15	11
50	10-16	150	250	481	99	165	125	19	3	19	4	90	70	20	9x4	14	200	Tr16x4		18	13
65	10-16	170	280	507	118	185	145	19	3	19	4	125	102	20	11x4	17	200	Tr16x4		20	18
80	10-16	180	310	530	132	200	160	19	3	19	8	125	102	20	11x4	17	200	Tr16x4		26	21
100	10-16	190	350	563	156	220	180	19	3	19	8	125	102	20	11x4	19	250	Tr20x4	SA 10.2 F10	30	30
125	10-16	200	395	604	184	250	210	19	3	19	8	125	102	20	11x4	19	250	Tr24x5		29	42
150	10-16	210	450	675	211	285	240	19	3	23	8	125	102	20	11x4	19	250	Tr24x5		36	54
200	10-16	230	510	750	266	340	295	20	3	23	12(8)	125	102	20	11x4	24	320	Tr24x5		46	80
250	10-16	250	625	875	319	405(395)	355(350)	22	3	28(23)	12	175	140	30	18x4	27	320	Tr32x6	SA 14.2 F14	48	98
300	10-16	270	710	950	370	460(445)	410(400)	25	4	28(23)	12	175	140	30	18x4	27	320	Tr32x6		57	130

We reserve the rights to modify the production program and the given data without separate notices due to the permanent company development.