

Metal seated gate valve
 flanged DN350-DN600

PN10
PN16
INDUSTRY


Gate valve 2110 DN600



Gate valve 2910 DN600

Product description (standard execution):

- Body bonnet and wedge made of ductile cast iron EN-GJS 400-15
- Body and wedge face seal rings made of brone, stainless steel
- Wedge nut made of forged brass - replaceable
- Under pressure replaceable packing cork
- Stainless steel spindle with rolledt hread
- Low friction double spindle bearing acting both horizontal and vertical way
- O-ring spindle sealing, packing cork protected against medium
- Forged packing cork protected against unscrewing
- Packing cork protected against dirt penetration
- Body bonnet Zinc coated screws protected by wax
- Polyvinyl coating minimum 100 microns according to EN 14901
- Product according to EN 1171
- Flange connection according to EN 1092-2 (DIN 2501) pressure PN10; PN16
- Face to face according to EN 558-A1 row 14 F4 (DIN 3202)
- Product marking according to EN 19; EN 1171

Application:

Industrial water, water and air networks and tanks; heating installations and other inert liquids.

Working conditions:

temp. up +120°C

pressure up to 1,6 MPa

Test control:

Water pressure test according to EN 1074; EN 1074-2;

EN 12266-1

Seat: 1,1 xPN

Body: 1,5 x PN

Operation torque test

Accessories:

Extension spindle - see: 9010, 9011

Pillar with handwheel - see: 9113

Pillar for electric actuator - see: 9114

Street box - see: 9501,9503, 9509

Execution variant:

Ductile cast iron EN-GJS 500-7

With SS body bonnet screws

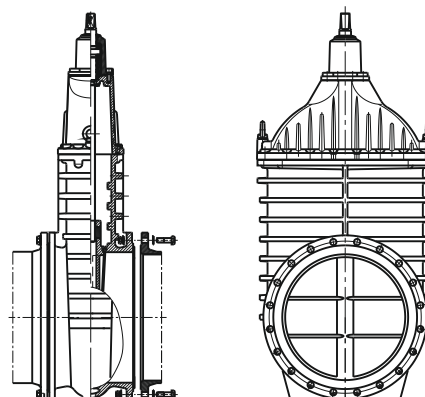
Packing cork, spindle nut - bronze

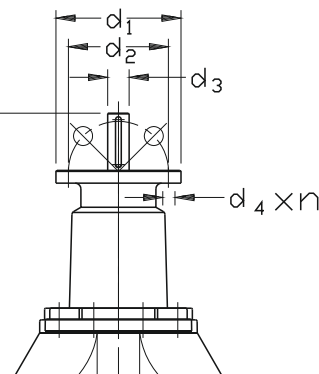
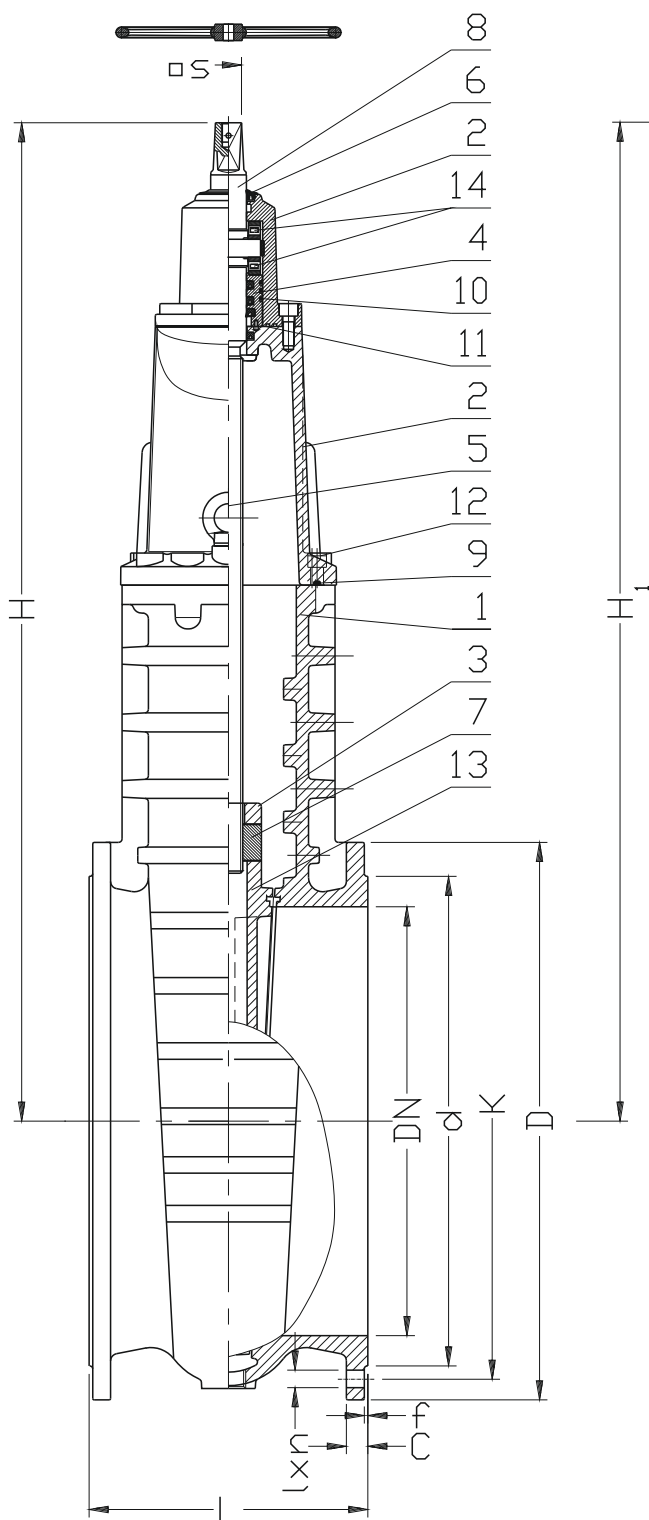
For actuator

With electric or pneumatic actuators - see: 2910

With inductive or electromechanical sensors

With opening indicator

Installation:




No.	Part	Standard execution
1	Body	Ductile cast iron EN-GJS-400-15 EN-GJS 500-7 (*) EN 1563
2	Bonet	Ductile cast iron EN-GJS-400-15 EN-GJS 500-7 (*) EN 1563
3	Wedge	Ductile cast iron EN-GJS-400-15 EN 1563
4	Packing cork	Brass CW617N EN 12165 Bronze CC499K (*) EN 1982
5	Hoisting hook	Steel Fe/Zn5 EN ISO 4017
6	Cleaning gasket	Rubber EPDM ISO 1629
7	Spindle nut	Brass CW617N EN 12165 Bronze CC499K (*) EN 1982
8	Spindle	Stainless steel 1.4021 EN 10088-1
9	Body-bonet gasket	Rubber EPDM ISO 1629
10	O-ring	Rubber EPDM ISO 1629
11	Screw	Steel Fe/Zn5, Stainless steel (*) EN ISO 4762
12	Ring	Stainless steel 1.4021 EN 10088-1 Bronze EN 1982
13	Bearing	Catalogue producer
(*) - other material variants on special request		

DN	L	H	H1	d PN16 (PN10)	D PN16 (PN10)	K PN16 (PN10)	I PN16 (PN10)	n PN16 (PN10)	C	f	d1	d2	d3	d4 x n	n PN16 (PN10)	S	Weight
[mm]																[mm]	[kg]
350 (**)	290	860	785	429	520 (505)	470 (460)	28 (23)	16	27	4	175	140	30	18x4	16	32	280
400 (**)	310	1020	1060	480	580	525 (515)	31 (28)	16	28	4	175	140	30	18x4	16	32	315
500 (**)	350	1220	1240	609 (582)	715 (670)	650 (620)	34 (28)	20	32	4	175	140	30	18x4	20	36	475
600	390	1390	1400	720 (682)	840 (780)	770 (725)	37 (31)	20	36	5	175	140	30	18x4	20	36	665

(**) on request

We reserve the rights to modify the production program and the given data without separate notices due to the permanent company development.