

Resilient seated gate valve for gas with PE pipe ends

PN10

GAS



With Protegol coating



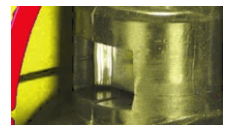
Gate valve DN100



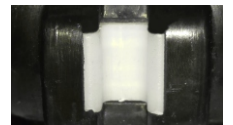
Packing cork protected against unscrewing and fully covered by additional cleaning gasket



Horizontal and vertical double spindle bearing



Replaceable wedge nut



Application of low friction sliding element

Product description (standard execution):

- Body bonnet and wedge made of ductile cast iron EN-GJS 400-15
- Full bore gate valve
- NBR fully vulcanised wedge
- Application of low friction sliding element
- Wedge nut made of forged brass - replaceable
- Stainless steel spindle with rolled thread
- Low friction double spindle bearing acting both horizontal and vertical way
- O-ring spindle sealing packing cork protected against contact with medium
- Under pressure replaceable packing cork
- Forged packing cork protected against unscrewing
- Packing cork protected against dirt penetration
- Body bonnet Zinc coated screws protected by wax
- Epoxy coating minimum 250 microns according to EN 14901 GSK RAL certificate
- Product according to EN 13774
- End connectors made of PE pipe 100 SDR 11
- The PE pipe end connectors enables direct welding into PE pipes
- PE/Steel connection sealed with a plastic shrink hose ring
- Product marking according to EN 19; EN 1171

Application:

Gas lines networks.
Working conditions:
temp. from -10°C up +40°C
pressure up to 1 MPa

Execution variant:

SS body bonnet screws
Connectors adapted for PE 100 SDR17
With Protegol coating

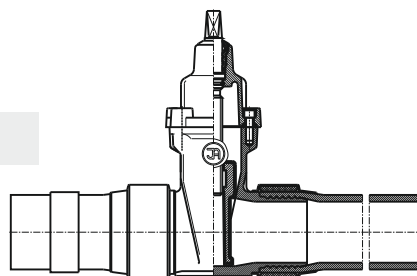
Test control:

Water pressure test according to EN 1074-1, EN 1074-2, EN 12266-1
Seat: 1,1 x PN;
Body: 1,5 x PN
Air pressure test according to EN 12266-1
Seat: 1,1 x PN;
Body: 1,1 x PN
Operation torque test.

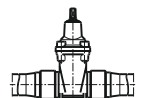
Accessories:

Extension spindle - see: 9006, 9007
Pillar with handwheel - see: 9113
Extension spindle with position indicator - see 9020, 9021
Pillar for electric actuator - see: 9114
Street box - see: 9505, 9506, 9507, 9508

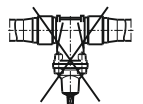
Installation:

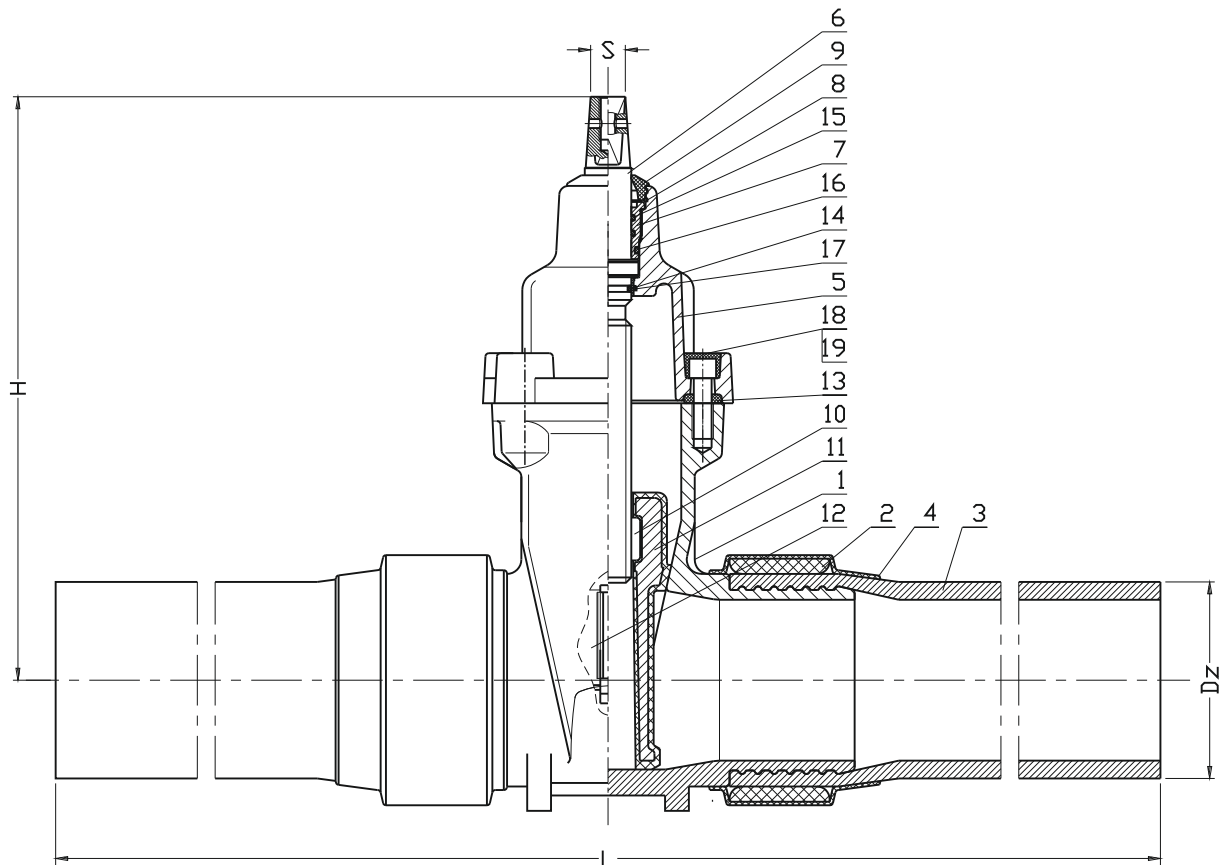


Recommended



Non acceptable





DN	H	Dz	L	S	Turns for full open	Weight
[mm]						[kg]
25	130	32	800	12	7,5	4
32	145	40	800	12	9	5
40	220	50	850	14	11	6
50	230	63	850	14	13,5	11
65	265	75	860	17	14	13
80	290	90	860	17	17	21
100	325	110	900	19	21	24
125	365	125	1100	19	26	33
150	457	160	1100	19	26	49
150	457	180	1100	19	26	52
200	534	200	1100	24	34,5	76
200	534	225	1100	24	34,5	80
250	633	250	1200	27	42,5	102
250	633	280	1200	27	42,5	110
300	708	315	1300	27	51	150
300*	708	355	1300	27	51	175

* On request

No.	Part	Standard execution
1	Body	Ductile cast iron EN-GJS-400-15 EN 1563
2	Clamping ring	Steel 1.0037 EN 10025-2
3	PE pipe ends	PE 100 SDR 11 EN 1555-2
4	Shrink hose ring	Plastic
5	Bonnet	Ductile cast iron EN-GJS-400-15 EN 1563
6	Spindle	Stainless steel 1.4021 EN 10088-1
7	Packing cork	Brass CW617N EN 12165
8	Protection ring	Steel 1.1260
9	Cleaning gasket	Rubber NBR EN ISO 1629
10	Spindle nut	Brass CW617N EN 12165
11	Wedge	Brass CW617N EN 12165 (DN25-32) Ductile cast iron (DN40-DN300) EN-GJS-400-15 EN 1563 rubber NBR acc. to: EN ISO 1629
12	Wedge slider	Tarnofom 300 EN-ISO 1874-1
13	Body-bonnet gasket	Rubber NBR EN ISO 1629
14	O-ring	Rubber NBR EN ISO 1629
17		
18	Screw	Steel Fe/Zn5, stainless steel EN ISO 4762
19	Screw stopper	Wax

- other material variants on special request

We reserve the rights to modify the production program and the given data without separate notices due to the permanent company development.