

Resilient seated gate valve for gas with steel spigot ends

PN10
PN16

GAS



With Protegol coating



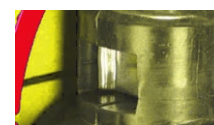
Gate valve DN80



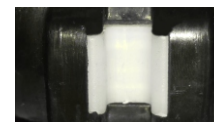
Packing cork protected against unscrewing and fully covered by additional cleaning gasket



Horizontal and vertical double spindle bearing



Replaceable wedge nut



Application of low friction sliding element

Product description (standard execution):

- Cast Steel Body
- Bonnet and wedge made of ductile cast iron EN-GJS 350-22 LT
- Full bore gate valve
- NBR fully vulcanised wedge
- Application of low friction sliding element
- Wedge nut made of forged brass - replaceable
- Stainless steel spindle with rolled thread
- Low friction double spindle bearing acting both horizontal and vertical way
- O-ring spindle sealing, packing cork protected against contact with medium
- Under pressure replaceable packing cork
- Forged packing cork protected against unscrewing
- Packing cork protected against dirt penetration
- Body bonnet Zinc coated screws protected by wax
- Epoxy coating minimum 250 microns according to EN 14901 GSK RAL certificate
- Product according to EN 13774
- Pipe connectors made of steel pipe for flammable media transmit
- Product marking according to EN 19, EN 1171

Application:

Gas lines networks.
Working conditions:
Temp. from -30°C up +60°C
pressure up to 1,6 MPa

Test control:

Water pressure test according to EN 1074-1, EN 1074-2, EN 12266-1
Seat: 1,1 x PN;
Body: 1,5 x PN
Air pressure test according to EN 12266-1
Seat: 1,1 x PN;
Body: 1,1 x PN
Operation torque test.

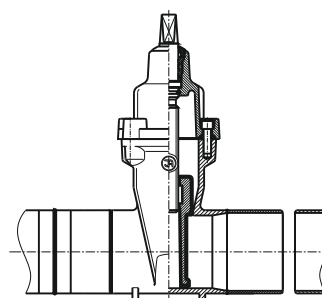
Accessories:

Extension spindle - see: 9006, 9007
Extension spindle with position indicator - see 9020, 9021
Pillar with handwheel - see: 9113
Pillar for electric actuator - see: 9114
Handwheel - see: 9301
Street box - see: 9505, 9506, 9507, 9508

Execution variant:

SS body and bonnet screws
With ISO top flange for actuator
With electric or pneumatic actuator
With inductive or electromechanical sensor
With opening indicator
With Protegol coating

Installation:



Recommended

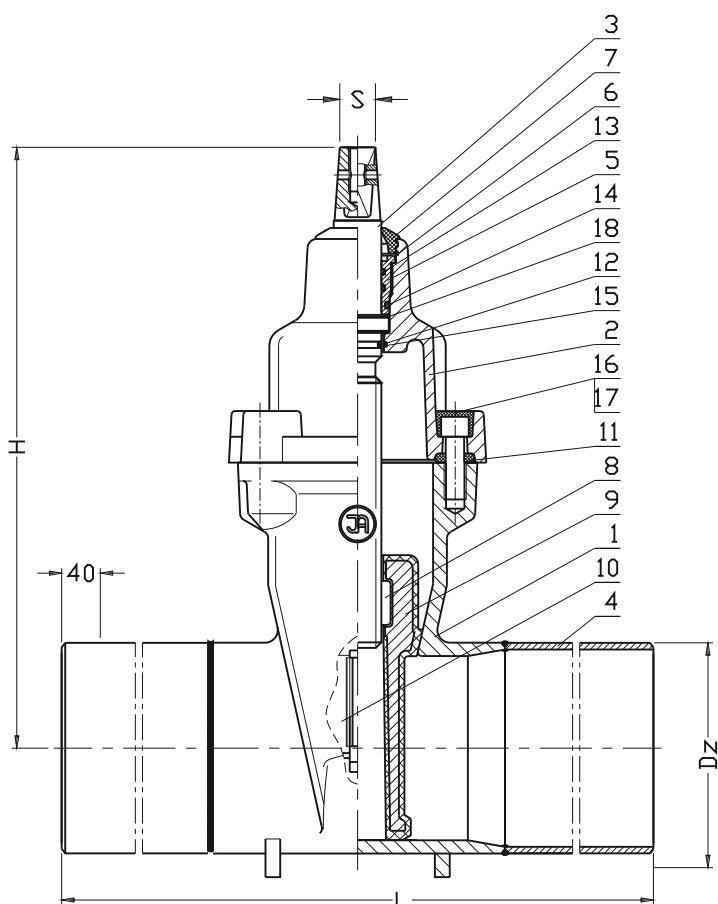


Acceptable



Non acceptable





No.	Part	Standard execution
1	Body	Cast steel G20Mn5N EN 10213
2	Bonnet	Ductile cast iron EN-GJS-350-22-LT EN 1563
3	Spindle	Stainless steel 1.4021 EN 10088-1
4	Pipe ends	Steel 1.0582 (L360 NB) EN ISO 3183
5	Packing cork	Brass CW617N EN 12165
6	Protection ring	Steel 1.1260
7	Cleaning gasket	Rubber NBR EN ISO 1629
8	Spindle nut	Brass CW617N EN 12165
9	Wedge	Ductile cast iron EN-GJS-350-22-LT EN 1563 Rubber NBR acc. to: EN ISO 1629
10	Wedge slider	Tarnoform 300 EN-ISO 1874-1
11	Body-bonnet gasket	Rubber NBR EN ISO 1629
12 15	O-ring	Rubber NBR EN ISO 1629
16	Screw	Steel Fe/Zn5, stainless steel EN ISO 4762
17	Screw stopper	Wax
18	Washer	Tarnoform 300 EN ISO 1874-1

- other material variants on special request

DN	H	Dz	L	S	Turns for full open	Weight
[mm]						[kg]
50	230	60,3	570	14	13,5	9
80	290	88,9	550	17	17	16
100	325	108,0	520	19	21	18
100	325	114,3	520	19	21	19
150	457	159,0	530	19	26	43
150	457	168,3	530	19	26	45
200	534	219,1	570	24	34,5	68
250	633	273,0	590	27	42,5	95
300	708	323,9	620	27	51	120

We reserve the rights to modify the production program and the given data without separate notices due to the permanent company development.