

**Resilient seated gate valve  
with electric actuator flanged DN700-DN1200**

**PN10  
PN16**

**SEWAGE**

**WATER**



Gate valve DN700

### Product description (standard execution):

- Body bonnet and wedge made of ductile cast iron EN-GJS 400-15
- Monolithic ISO top flange
- Full bore gate valve
- NBR/EPDM fully vulcanised wedge
- Application of low friction sliding element
- Wedge nut made of forged brass - replaceable
- Stainless steel spindle with rolled thread
- Low friction double spindle bearing acting both horizontal and vertical way
- O-ring spindle sealing packing cork protected against contact with medium
- Forged packing cork protected against unscrewing
- Body bonnet Zinc coated screws protected by wax
- Epoxy coating minimum 250 microns according to EN 14901
- Product according to EN 1074-1, EN 1074-2; EN 1171
- Flange connection according to EN 1092-2 (DIN 2501) pressure PN10; PN16
- Flange for drive assembly in accordance with ISO 5210
- Face to face according to EN 558-A1 F5 (DIN 3202) – catalogue number 2902
- Face to face according to EN 558-A1 F4 (DIN 3202) – catalogue number 2911
- Product marking according to EN 19; EN 1074

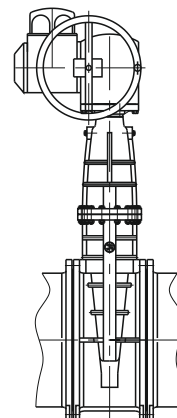
### Application:

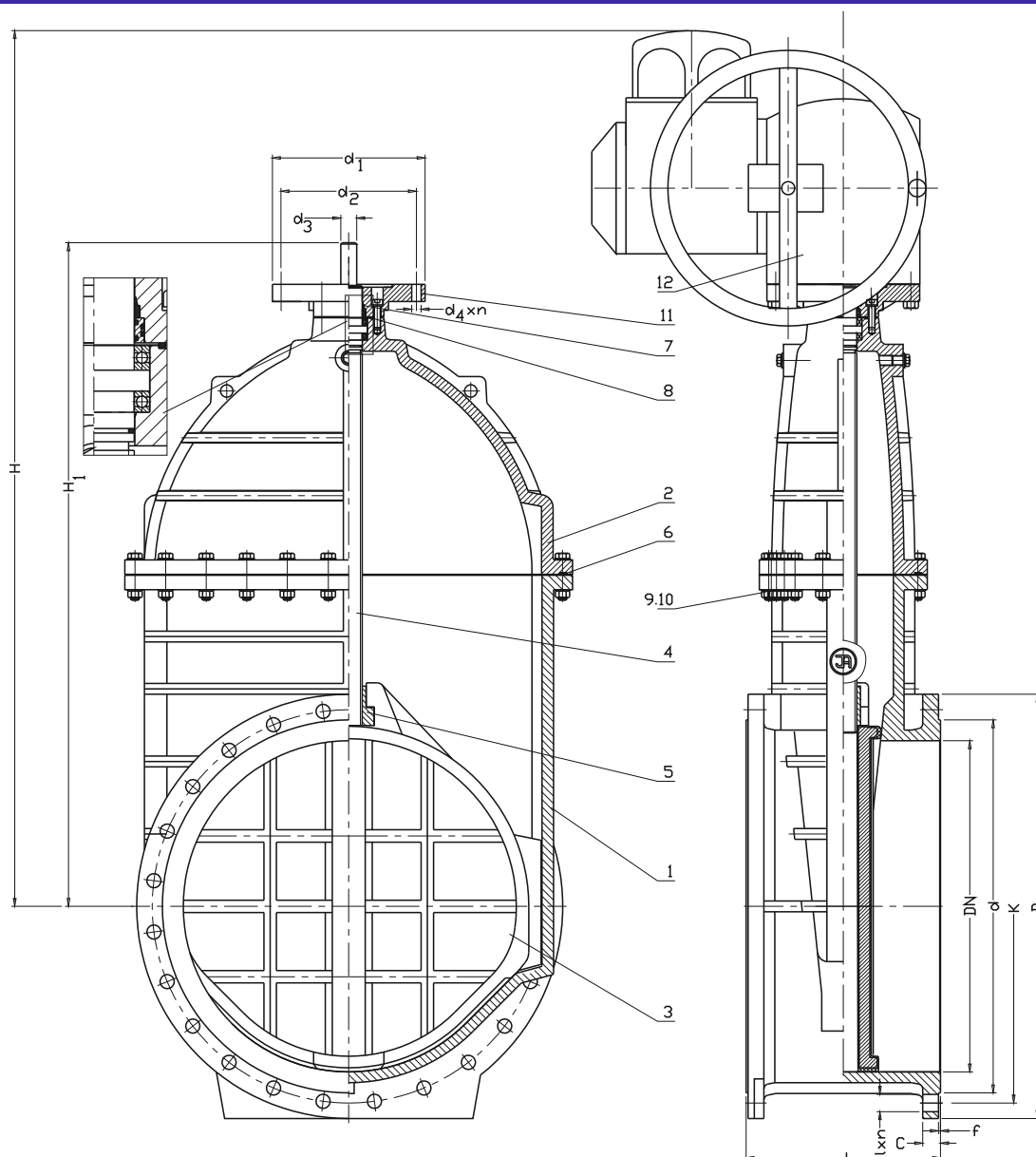
Water and sewage networks and tanks. Transport of non aggressive liquids.  
 Working conditions:  
 temp. up +70°C  
 pressure up to 1,6 MPa

### Test control:

Hydraulic test according to EN 1074-1; EN 1074-2; EN 12266-1  
 Seat: 1,1 x PN  
 Body: 1,5 x PN  
 Operation torque test.

### Installation:





No.	Part	Material	No.	Part	Material
1	Body	Ductile cast iron EN-GJS-400-15, EN-GJS-500-7 EN 1563	7, 8	O-ring	Rubber NBR, EPDM ISO 1629
2	Bonnet	Ductile cast iron EN-GJS-400-15, EN-GJS 500-7 EN 1563	9	Screw	Stainless steel A2 EN ISO 4017
3	Wedge	Ductile cast iron EN-GJS-400-15, EN-GJS 500-7 EN 1563 Rubber NBR, EPDM ISO 1629	10	Screw stopper Washer	Stainless steel A4 EN ISO 4032 Stainless steel A2 EN ISO 7091
4	Spindle	Steel 1.4021 EN 10088-1	11	Drive connector	Ductile cast iron EN-GJS-400-15, EN-GJS-500-7 EN 1563
5	Spindle nut	Brass CW617N EN 12165	12	Electric actuator	Catalogue producer
6	Cleaning gasket	Rubber NBR, EPDM ISO 1629			

DN	2911 L	2902 L	H	H1	d PN16	D PN16 (PN10)	K PN16 (PN10)	I PN16 (PN10)	C	f	n PN16 (PN10)	d1	d2	d3	d4xn	Turns for full open	Weight	
																	2911	2902
[mm]																	[kg]	
700	430	900	1790	1414	794	910 (895)	840	37 (31)	40	5	24	210	165	50	4xØ22	52	840	960
800	470	1000	1875	1588	901	1025 (1015)	950	40 (34)	43	5	24	210	165	50	4xØ22	52	1160	1320
900	510	1100	2130	1745	1001	1125 (1115)	1050	40 (34)	47	5	28	210	165	50	4xØ22	58	1560	2000
1000	550	1200	2280	1931	1112	1255 (1230)	1170 (1160)	43 (37)	50	5	28	300	254	50	8xØ18	65	3020	3600
1200	630	1400	2725	2375	1328	1485 (1455)	1390 (1380)	49 (41)	57	5	32	300	254	70	8xØ18	78	4600	5000

We reserve the rights to modify the production program and the given data without separate notices due to the permanent company development.