

**Resilient seated gate valve
with electric actuator flanged**

**PN10
PN16**

SEWAGE

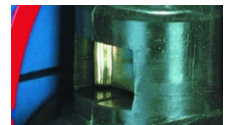
WATER



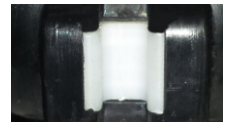
Gate valve DN80



Horizontal and vertical
double spindle bearing



Replaceable wedge nut



Application of low friction
sliding element

Product description (standard execution):

- Body bonnet and wedge made of ductile cast iron EN-GJS 400-15
- Monolithic ISO top flange
- Full bore gate valve
- NBR/EPDM fully vulcanised wedge
- Application of low friction sliding element
- Wedge nut made of forged brass - replaceable
- Stainless steel spindle with rolled thread
- Low friction double spindle bearing acting both horizontal and vertical way
- O-ring spindle sealing packing cork protected against contact with medium
- Forged packing cork protected against unscrewing
- Body bonnet Zinc coated screws protected by wax
- Epoxy coating minimum 250 microns according to EN 14901, GSK RAL certificate
- Product according to EN 1074-1, EN 1074-2; EN 1171
- Flange connection according to EN 1092-2 (DIN 2501) pressure PN10; PN16
- Flange for drive assembly in accordance with ISO 5210
- Face to face according to EN 558-A1 F5 (DIN 3202) – catalogue number 2902
- Face to face according to EN 558-A1 F4 (DIN 3202) – catalogue number 2911
- Product marking according to EN 19; EN 1074

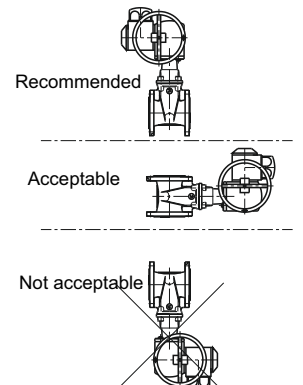
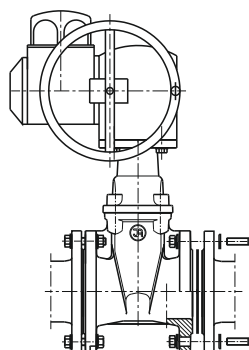
Application:

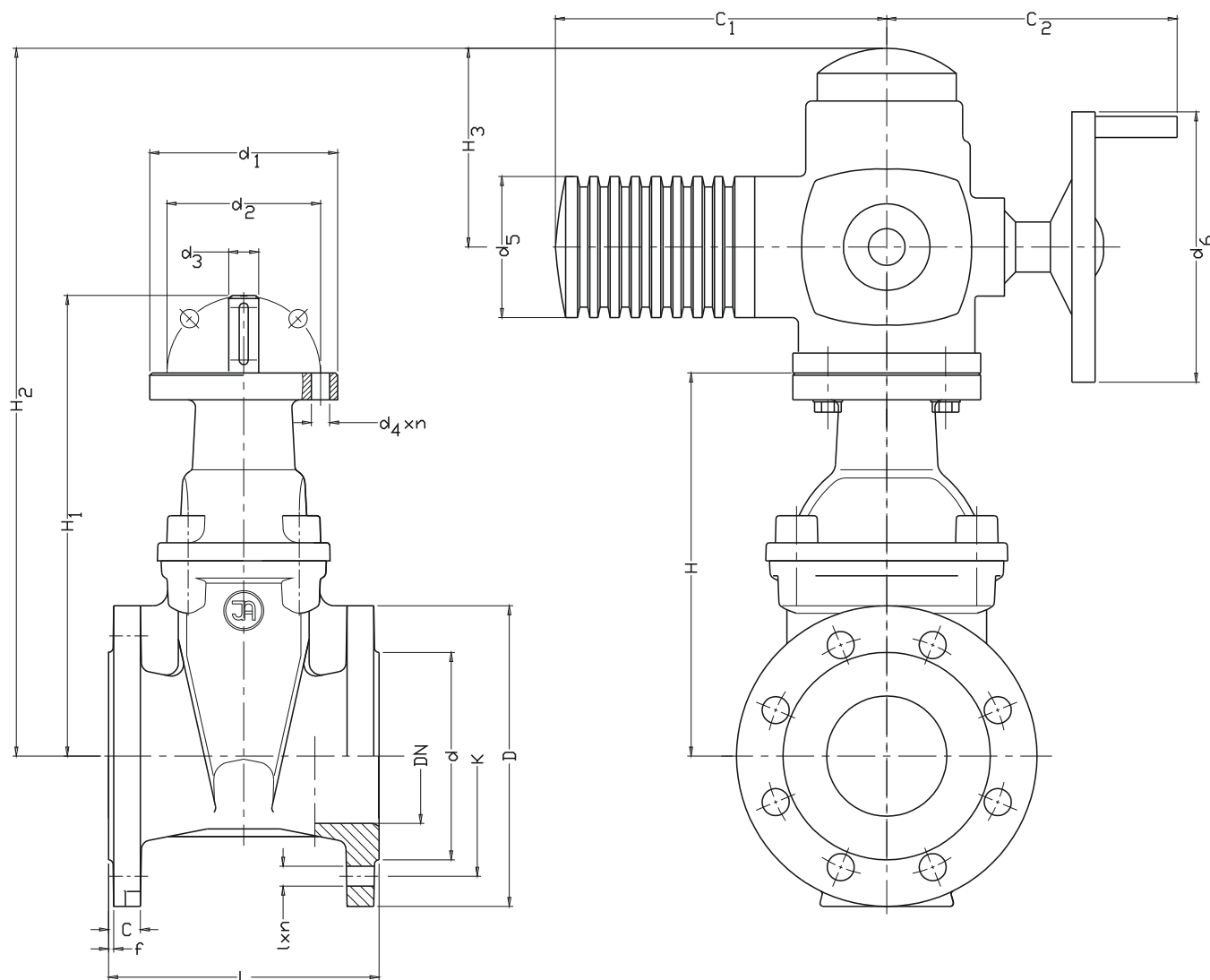
Water and sewage networks and tanks. Transport of non aggressive liquids.
Working conditions:
temp. up +70°C
pressure up to 1,6 MPa

Test control:

Hydraulic test according to EN 1074-1; EN 1074-2; EN 12266-1
Seat: 1,1 x PN
Body: 1,5 x PN
Operation torque test.

Installation:





DN	2911 L	2902 L	C	f	D	d	K	I	n	C ₁	C ₂	d ₁	d ₂	d ₃	d ₄ × n	d ₅	d ₆	H	H ₁	H ₂	H ₃	AUMA type of flange / Clamping force / number of turns	Weight 2911	Weight 2902		
PN16 (PN10)																										
[mm]										-	[mm]										Saxx.x-Fx / [Nm] / ---			[kg]		
40	140	240	19	3	150	84	110	19	4	265	250	90	70	16	9x4	105	160	188	238	461	170	SA 7.2-F7	10-30	11	34	37
50	150	250	19	3	165	99	125	19	4	265	250	90	70	16	9x4	105	160	198	248	471	170	SA 7.2-F7	10-30	13,5	35	38
65	170	270	19	3	185	118	145	19	4	282	256	125	102	20	11x4	125	200	232	283	507	170	SA 7.6-F10	20-60	14	49	52
80	180	280	19	3	200	132	160	19	8	282	256	125	102	20	11x4	125	200	255	307	530	170	SA 7.6-F10	20-60	17	50	54
100	190	300	19	3	220	156	180	19	8	282	256	125	102	20	11x4	125	200	290	346	565	170	SA 7.6-F10	20-60	21	56	59
125	200	325	19	3	250	184	210	19	8	282	256	125	102	20	11x4	125	200	329	385	604	170	SA 10.2-F10	40-120	26	72	80
150	210	350	19	3	285	211	240	23	8	282	256	125	102	20	11x4	125	200	400	457	675	170	SA 10.2-F10	40-120	26	82	89
200	230	400	20	3	340	266	295	23	12 (8)	282	256	125	102	20	11x4	125	200	475	538	750	170	SA 10.2-F10	40-120	34,5	103	118
250	250	450	22	3	405	319	355 (350)	28 (23)	12	385	325	175	140	30	18x4	153	315	560	625	875	180	SA 14.2-F14	100-250	42,5	153	167
300	270	500	25	4	460	370	410 (400)	28 (23)	12	385	325	175	140	30	18x4	153	315	635	700	950	180	SA 14.2-F14	100-250	51	181	208
350	290	550	27	4	520	429	470 (460)	28 (23)	16	385	325	175	140	30	18x4	153	315	720	785	1033	180	SA 14.6-F14	300-500	60	276	314

We reserve the rights to modify the production program and the given data without separate notices due to the permanent company development.