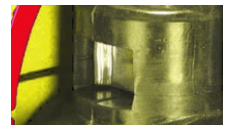


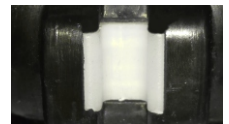
**Resilient seated gate valve for gas**  
 with electric actuator flanged

**PN10**  
**PN16**
**GAS**


Gate valve 2931 DN80


 Horizontal and vertical  
double spindle bearing


Replaceable wedge nut


 Application of low friction  
sliding element

**Product description (standard execution):**

- Body bonnet and wedge made of ductile cast iron EN-GJS 400-15
- Full bore gate valve
- NBR fully vulcanised wedge
- Application of low friction sliding element
- Wedge nut made of forged brass - replaceable
- Stainless steel spindle with rolled thread
- Low friction double spindle bearing acting both horizontal and vertical way
- O-ring spindle sealing, packing cork protected against contact with medium
- Forged packing cork protected against unscrewing
- Packing cork protected against dirt penetration
- Body bonnet Zinc coated screws protected by wax
- Epoxy coating minimum 250 microns according to EN 14901, GSK RAL certificate
- Product according to EN 13774
- Flange connection according to EN 1092-2 (DIN 2501), pressure PN10, PN16
- Flange for drive assembly in accordance with ISO 5210
- Face to face according to EN 558-A1 F5 (DIN 3202) – catalogue number 2932
- Face to face according to EN 558-A1 F4 (DIN 3202) – catalogue number 2931
- Product marking according to EN 19, EN 1171

**Application:**

Gas lines networks.  
 Working conditions:  
 temp. from -20°C up +60°C  
 pressure up to 1,6 MPa

**Execution variant:**

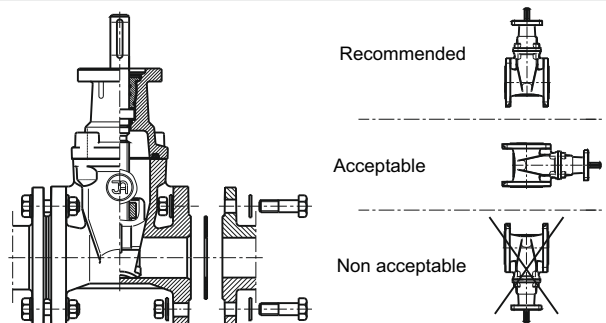
Ductile cast iron EN-GJS 350-22-LT (-30°C)  
 With SS body bonnet screws

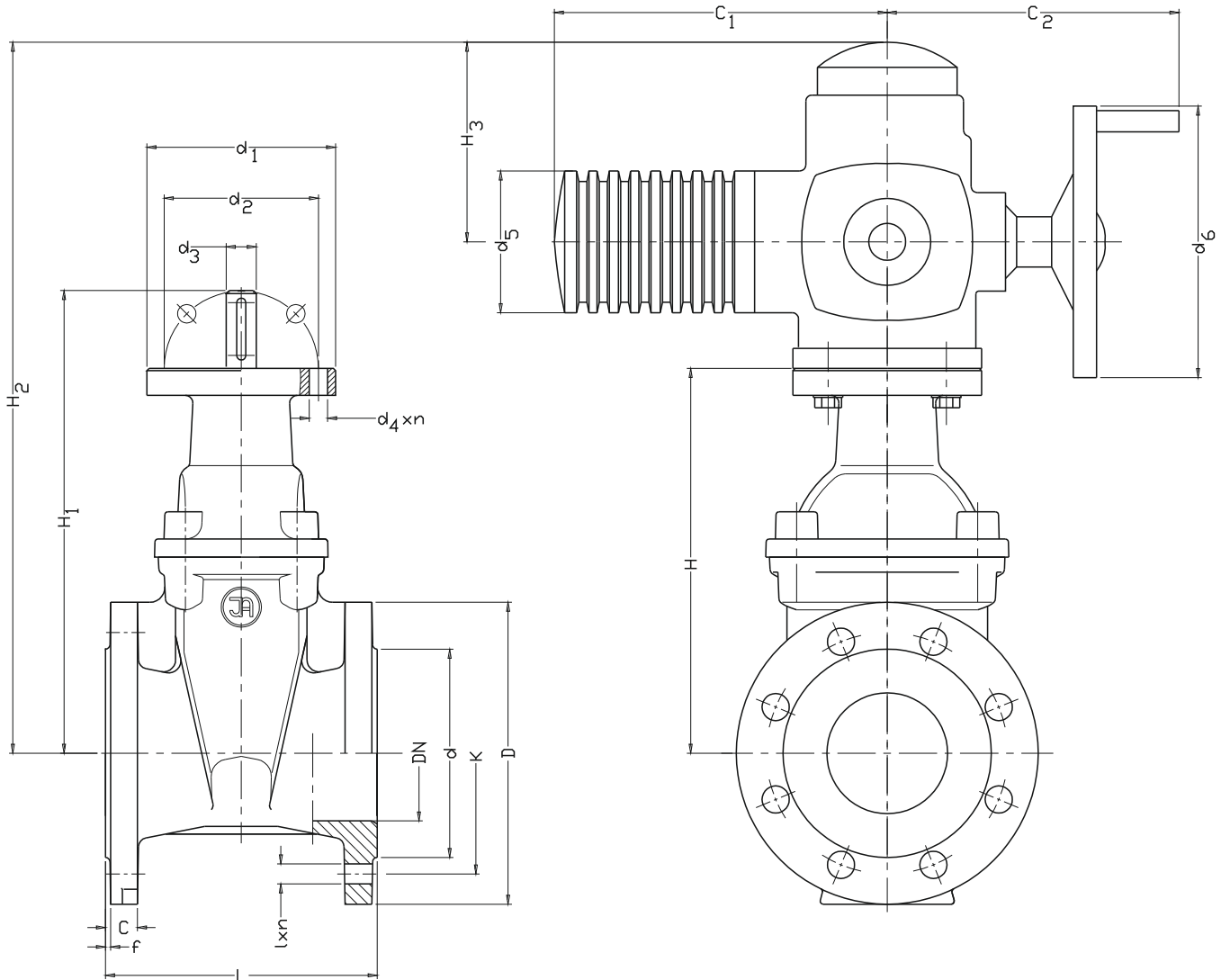
**Test control:**

Water pressure test according to EN 1074-1, EN 1074-2, EN 12266-1  
 Seat: 1,1 x PN;  
 Body: 1,5 x PN  
 Air pressure test according to EN 12266-1  
 Seat: 1,1 x PN;  
 Body: 1,1 x PN  
 Operation torque test.

**Accessories:**

Electric multi-turn explosion proof actuators - version EX  
 Pneumatic actuator

**Installation:**




DN	2931 L	2932 L	C	f	D	d	K	I	n	C <sub>1</sub>	C <sub>2</sub>	d <sub>1</sub>	d <sub>2</sub>	d <sub>3</sub>	d <sub>4</sub> x n	d <sub>5</sub>	d <sub>6</sub>	H	H <sub>1</sub>	H <sub>2</sub>	H <sub>3</sub>	AUMA top of flange / Clamping force / number of turns	Weight 2931	Weight 2932						
																									PN16 (PN10)					
[mm]																							[mm]			Saxx.x-Fx / [Nm] / ---			[kg]	
40	140	240	19	3	150	84	110	19	4	265	250	90	70	16	9x4	105	160	188	238	461	170	SA 7.2-F7	10-30	11	34	37				
50	150	250	19	3	165	99	125	19	4	265	250	90	70	16	9x4	105	160	198	248	471	170	SA 7.2-F7	10-30	13,5	35	38				
65	170	270	19	3	185	118	145	19	4	282	256	125	102	20	11x4	125	200	232	283	507	170	SA 7.6-F10	20-60	14	49	52				
80	180	280	19	3	200	132	160	19	8	282	256	125	102	20	11x4	125	200	255	307	530	170	SA 7.6-F10	20-60	17	50	54				
100	190	300	19	3	220	156	180	19	8	282	256	125	102	20	11x4	125	200	290	346	565	170	SA 7.6-F10	20-60	21	56	59				
125	200	325	19	3	250	184	210	19	8	282	256	125	102	20	11x4	125	200	329	385	604	170	SA 10.2-F10	40-120	26	72	80				
150	210	350	19	3	285	211	240	23	8	282	256	125	102	20	11x4	125	200	400	457	675	170	SA 10.2-F10	40-120	26	82	89				
200	230	400	20	3	340	266	295	23	12 (8)	282	256	125	102	20	11x4	125	200	475	538	750	170	SA 10.2-F10	40-120	34,5	103	118				
250	250	450	22	3	405	319	355 (350)	28 (23)	12	385	325	175	140	30	18x4	153	315	560	625	875	180	SA 14.2-F14	100-250	42,5	153	167				
300	270	500	25	4	460	370	410 (400)	28(23)	12	385	325	175	140	30	18x4	153	315	635	700	950	180	SA 14.2-F14	100-250	51	181	208				
350	290	550	27	4	520	429	470 (460)	28(23)	16	385	325	175	140	30	18x4	153	315	720	785	1033	180	SA 14.6-F14	300-500	60	276	314				

We reserve the rights to modify the production program and the given data without separate notices due to the permanent company development.