

**Clamp saddle**
**PN16**
**WATER**


Saddle 3050



Saddle 3100

### Product description (standard execution):

- Full bore
- Body made of ductile cast iron EN-GJS 400-15
- Gasket sealing between tube and saddle body
- Gasket positioner against wrong assembling
- Under pressure installation (shut valve and drilling machine required)
- Thread connection 2" according to EN ISO 228-1. Working pressure PN16 for DN50 (fig 3100)
- Flange connection according to EN 1092-2 (DIN 2501) pressure PN16 (fig 3050)
- Epoxy coating minimum 250 microns according to EN 14901 GSK RAL certificate
- Face to face according to the producer documentation JAFAR
- Product marking according to EN-19; EN-1074

### Application:

Water and sewage networks and tanks. Transport of non aggressive liquids.  
 Working conditions:  
 temp. up +70°C  
 pressure up to 1,6 MPa

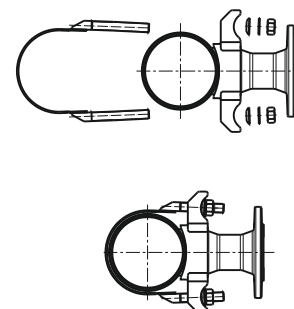
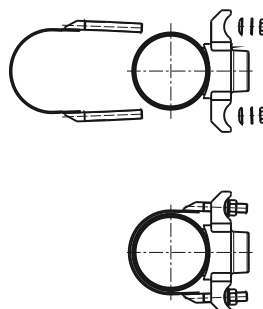
### Execution variant:

Ductile cast iron EN-GJS 500-7

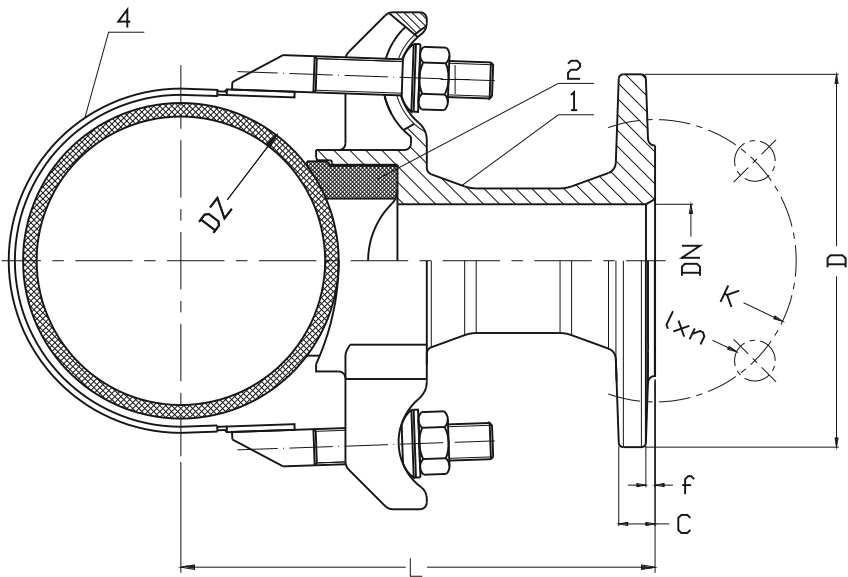
### Test control:

Water pressure test according to EN 1074-1; EN 1074-2;  
 EN 12266-1  
 Body: 1,5 x PN

### Installation:



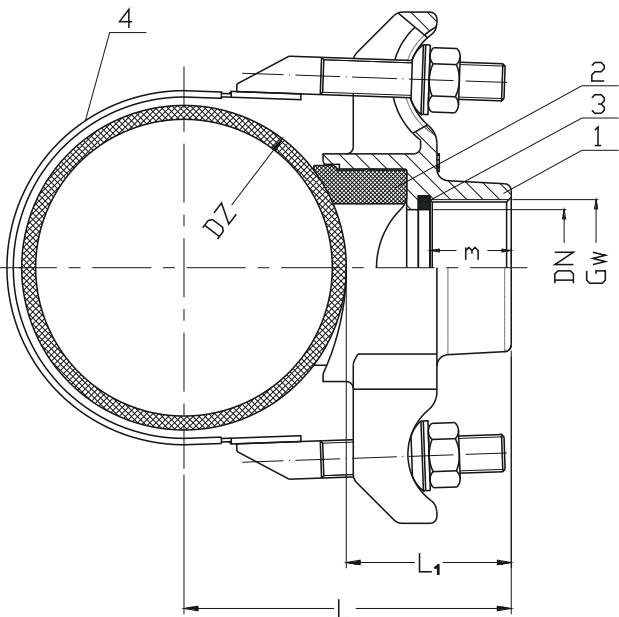
3050



No.	Part	Standard execution
3050, 3100		
1	Body	Ductile cast iron EN-GJS 400-15 EN 1560
2	Pipe gasket	Rubber EPDM EN-ISO 1629
3	Socket gasket	Rubber EPDM EN-ISO 1629
3330		
4*	Pipe strap	Stainless steel EN 10027-2 Rubber EPDM EN-ISO 1629
* - Equipment available, together or separately		

DN	K	Dz	D	l x n	L	C	f	Strap quantity
[mm]								[pcs]
50	125	88-738	165	19x4	140+Dz/2	16	3	1
80	160	125-700	200	19x8	135+Dz/2	17	3	2
100	180	150-500	220	19x8	135+Dz/2	17	3	2
100	180	500-800	220	19x8	135+Dz/2	17	3	2
150	240	300-500	300	23x8	135+Dz/2	19	3	3
150	240	500-900	300	23x8	135+Dz/2	19	3	3

3100



DN	Gw	Dz	L	L <sub>1</sub>	m	Strap quantity
[mm]	[cal]		[mm]			[pcs]
50	2"	88-738	L <sub>1</sub> +Dz/2	85	40	1