

**Connectors**  
for water line networks

**PN16**
**WATER**


Connectors 3150



Connectors 3160



Connectors 3151

**Product description (standard execution):**

- Body made of ductile cast iron EN-GJS 400-15
- Full bore
- Rubber gasket sealing between tube and connector body
- Fig 3150 (with 2 stainless steel screws) for PE and PVC pipes
- Fig 3160 (with 4 stainless steel screws) for PE and PVC pipes
- Article according to EN 1074-1, EN 1074-2
- Face to face according to the producer documentation JAFAR
- Thread connection 2" according to EN ISO 228-1. Working pressure PN10 and PN16
- Epoxy coating minimum 250 microns according to EN 14901 GSK RAL certificate
- Product marking according to EN 19; EN 1074

**Application:**

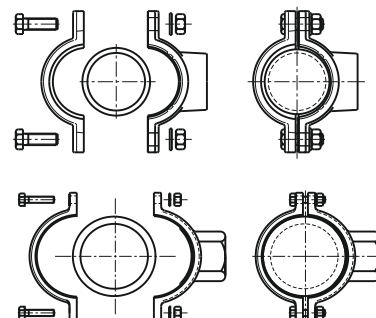
Water and sewage networks and tanks. Transport of non aggressive liquids.  
Working conditions:  
temp. up +70°C  
pressure up to 1,6 MPa

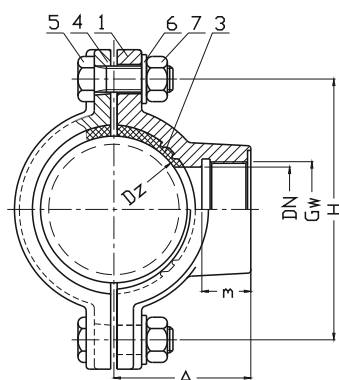
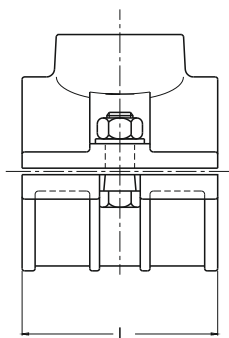
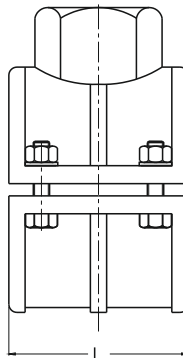
**Execution variant:**

Ductile cast iron EN-GJS 500-7  
Stainless steel screws

**Test control:**

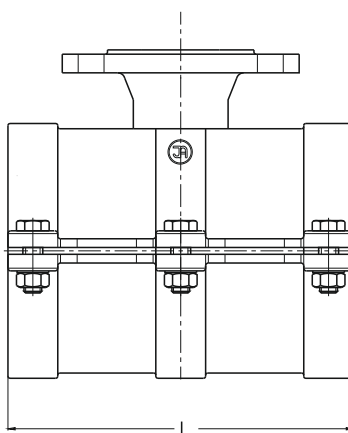
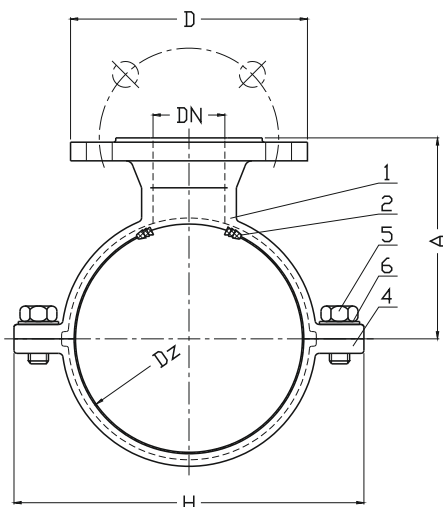
Water pressure test according to EN 1074-1; EN 1074-2;  
EN 12266-1  
Body: 1,5 x PN

**Installation:**



**3150**

**3160**


No.	Part	Standard execution
<b>3150, 3160, 3151</b>		
1	Body	Ductile cast iron EN-GJS 400-15 EN 1560
2,3	Seal the tube	Rubber EPDM EN-ISO 1629
4	Connectors	Ductile cast iron EN-GJS 400-15 EN 1560
5	Screw	Stainless steel A2 EN ISO 4014
6	Washer	Stainless steel A2 EN ISO 7091
7	Nut	Stainless steel A4 EN ISO 4032

DN	Gw	Dz	m	A	H	L	Quantity screw	Weight
[mm]	[cal]	[mm]					[pcs]	[kg]
3150								
50	2"	63	40	80	132	120	2	3,5
50	2"	90	40	94	160	120	2	4,4
50	2"	110	40	104	180	120	2	5,0
50	2"	160	40	132	225	120	2	6,8
50	2"	200	40	150	270	120	2	9,3
50	2"	225	40	162	300	120	2	10,4
3160								
50	2"	90	40	90	138	100	4	2,6
50	2"	110	40	100	163	110	4	3,3
50	2"	125	40	112	176	110	4	4,1
50	2"	160	40	129	204	128	4	4,7
50	2"	180	40	142	230	128	4	5,2
50	2"	225	40	151	280	180	6	9,0
50	2"	250	40	163	320	180	6	9,8
50	2"	280	40	178	340	180	6	10,6
50	2"	315	40	196	370	180	6	16,7

**3151**


DN	Dz	H	A	D	L
[mm]					
<b>3151</b>					
50	63	129	140	165	90
50	75	141	140	165	115
50	90	161	145	165	180
50	110	189	145	165	200
80	110	189	170	200	200
50	125	204	160	165	200
80	125	204	170	200	200
50	140	219	160	165	200
80	140	219	170	200	200
100	140	219	180	220	200
50	160	239	170	165	250
80	160	239	200	200	250
100	160	239	205	220	250
50	180	259	195	165	250
80	180	259	225	200	250
100	180	259	230	220	250
50	200	279	195	165	250
80	200	279	225	200	250
100	200	279	230	220	250
80	225	304	225	200	250
100	225	304	230	220	250
50	250	345	250	165	300
80	250	345	250	200	300
100	250	345	255	220	300
150	250	345	265	285	300
50	280	376	260	165	300
80	280	376	265	200	300
100	280	376	270	220	300
150	280	376	280	285	300
50	315	411	290	165	300
80	315	411	295	200	300
100	315	411	300	220	300
150	315	411	310	285	300
50	400	496	340	165	300
80	400	496	350	200	300
100	400	496	360	220	300
150	400	496	370	285	300