

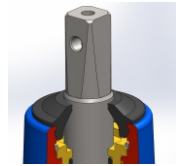
Connector set
for soft pipes PE and PVC

PN10
PN16

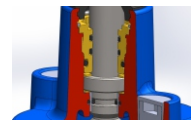
WATER



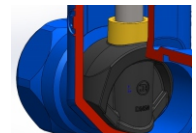
Connector set DN50



Packing cork protected against unscrewing and fully covered by additional cleaning gasket



Horizontal and vertical double spindle bearing



The wedge is made entirely of vulcanized brass

Product description (standard execution):

- Body bonnet and wedge made of ductile cast iron
- Full bore gate valve
- Wedge made of brass EN 1412, vulcanized with rubber
- Stainless steel spindle with rolled thread and integrated spindle collar
- Low friction double spindle bearing both horizontal and vertical way
- O-ring seal area for plug o-ring seal
- Sealing plug made of pressed brass secured with a special lock
- Packing cork protected against dirt penetration
- Clamp made of nodular cast iron
- Fully rubber lined clamp halves
- Body bonnet Zinc coated screws protected by wax
- Epoxy coating minimum 250 microns according to EN 14901 GSK RAL certificate
- Article according to EN 1074-1, EN 1074-2
- Threaded connection according to EN ISO 228-1 pressure PN10; Pn16
- Face to face according to producer documentation JAFAR
- Product marking according to EN 19; EN 1074

Application:

Water and sewage networks and tanks. Transport of non aggressive liquids.
Working conditions:
temp. up +70°C
pressure up to 1,6 MPa

Test control:

Water pressure test according to EN 1074-1; EN 1074- 2; EN 12266-1
Seat 1,1 x PN
Body 1,5 x PN
Operation torque test

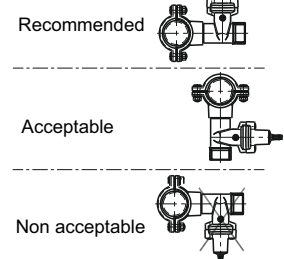
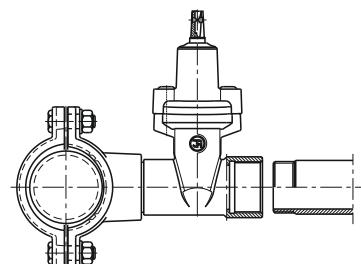
Accessories:

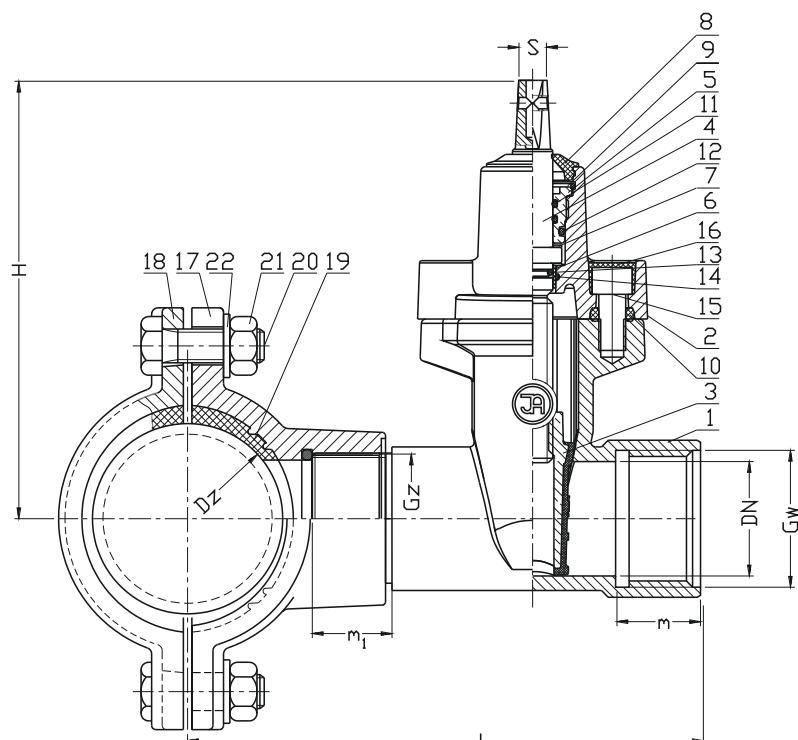
Extension spindle - see: 9010, 9011
Street box - see: 9501, 9503, 9504, 9509

Execution variant:

Ductile cast iron EN-GJS 500-7
Connecting screws made of stainless steel
NBR seal

Installation:





| DN | Gw/Gz | Dz | L | m | m ₁ | H | S | Quantity screw | Weight |
|----------|-------------------|-----|-----------|------|----------------|-----|----|----------------|-----------|
| [mm] | [cal] | | 3150/3160 | [mm] | | | | [szt] | [kg] |
| 25 32 | 1 1/2" 5/4"/2" | 63 | 180 | 25 | 40 | 160 | 12 | 2 | 6,2 |
| | | 90 | 194/197 | 25 | 40 | 160 | 12 | 2/4 | 7,1/5,3 |
| | | 110 | 204/205 | 25 | 40 | 160 | 12 | 2/4 | 7,7/6 |
| | | 125 | 212/222 | 25 | 40 | 160 | 12 | 2/4 | 8,5/8 |
| | | 160 | 232/231 | 25 | 40 | 160 | 12 | 2/4 | 9,5/7,4 |
| | | 180 | 251 | 25 | 40 | 160 | 12 | 4 | 7,9 |
| | | 200 | 255 | 25 | 40 | 160 | 12 | 2 | 12 |
| | | 225 | 264 | 25 | 40 | 160 | 12 | 2 | 13,1 |
| | | 250 | 273 | 25 | 40 | 160 | 12 | 2 | 16,2 |
| | | 280 | 288 | 25 | 40 | 160 | 12 | 2 | 17 |
| | | 315 | 306 | 25 | 40 | 160 | 12 | 2 | 19 |
| 40 | 6/4"/2" | 63 | 200 | 40 | 40 | 195 | 12 | 2 | 7 |
| | | 90 | 214/217 | 40 | 40 | 195 | 12 | 2/4 | 7,9/6,1 |
| | | 110 | 224/225 | 40 | 40 | 195 | 12 | 2/4 | 8,5/6,8 |
| | | 125 | 232/242 | 40 | 40 | 195 | 12 | 2/4 | 8 |
| | | 160 | 250 | 40 | 40 | 195 | 12 | 2/4 | 10,3/8,2 |
| | | 180 | 270 | 40 | 40 | 195 | 12 | 4 | 9 |
| | | 200 | 275 | 40 | 40 | 195 | 12 | 2 | 13 |
| | | 225 | 285 | 40 | 40 | 195 | 12 | 2 | 13,9/12,5 |
| | | 250 | 295 | 40 | 40 | 195 | 12 | 2 | 13 |
| | | 280 | 305 | 40 | 40 | 195 | 12 | 2 | 14 |
| | | 315 | 325 | 40 | 40 | 195 | 12 | 2 | 20 |
| 50 | 2"/2" | 63 | 205 | 40 | 40 | 200 | 12 | 2 | 8 |
| | | 90 | 219/222 | 40 | 40 | 200 | 12 | 2/4 | 8,9/7,1 |
| | | 110 | 229/230 | 40 | 40 | 200 | 12 | 2/4 | 9,5/7,8 |
| | | 125 | 237/247 | 40 | 40 | 200 | 12 | 2/4 | 9 |
| | | 160 | 256 | 40 | 40 | 200 | 12 | 2/4 | 11,3/9,2 |
| | | 180 | 275 | 40 | 40 | 200 | 12 | 4 | 10 |
| | | 200 | 280 | 40 | 40 | 200 | 12 | 2 | 14 |
| | | 225 | 290 | 40 | 40 | 200 | 12 | 2 | 14,9/13,5 |
| | | 250 | 300 | 40 | 40 | 200 | 12 | 2 | 14 |
| | | 280 | 310 | 40 | 40 | 200 | 12 | 2 | 15 |
| | | 315 | 330 | 40 | 40 | 200 | 12 | 2 | 21 |

| No. | Part | Standard execution |
|--|--------------------|--|
| 1 | Body | Ductile cast iron EN-GJS 400-15 EN-GJS 500-7(*) EN 1560 |
| 2 | Disc | Ductile cast iron EN-GJS 400-15 EN-GJS 500-7(*) EN 1560 |
| 3 | Wedge | Brass CW617N EN 1412 Rubber EPDM, NBR(*) EN ISO 1629 |
| 4 | Spindle | Stainless steel 1,4021 EN 10027-2 |
| 5 | Packing cork | Brass CW617N EN 1412 |
| 6 | Spindle sleeve | Poliacetal POM-K EN ISO 29988-1 |
| 7 | Spindle nut | Poliacetal POM-K EN ISO 29988-1 |
| 8 | Cleaning gasket | Rubber EPDM, NBR(*) EN ISO 1629 |
| 9 | Protection ring | Stainless steel 1,4310 EN 10027-2 |
| 10 | Body-bonnet gasket | Rubber EPDM, NBR(*) EN ISO 1629 |
| 11 14 | O-ring | Rubber EPDM, NBR(*) EN ISO 1629 |
| 15 | Screw | Steel Fe/Zn5, Stainless steel A2 EN ISO 4762 |
| 16 | Srew stopper | Wax |
| 17 | Clamp body | Ductile cast iron EN-GJS 400-15 EN-GJS 500-7(*) EN 1560 |
| 18 | Clamp | Ductile cast iron EN-GJS 400-15 EN-GJS 500-7(*) EN 1560 |
| 19 | Seal the tube | Wax |
| 20 | Screw | Stainless steel A2 EN ISO 4017 |
| 21 | Nut | Stainless steel A4 EN ISO 4032 |
| 22 | Washer | Stainless steel A2 EN ISO 7091 |
| (*) - other material variants on special request | | |