

Connector set
for soft pipes PE and PVC

PN10
PN16

WATER



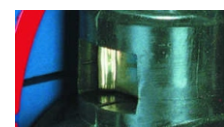
Connector set DN50



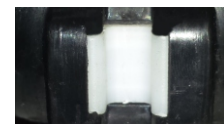
Packing cork protected against unscrewing and fully covered by additional cleaning gasket



Horizontal and vertical double spindle bearing



Replaceable wedge nut



Application of low friction sliding element

Product description (standard execution):

- Body bonnet and wedge made of ductile cast iron EN-GJS 400-15
- Full bore gate valve
- NBR/EPDM fully vulcanised wedge; DN25 and DN32 made of brass EN 1412
- Application of low friction sliding element for DN40-DN50
- Wedge nut made of forged brass - replaceable for DN40-DN50
- Stainless steel spindle with rolled thread
- Low friction double spindle bearing acting both horizontal and vertical way
- O-ring spindle sealing packing cork protected against contact with medium
- Under pressure replaceable packing cork for DN40-DN50
- Forged packing cork protected against unscrewing
- Packing cork protected against dirt penetration
- Rubber gasket sealing between tube and connector body
- Body bonnet Zinc coated screws protected by wax
- Epoxy coating minimum 250 microns according to EN 14901 GSK RAL certificate
- Article according to EN 1074-1, EN 1074-2
- Threaded connection according to EN 10226-1; pressure PN10 and PN16
- Face to face according to producer documentation JAFAR
- Product marking according to: EN 19; EN 1074

Application:

Water and sewage networks and tanks. Transport of non aggressive liquids.
Working conditions:
temp. up +70°C
pressure up to 1,6 MPa

Execution variant:

Ductile cast iron EN-GJS 500-7
Connecting screws made of stainless steel

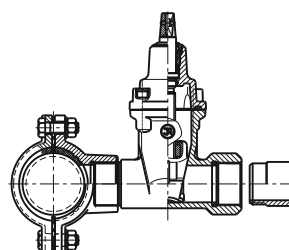
Test control:

Water pressure test according to EN 1074-1; EN 1074- 2; EN 12266-1
Seat 1,1 x PN
Body 1,5 x PN
Operation torque test

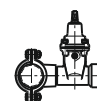
Accessories:

Extension spindle - see: 9010, 9011
Street box - see: 9501, 9503, 9504, 9509

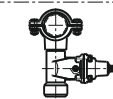
Installation:



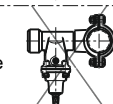
Recommended

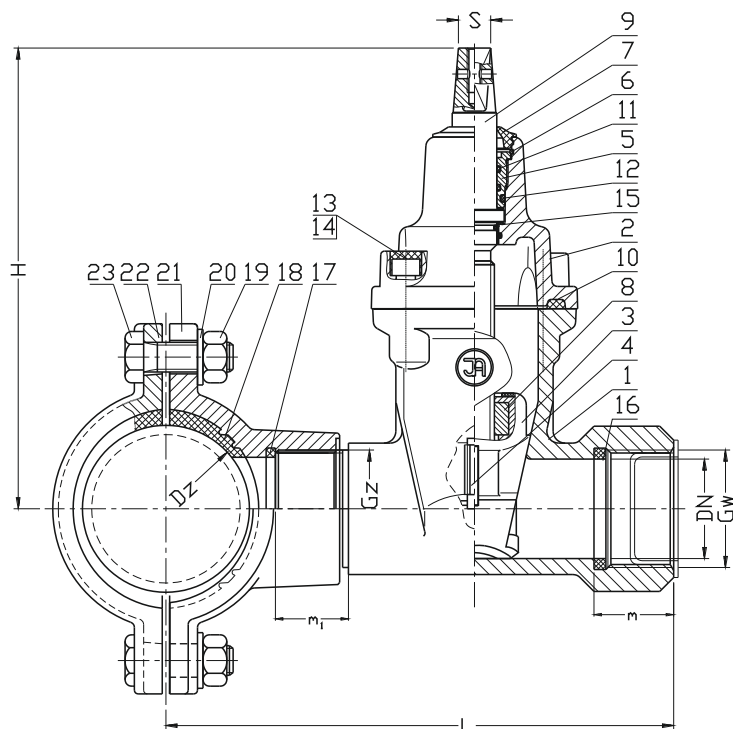


Acceptable



Non acceptable





DN	Gw/Gz	Dz	L	m	m ₁	H	S	Quantity screw	Weight
[mm]	[cal]		3150/3160	[mm]				[pcs]	[kg]
25 32	1"/2" 5/4"/2"	63	180	25	40	160	12	2	6,2
		90	194/197	25	40	160	12	2/4	7,1/5,3
		110	204/205	25	40	160	12	2/4	7,7/6
		125	212/222	25	40	160	12	2/4	8,5/8
		160	232/231	25	40	160	12	2/4	9,5/7,4
		180	251	25	40	160	12	4	7,9
		200	255	25	40	160	12	2	12
		225	264	25	40	160	12	2	13,1
		250	273	25	40	160	12	2	16,2
		280	288	25	40	160	12	2	16,9
		315	306	25	40	160	12	2	19,4
40	6/4"/2"	63	215	40	40	215	14	2	9,3
		90	229/232	40	40	215	14	2/4	10,2/8,4
		110	239/240	40	40	215	14	2/4	10,8/9,1
		125	247/257	40	40	215	14	2/4	11,6/9,9
		160	267/266	40	40	215	14	2/4	12,6/10,5
		180	286	40	40	215	14	4	11
		200	290	40	40	215	14	2	15,1
		225	299	40	40	215	14	2	16,2
		250	308	40	40	215	14	2	19,3
		280	321	40	40	215	14	2	20
		315	341	40	40	215	14	2	22,5
50	2"/2"	63	235	40	40	225	14	2	10
		90	249/252	40	40	225	14	2/4	11/9,2
		110	259/260	40	40	225	14	2/4	11,6/9,9
		125	267/277	40	40	225	14	2/4	12,4/10,7
		160	287/286	40	40	225	14	2/4	13,4/11,3
		180	306	40	40	225	14	4	11,8
		200	310	40	40	225	14	2	15,6
		225	319	40	40	225	14	2	17
		250	328	40	40	225	14	2	20,1
		280	341	40	40	225	14	2	20,8
		315	361	40	40	225	14	2	23,3

No	Part	Standard execution
1	Body	Ductile cast iron EN-GJS 400-15 EN-GJS 500-7(*) EN 1560
2	Disc	Ductile cast iron EN-GJS 400-15 EN-GJS 500-7(*) EN 1560
3	Wedge	Brass CW617N(DN25-DN32) EN 1412 Ductile cast iron (DN40-DN50) EN-GJS 400-15 EN-GJS 500-7(*) EN 1560 Rubber EPDM, NBR(*) EN ISO 1629
4	Wedge slider	Poliacetal POM-K EN ISO 29988-1
5	Packing cork	Brass CW617N EN 1412
6	Protection ring	Steel 1.4310 EN 10027-2
7	Cleaning gasket	Rubber EPDM, NBR(*) EN ISO 1629
8	Spindle nut	Brass CW617N EN 1412
9	Spindle	Stainless steel 1,4021 EN 10027-2
10	Body-bonnet gasket	Rubber EPDM, NBR(*) EN ISO 1629
11 12	O-ring	Rubber EPDM, NBR(*) EN ISO 1629
13	Screw	Steel Fe/Zn5 Stainless steel A2 EN ISO 4762
14	Screw stopper	Wax
15	Washer	Poliacetal POM-K EN ISO 29988-1
16 18	Seal the tube	Rubber EPDM, NBR(*) EN ISO 1629
20	Screw	Stainless steel A2 EN ISO 4017
19	Nut	Stainless steel A4 EN ISO 4032
20	Washer	Stainless steel A2 EN ISO 7091
21	Footing	Ductile cast iron EN-GJS 400-15 EN 1560
22	Connectors	Ductile cast iron EN-GJS 400-15 EN 1560
23	Screw	Stainless steel A2 EN ISO 4017
(*) - other material variants on special request		