

Connector set for hard pipes

PN10
PN16

WATER



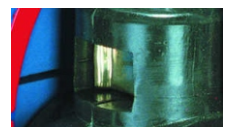
Connector set DN50



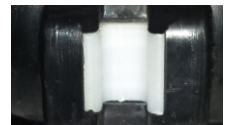
Packing cork protected against unscrewing and fully covered by additional cleaning gasket



Horizontal and vertical double spindle bearing



Replaceable wedge nut



Application of low friction sliding element

Product description (standard execution):

- Body bonnet and wedge made of ductile cast iron EN-GJS 400-15
- Full bore gate valve
- NBR/EPDM fully vulcanised wedge DN32 made of brass EN 1412
- Application of low friction sliding element for DN40-DN50
- Wedge nut made of forged brass - replaceable for DN40-DN50
- Stainless steel spindle with rolled thread
- Low friction double spindle bearing acting both horizontal and vertical way
- O-ring spindle sealing packing cork protected against contact with medium
- Under pressure replaceable packing cork(DN40 and DN50)
- Forged packing cork protected against unscrewing
- Packing cork protected against dirt penetration
- Rubber gasket sealing between tube and connector body
- Body bonnet Zinc coated screws protected by wax
- Easy clamp assembling with the connector jaw
- Gasket positioner against wrong assembling
- Acid resistant steel pipe strap
- Stainless steel clamp screws
- Epoxy coating minimum 250 microns according to EN 14901 GSK RAL certificate
- Article according to EN 1074-1, EN 1074-2
- Face to face according to producer documentation JAFAR
- Product marking according to: EN 19; EN 1074

Application:

Water and sewage networks and tanks. Transport of non aggressive liquids.
Working conditions:
temp. up +70°C
pressure up to 1,6 MPa

Execution variant:

Ductile cast iron EN-GJS 500-7
Connecting screws made of stainless steel

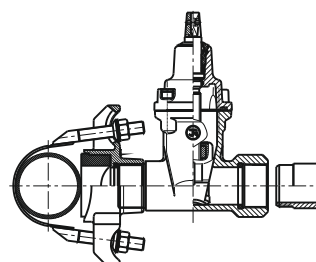
Test control:

Water pressure test according to EN 1074-1; EN 1074- 2; EN 12266-1
Seat 1,1 x PN
Body 1,5 x PN
Operation torque test

Accessories:

Extension spindle - see: 9010, 9011
Street box - see: 9501, 9503, 9504, 9509

Installation:



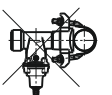
Recommended

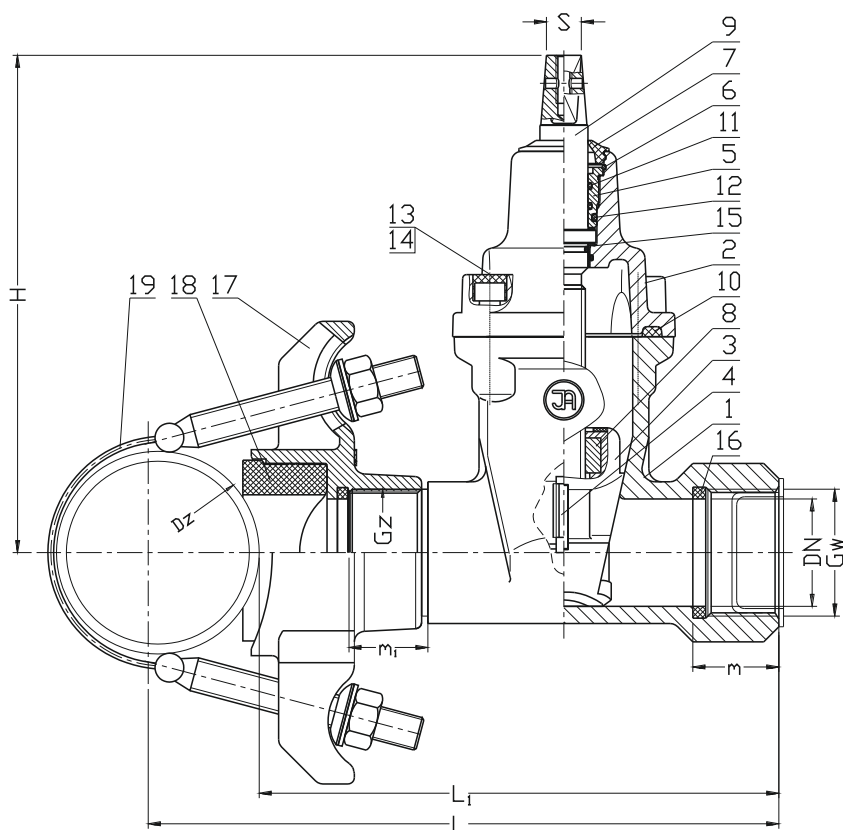


Acceptable



Non acceptable





No.	Part	Standard execution
1	Body	Ductile cast iron EN-GJS 400-15 EN-GJS 500-7(*) EN 1560
2	Disc	Ductile cast iron EN-GJS 400-15 EN-GJS 500-7(*) EN 1560
3	Wedge	Brass CW617N DN32 EN 1412 Ductile cast iron DN40-DN50 EN-GJS 400-15 EN-GJS 500-7(*) EN 1560 Rubber EPDM, NBR(*) EN ISO 1629
4	Wedge slider	Poliacetal POM-K EN ISO 29988-1
5	Packing cork	Brass CW617N EN 1412
6	Protection ring	Steel 1.4310 EN 10027-2
7	Cleaning gasket	Rubber EPDM, NBR(*) EN ISO 1629
8	Spindle nut	Brass CW617N EN 1412
9	Spindle	Steel 1.4021 EN 10027-2
10	Body-bonnet gasket	Rubber EPDM, NBR(*) EN ISO 1629
11	O-ring	Rubber EPDM, NBR(*) EN ISO 1629
13	Screw	Steel Fe/Zn5, Stainless steel A2 EN ISO 4762
14	Srew stopper	Wax
15	Washer	Poliacetal POM-K EN ISO 29988-1
16	Seal the tube	Rubber EPDM, NBR(*) EN ISO 1629
17	Clamb saddle	Ductile cast iron EN-GJS 400-15 EN-GJS 500-7(*) EN 1560
19	Pipe strap TYP 3330	Stainless steel EN 10027-2 Rubber EPDM, NBR(*) EN ISO 1629
(*) - other material variants on special request		

DN	Gw/Gz	Dz	L	L ₁	m	m ₁	H	S	Weight
[mm]	[cal]		[mm]						[kg]
32	5/4"/5/4"	88-738	L ₁ +Dz/2	165	25	40	160	12	6,8
32	5/4"/2"	88-738	L ₁ +Dz/2	175	25	40	160	12	6,9
40	6/4"/6/4"	88-738	L ₁ +Dz/2	225	40	40	215	14	10,5
40	6/4"/2"	88-738	L ₁ +Dz/2	225	40	40	215	14	10,6
50	2"/2"	88-738	L ₁ +Dz/2	245	40	40	225	14	11,7