

Tapping saddle-gate valve for PE and PVC pipes

PN10
PN16

WATER



Tapping saddle DN50

- Can be used for drilling without using appliance
- Can be drilled under pressure
- Tight flow shut-off

Product description (standard execution):

- Body bonnet and wedge made of ductile cast iron EN-GJS 400-15
- Head protected against unscrewing
- Drill diameter 38 mm
- Elongated drilling knife made of stainless steel
- O-ring spindle sealing, packing cork protected against contact with medium
- Connection diameter 5/4" or 2"
- External diameter of PVC, PE HD80, PE HD100 and PE HD100RC pipes: 63, 90, 110, 125, 140, 160, 200, 225,
- EPDM fully covered clamp
- Body-clamp stainless steel screws
- Clean gasket protecting packing cork against dirt penetration from outside
- Epoxy coating minimum 250 microns according to EN 14901
- Article according to EN 1074-1, EN 1074-2, EN 1171
- Face to face according to producer documentation JAFAR
- Product marking according to: EN 19, EN 1074

Application:

Water and sewage networks and tanks. Transport of non aggressive liquids.
Working conditions:
temp. up +70°C
pressure up to 1,6 MPa

Execution variant:

Ductile cast iron EN-GJS 500-7

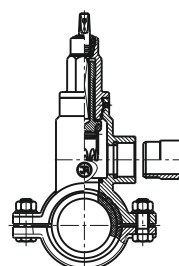
Test control:

Water pressure test according to EN 1074-1; EN 1074- 2; EN 12266-1
Seat 1,1 x PN
Body 1,5 x PN
Operation torque test

Accessories:

Extension spindle - see: 9010, 9011
Street box - see: 9501, 9503, 9504, 9509

Installation:



Recommended

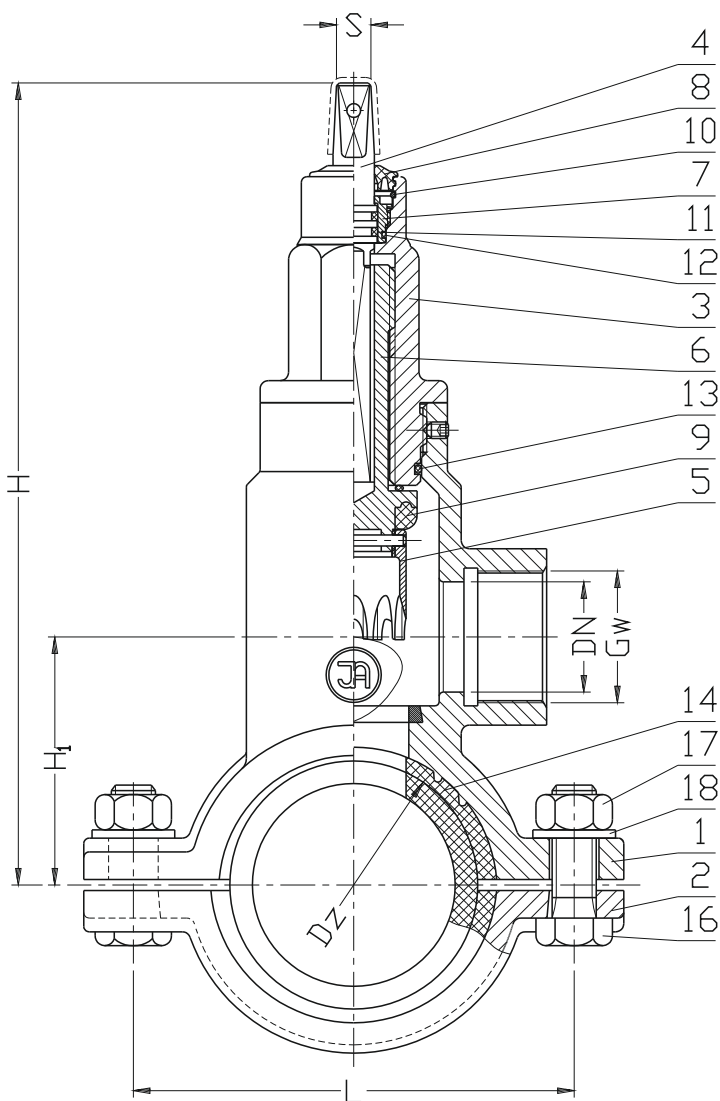


Acceptable



Non acceptable





No.	Part	Standard execution
1	Body	Ductile cast iron EN-GJS 400-15 EN 1560
2	Disc	Ductile cast iron EN-GJS 400-15 EN 1560
3	Cap	Ductile cast iron EN-GJS 400-15 EN 1560
4	Spindle	Stainless steel 1.4021 EN 10027-2
5	Knife	Stainless steel 1.4541 EN 10027-2
6	Coupler	Brass CW617N EN 1412
7	Packing cork	Brass CW617N EN 1412
8	Cleaning gasket	Rubber EPDM EN ISO 1629
9	Gasket	Rubber EPDM EN ISO 1629
10	Protection ring	Steel 1.4310 EN 10027-2
11 13	O-ring	Rubber EPDM EN ISO 1629
14 15	Seal the tube	Rubber EPDM EN ISO 1629
16	Screw	Stainless steel A2 EN ISO 4017
17	Nut	Stainless steel A4 EN ISO 4032
18	Washer	Stainless steel A2 EN ISO 7091

DN	Gw	Dz	H _i	H	L	S	Weight
32	5/4"	63	77	280	132	12	6,4
32	5/4"	90	90	293	160	12	7,9
32	5/4"	110	100	303	180	12	8,2
32	5/4"	125	112	315	200	12	8,5
32	5/4"	140	116	320	205	12	8,7
32	5/4"	160	126	330	225	12	10,2
32	5/4"	200	145	348	274	12	12,5
32	5/4"	225	158	360	300	12	13,6
50	2"	63	77	280	132	12	6,8
50	2"	90	90	293	160	12	7,9
50	2"	110	100	303	180	12	8,3
50	2"	125	112	315	200	12	8,8
50	2"	140	116	320	205	12	9,3
50	2"	160	126	330	225	12	10,1
50	2"	200	145	348	274	12	12,5
50	2"	225	158	360	300	12	13,3

We reserve the rights to modify the production program and the given data without separate notices due to the permanent company development.