

**Centric butterfly valve for gas
wafer type**

**PN10
PN16**

GAS



Centric butterfly valve DN65

Product description (standard execution):

- Body made of ductile cast iron EN-GJS 400-15
- Centric disc made of stainless steel 1.4401
- NBR replaceable loose liner protected against axial displacement
- Stainless steel 1.4021 solid spline (not pinned) shaft with the bottom side seated in blind hole of the body
- Three-slide bearings
- Special shaped loose liner to seal with the shaft crossing
- O-ring's additional shaft sealing NBR
- For DN350 splined connection from DN400 with pin connections
- Actuator connector according to ISO 5211 (ISO top flange)
- Epoxy coating to EN 14901
- Product according to EN 13774; EN 1074-1; EN 1074-2; EN-593
- End connection according to EN 1092-2 (DIN 2501), pressure PN10, PN16
- Face to face according to EN 558-A1 row 20 (DIN 3202)
- Product marking according to : EN 19, EN 1171

Application:

Gas lines and networks:natural gas-biogas
Working conditions:
temp. range -20°C to +70°C
pressure up to 1.6 MPa.

Execution variant:

With lever up to DN200,
With gear from DN400

Test control:

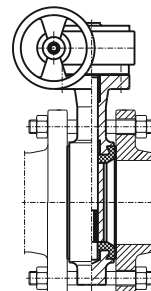
Water pressure test according to EN 1074-1, EN 1074- 2, EN 12266-1
Seat: 1,1 x PN;
Body: 1,5 x PN
Air pressure test according to EN 12266-1
Seat: 1,1 x PN;
Body: 1,1 x PN
Operation torque test

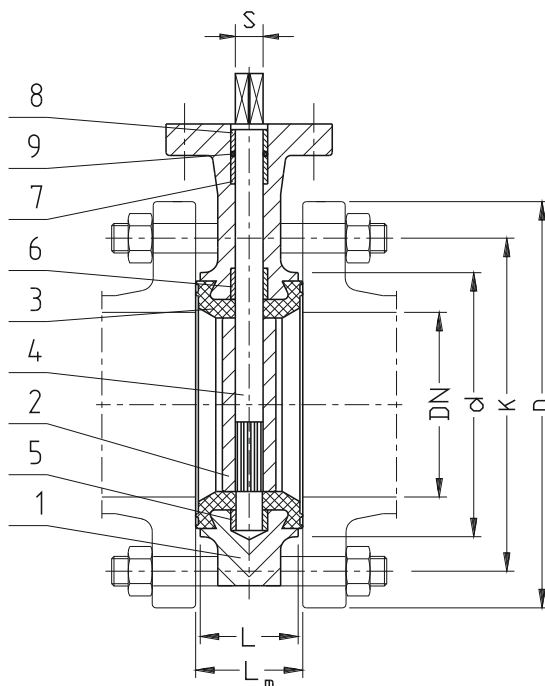
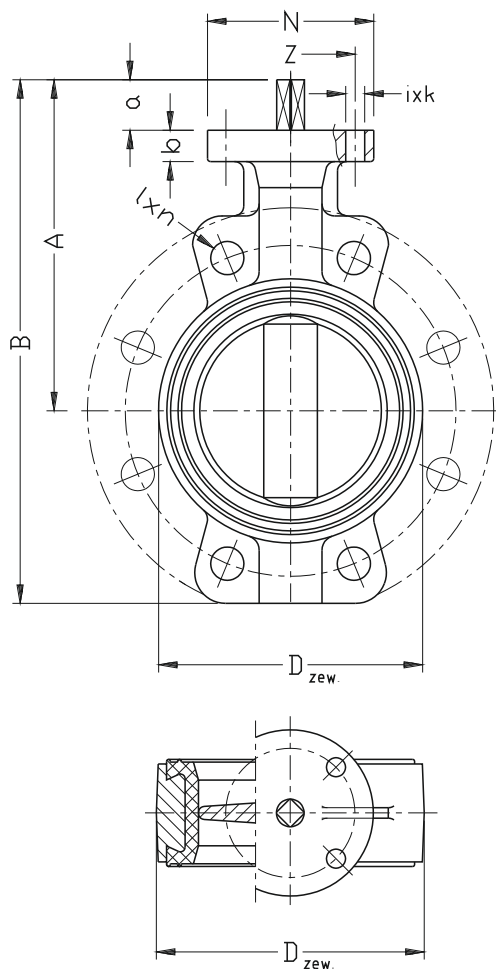
Accessories:

Gearbox
Electric multi-turn explosion proof actuators - version EX
Pneumatic actuator

Installation:

DN40-DN250 in any position. Over DN250 shaft in horizontal position





No.	Part	Standard execution
1	Body	Ductile cast iron EN-GJS 400-15 EN 1560
2	Disc	Ductile cast iron EN-GJS 400-15 EN 1560 Stainless steel 1.4401(*) EN 10027-2
3	Ring	Rubber NBR EN ISO 1629
4	Shaft	Stainless steel 1.4021 EN 10027-2
5,6 7,8	Sleeve	Brass CW617N EN 1412 PTFE(*)
9	O-ring	Rubber NBR EN ISO 1629
(*) - other material variants on special request		

DN	PN			L	Lm	A	B	D _{ZEW.}	d	D PN10	D PN16	K PN10	K PN16	I PN10	I PN16	n PN10	n PN16	ISO 5211	I x k	N	z	S	a	Weight		
	10	16	10/16																							
[mm]	[bar]			[mm]														[szł]		-	[mm]					[kg]
40	-	-	v	33	36	121	176	76	76	150	150	110	110	19	19	4	4	F05	4x7	65	50	11	28	3		
50	-	-	v	43	45	137	222	97	92	165	165	125	125	19	19	4	4	F05	4x7	65	50	11	28	4		
65	-	-	v	46	49	150	235	108	106	185	185	145	145	19	19	4	4	F05	4x7	65	50	11	28	5		
80	-	-	v	46	49	160	245	127	114	200	200	160	160	19	19	8	8	F05	4x7	65	50	11	30	7		
100	-	-	v	52	55	182	280	160	143	220	220	180	180	19	19	8	8	F07	4x9	90	70	14	30	8		
125	-	-	v	56	59	207	328	188	170	250	250	210	210	19	19	8	8	F07	4x9	90	70	14	30	8		
150	-	-	v	56	59	223	357	210	203	285	285	240	240	23	23	8	8	F07	4x9	90	70	17	30	13		
200	-	-	v	60	63	255	418	270	252	340	340	295	295	23	23	12	12	F10	4x12	125	102	17	30	20		
250	-	-	v	68	72	314	510	331	306	395	405	350	355	23	28	12	12	F10	4x12	125	102	22	40	29		
300	-	-	v	78	82	342	564	372	364	445	460	400	410	23	28	12	12	F10	4x12	125	102	22	45	40		
350	-	-	v	78	82	365	640	414	431	505	520	460	470	23	28	16	16	F10	4x12	125	102	22	45	47		
400	-	-	v	102	106	410	725	488	480	565	580	515	525	28	31	16	16	F14	4x18	175	140	27	60	98		
450	-	-	v	114	118	451	775	536	525	615	640	565	585	28	31	20	20	F14	4x18	175	140	27	60	127		
500	-	-	v	127	131	490	866	593	590	670	715	620	650	28	34	20	20	F14	4x18	175	140	36	65	185		
600	-	-	v	154	158	565	1031	825	688	788	840	725	770	31	37	20	20	F16	4x22	210	165	36	66	275		

We reserve the rights to modify the production program and the given data without separate notices due to the permanent company development.