

**Butterfly check valve
with counterweight**

PN10
PN16

WATER



Butterfly check valve DN300

Product description (standard execution):

- Eccentric disc made of ductile cast iron EN-GSJ 400-15
- Installation on horizontal and vertical pipeline
- Slide bearings made of bronze and PTFE
- Body sealing: metal ring + EPDM NBR or FKM - interchangeable
- Additional shaft sealing made of NBR, EPDM or FKM o-rings
- Body made of ductile cast iron EN-GSJ 400-15
- Possible execution : I - horizontal line, II – vertical line - flow from the bottom, III- vertical line – flow from the top
- Lever location: right side (P) and left side (L) for horizontal pipeline
- Epoxy coating minimum 250 microns or polyvinyl coating minimum 100 microns according to EN 14901
- End connection according to EN 1092-2 (DIN 2501) pressure PN10; PN16
- Face to face according to producer documentation JAFAR
- Product according to EN 1074-1; EN 1074-3
- Product marking according to : EN 19, EN 1074

Application:

Water network and tanks. Transport of industrial water and non aggressive liquids.

Working conditions:
temp. up to +70°C
pressure up to 1.6 MPa.

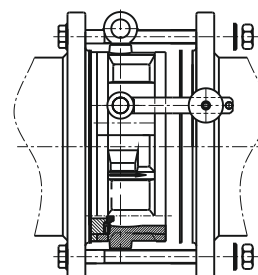
Execution variant:

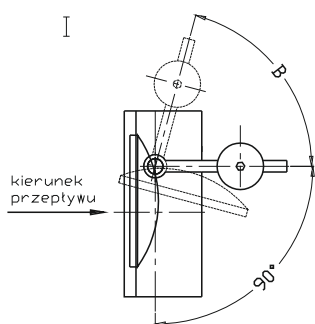
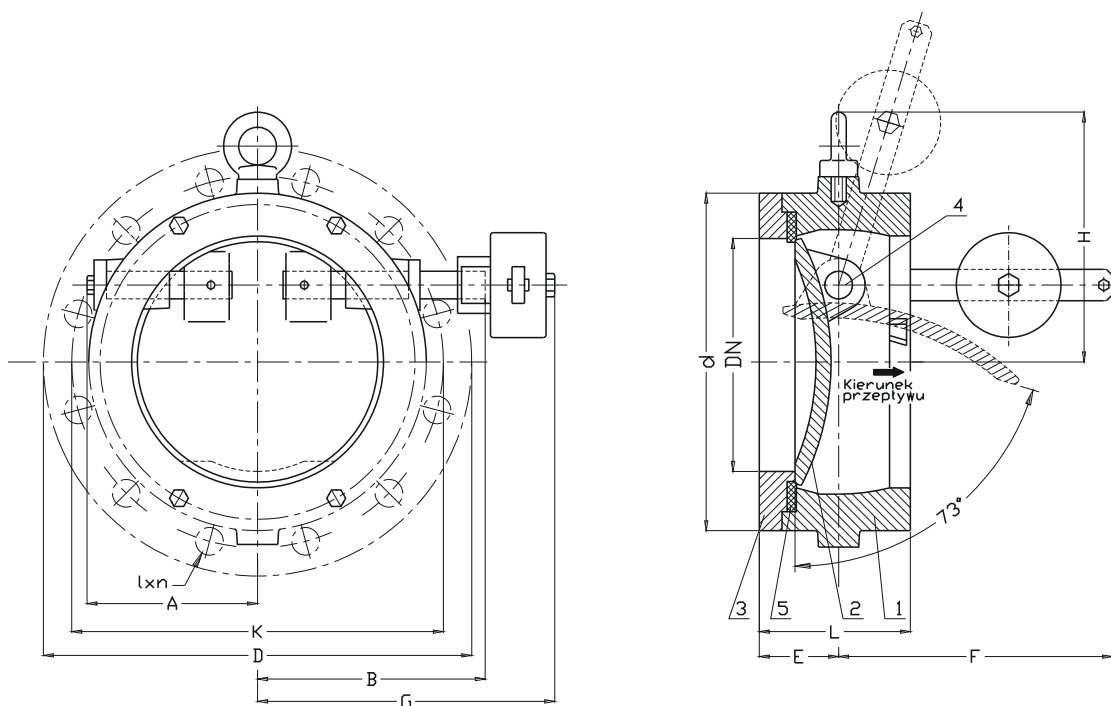
With damper

Test control:

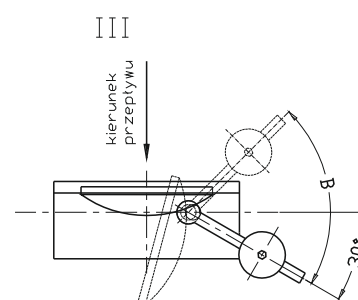
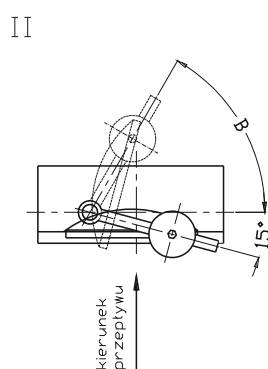
Hydraulic test according to EN 1074-1; EN 1074-2; EN 12266-1
Seat: 1,1 x PN
Body: 1,5 x PN

Installation:





$B = 75^\circ - 78^\circ$



DN	PN	L	A	B	E	H	F	G	D	K	d	l x n PN16(PN10)	Weight
[mm]	[bar]							[mm]					[kg]
250	10/16	135	159	222	68	231	250	290	405	355	320	28(23)x12	35
300	10/16	160	186	245	75	276	300	314	460	410	370	28(23)x12	51
350	10/16	180	226	277	88	306	350	367	520	470	430	28(23)x16	75
400	10/16	200	283	309	100	346	400	390	580	525	482	31(28)x16	97
500	10/16	240	313	385	130	404	500	475	715	650	610	34(28)x20	157
600	10/16	260	367	454	147	458	600	563	840	770	720	37(31)x20	255
800	10/16	241	415	515	140	530	900	630	1025	950	901	41(34)x24	453

No.	Part	Standard execution
1	Body	Ductile cast iron EN-GJS 400-15 EN 1560
2	Disc	Ductile cast iron EN-GJS 400-15 EN 1560
3	Ring	Ductile cast iron EN-GJS 400-15 EN 1560
4	Shaft	Stainless steel 1.4021 EN 10027-2
5	Sealing ring	Rubber : NBR, EPDM(*), FKM(*) EN ISO 1629
(*) - other material variants on special request		