

Ball valve
 reduced bore flanged

 PN 16
 PN 25
 PN 40

INDUSTRY


Ball valve DN100

Product description (standard execution):

- Ball seat made of PTFE + C
- The ball is made of stainless steel in grade 1.4301
- Inseparable body construction
- Spindle made of stainless steel improved in grade 1.4021
- EPDM or Viton O-ring spindle seal + Teflon ring
- Reduced bore
- Corrosion protection according to EN ISO 12944-5
- Flange connections according to EN 1092-2 (DIN 2501), pressure PN16, PN25, PN40
- Face to face according to EN558-A1 row 1 (DIN3202)
- Body made of steel P265 GH (1.0425)
- Product according to EN 1983
- Product marking according to : EN 19, EN 1074

Application:

Industrial water lines, heating instalations and non agresive liquids.
 Working conditions:
 temp. from -20°C up +160°C
 pressure up to 4.0 MPa to DN50, 2.5MPa to DN300

Test control:

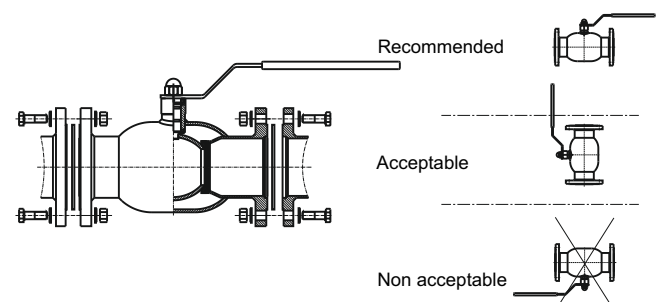
Water pressure test according to EN 1074-1; EN 1074- 2; EN 12266-1
 Seat: 1,1 x PN
 Body: 1,5 x PN
 Operation torque test

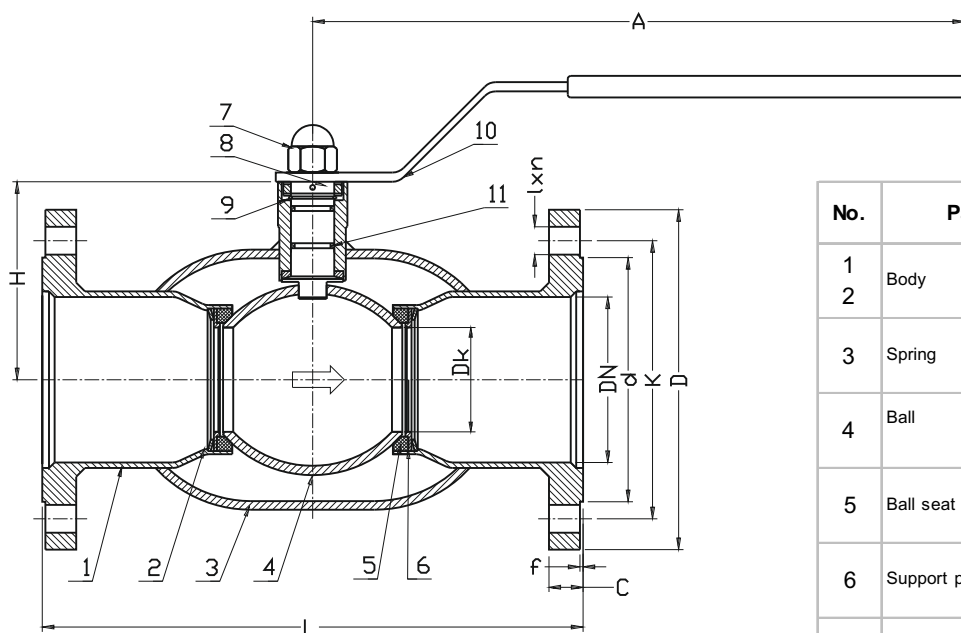
Accessories:

Pillar with handwheel - see: 9113
 Pillar for electric actuator - see: 9114
 Street box - see: 9305

Execution variant:

For actuator
 With electric or pneumatic actuator
 With gear box
 With inductive sensors

Installation:




No.	Part	Standard execution
1 2	Body	Steel P265GH (1.0425) EN 10028-2
3	Spring	Steel 1.8159 EN 10270-3
4	Ball	Steel 1.4541 1.4301 PEN 10088-1
5	Ball seat	PTFE + C EN ISO 13000-1
6	Support plate	Steel 1.0425 EN 10028-2
7	Nut	Steel Fe/Zn5, Stainless steel A4 EN ISO 4032
8	Spindle	Steel 1.4301 EN 10088-1
9 11	O-ring	EPDM VITON EN ISO 1629
10	Lock lever	Steel 1.0038 EN 10025-2

DN	PN	L	Dk	D	C	d	H	f	K	n	l	A	Weight
[mm]	[bar]									[szt]			[kg]
15	16 / 25 / 40	130	10	95	14	45	70	2	65	4	14	120	1,7
20	16 / 25 / 40	150	15	105	16	58	70	2	75	4	14	120	2,4
25	16 / 25 / 40	160	20	115	16	68	85	2	85	4	14	150	3,0
32	16 / 25 / 40	180	25	140	18	78	90	2	100	4	18	150	4,6
40	16 / 25 / 40	200	32	150	18	88	125	2	110	4	18	190	5,6
50	16 / 25 / 40	230	40	165	20	102	125	2	125	4	18	190	7,5
65	16	290	50	185	20	122	145	2	145	8 (4)	18	280	11,0
65	25	290	50	185	22	122	145	2	145	8	18	280	11,6
80	16	310	65	200	20	138	150	2	160	8	18	280	13,2
80	25	310	65	200	24	138	150	2	160	8	18	280	14,7
100	16	350	80	220	22	158	170	2	180	8	18	280	16,7
100	25	350	80	235	26	162	170	2	190	8	22	280	19,9
125	16	400	100	250	22	188	180	2	210	8	18	420	25,8
125	25	400	100	270	28	188	180	2	220	8	26	420	31,2
150	16	480	125	285	24	212	210	2	240	8	22	550	34,4
150	25	480	125	300	30	218	210	2	250	8	26	550	40,5
200	16	600	150	340	26	268	260	2	295	12	22	-	72,0
200	25	600	150	360	32	278	260	2	310	12	26	-	81,0
250	16	730	200	405	29	320	-	2	355	12	26	-	100,0
250	25	730	200	452	35	335	-	2	370	12	30	-	111,8
300	16	850	250	460	32	378	-	2	410	12	26	-	200,0
300	25	850	250	485	38	395	-	2	430	16	30	-	215,1

We reserve the rights to modify the production program and the given data without separate notices due to the permanent company development.