

Ball valve
reduced bore for welding

PN25
PN40

INDUSTRY



Ball valve DN50

Product description (standard execution):

- Ball seat made of PTFE + C
- The ball is made of stainless steel in grade 1.4301
- Inseparable body construction
- Spindle made of stainless steel improved in grade 1.4021
- EPDM or Viton O-ring spindle seal + Teflon ring
- Reduced bore
- Corrosion protection according to EN 14091
- Face to face according to producer documentation JAFAR
- Body made of steel P265 GH (1.0425)
- Product according to EN 1983
- Product marking according to : EN 19: EN 1074

Application:

Industrial water lines, heating instalations and non agresive liquids.
Working conditions:
temp. from -20°C up +160°C
pressure up to 4.0 MPa to DN50, 2.5MPa to DN300

Test control:

Water pressure test according to EN 1074-1; EN 1074- 2; EN 12266-1
Seat: 1,1 x PN
Body: 1,5 x PN
Operation torque test

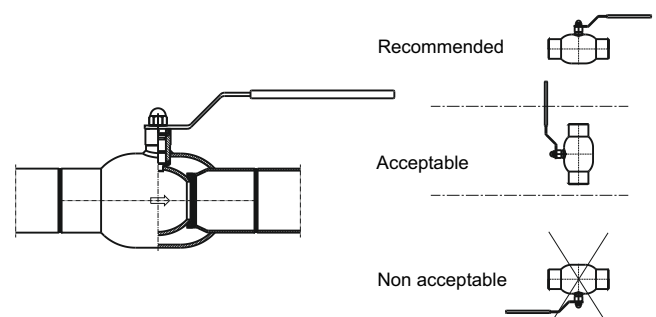
Accessories:

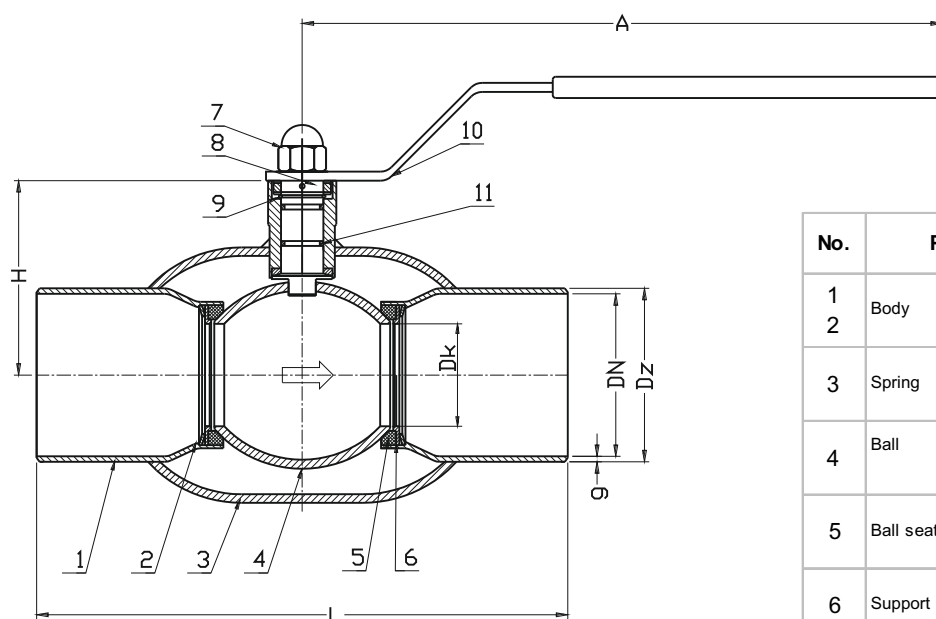
Pillar with handwheel - see: 9113
Pillar for electric actuator - see: 9114
Street box - see: 9305

Execution variant:

For actuator
With electric or pneumatic actuator
With gear box
With inductive sensors

Installation:





No.	Part	Standard execution
1 2	Body	Steel P265GH (1.0425) EN 10028-2
3	Spring	Steel 1.8159 EN 10270-3
4	Ball	Steel 1.4541, 1.4301 EN 10088-1
5	Ball seat	PTFE + C EN ISO 13000-1
6	Support plate	Steel 1.0425 EN 10028-2
7	Nut	Steel Fe/Zn5, Stainless steel A4 EN ISO 4032
8	Spindle	Steel 1.4301 EN 10088-1
9 11	O-ring	EPDM VITON EN ISO 1629
10	Lock lever	Steel 1.0038 EN 10025-2

DN	PS	L	Dk	Dz	g	H	A	Kv	Weight
[mm]	[bar]	[mm]						[m³/h]	[kg]
15	40	230	10	21,3	3,1	50,7	120	6	0,8
20	40	230	15	26,9	2,3	53,5	120	14	1,0
25	40	230	20	33,7	2,6	56,9	150	26	1,3
32	40	260	25	42,4	3	60,2	150	41	1,6
40	40	260	32	48,3	3	83,2	190	67	2,2
50	40	300	40	60,3	3	89,2	190	105	3,0
65	25	300	50	76,1	3	109,1	280	182	4,8
80	25	300	65	88,9	4	121,5	280	315	6,7
100	25	325	80	114,3	4	149,2	280	420	9,9
125	25	325	100	139,7	4,5	164,9	420	650	14,5
150	25	350	125	168,3	6	187,2	550	1070	23,5
200	25	400	150	219,1	4,5	224,5	-	1420	56,0
250	25	530	200	273,1	5	267,5	-	2620	100,0
300	25	550	250	323,9	5,6	317	-	5820	152,0

We reserve the rights to modify the production program and the given data without separate notices due to the permanent company development.