

MASTervalve SWING GxG

**FIRE
PROTECTION**



Swing check valve
Grooved 6251

Product description:

- Compact design - high tightness
- Disc made of SS sealing made of EPDM o-rings
- Body made of ductile cast iron EN-GJS 450-10
- Epoxy coating minimum 250 microns according to EN 14901 and ANSI/AWWA C550
- Grooved ends according to AWWA C606 & ISO 6182
- Product according to FM, VdS

Application:

Fire protection systems temperature from 0°C to +70°C

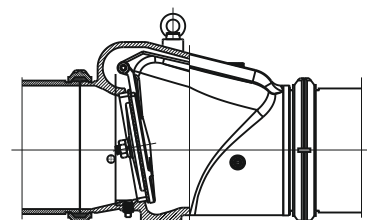
Optional types:

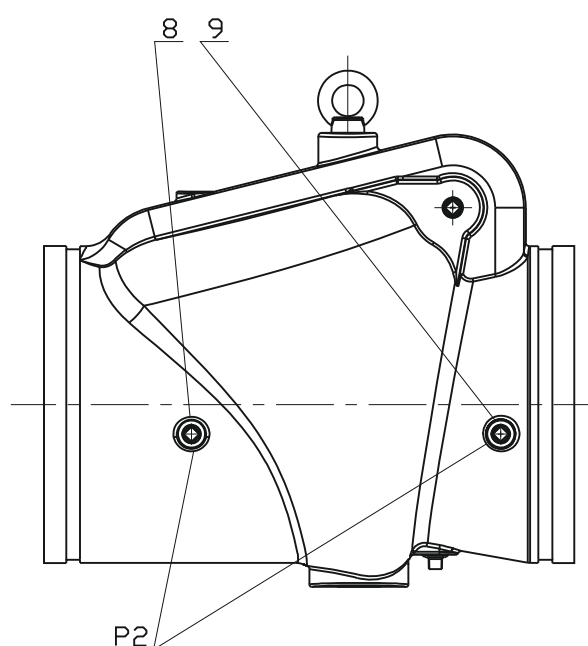
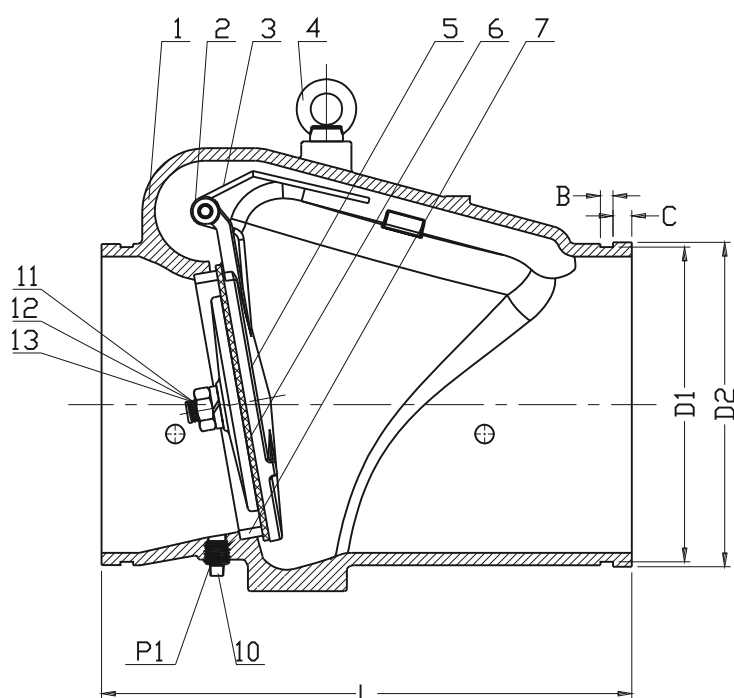
SS seat ring,
Bronze plug,

Test control:

Water pressure test according to FM, VdS, EN-12266
Seat Leakage Test: 1,5 x PN
Body pressure test: 2 x PN

Assembling:





No.	Part	Material	No.	Part	Material
1	Body	ASTM A536, 65-45-12	6	Disc sealing ring	EPDM; EN ISO 1629
2	Hinge pin	Stainless steel 1.4021 EN 10088-1	7	Seat ring	ASTM B62 C83600
3	Spring	Stainless steel 1.4301 EN 10088-1	8, 9, 10,	Plug	Malleable iron galvanized
4	Eye bolt	Carbon steel zinc plated	11	Bolt	Stainless steel 1.4301 EN 10088-1
5	Disc	DN50-100 Stainless steel 1.4301 DN150-300 ASTM A536, 65-45-12	12	Washer	Stainless steel 1.4301 EN 10088-1
			13	Nut	Stainless steel 1.4301 EN 10088-1

Partnumber	CE	FM	VdS	DN		PN	L	D1	D2	B	C	P1	P2	Weight
				[inch]	[mm]	[PSI]						[mm]		[kg]
6251-0050-8E300	v	v	v	2"	50	300	171	57.15	60.3	7.93	15.88	1/2-14NPT	3/8-18NPT	3.3
6251-0065-8E300	v	v	v	-	65		184	69.09	76.1	7.93	15.88	1/2-14NPT	3/8-18NPT	3.7
6251-0073-8E300	v	v	-	2 1/2"	-		184	69.09	73	7.93	15.88	1/2-14NPT	3/8-18NPT	3.7
6251-0080-8E300	v	v	v	3"	80		197	84.94	88.9	7.93	15.88	1/2-14NPT	3/8-18NPT	4.7
6251-0100-8E300	v	v	v	4"	100		210	110.08	114.3	9.53	15.88	1/2-14NPT	1/2-14NPT	7.5
6251-0125-8E300	v	-	v	-	125		248	137.03	139.7	9.53	15.88	1/2-14NPT	1/2-14NPT	10
6251-0141-8E300	v	-	-	5"	-		248	137.03	141	9.53	15.88	1/2-14NPT	1/2-14NPT	10
6251-0150-8E300	v	v	v	-	150		324	163.96	168.3	9.53	15.88	1/2-14NPT	1/2-14NPT	16.2
6251-0165-8E300	v	v	-	6"	-		324	163.96	165.1	9.53	15.88	1/2-14NPT	1/2-14NPT	16.2
6251-0200-8E300	v	v	v	8"	200		371	214.4	219.1	11.13	19.05	1/2-14NPT	1/2-14NPT	27
6251-0250-8E300	v	v	v	10"	250		457	268.28	273	12.7	19.05	1/2-14NPT	1/2-14NPT	52
6251-0300-8E300	v	v	v	12"	300		535	318.29	323.9	12.7	19.05	1/2-14NPT	1/2-14NPT	75.6

We reserve the rights to modify the production program and the given data without separate notices due to the permanent company development.