

Ball check valve
flanged

PN10
PN16

SEWAGE

WATER



Ball check valve 6516 DN100



Ball check valve 6516 DN500

Product description (standard execution):

- Straight full bore
- Simple and compact design – high durability
- Flange connection according to EN 1092-2 (DIN 2501) pressure PN10; PN16
- Face to face row 48 according to EN 558+A1 (DIN3202)
- Body and bonnet made of ductile cast iron EN-GJS 400-15, EN 1560 (DIN 1693)
- NBR/EPDM fully galvanized bowl (made of aluminum alloy or cast iron)
- Body-bonnet o-ring gasket: NBR/EPDM
- Product intended for use in the pump system installations to flow cut
- Epoxy coating minimum 250 microns according to EN 14901
- Body bonnet Zinc coated or stainless steel screws protected by wax or plastic caps
- Products according to EN 12050-4; EN 1074-1 and EN 1074-3
- Products 6516 designed for use in pumping/pressurized installations
- Products 6526 designed for use in gravity based installations
- Products marking according to EN 19; EN 1074

Application:

Water and sewage networks and tanks. Transport of non aggressive liquids.
 Working conditions:
 temp. up +70°C
 working pressure up to 1.6 MPa

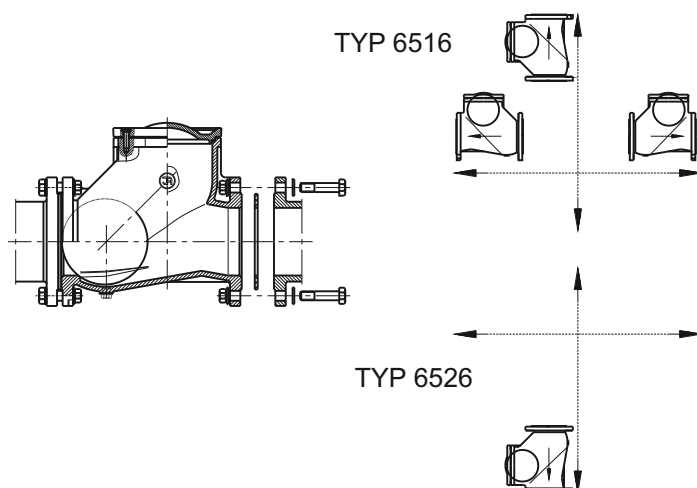
Test control:

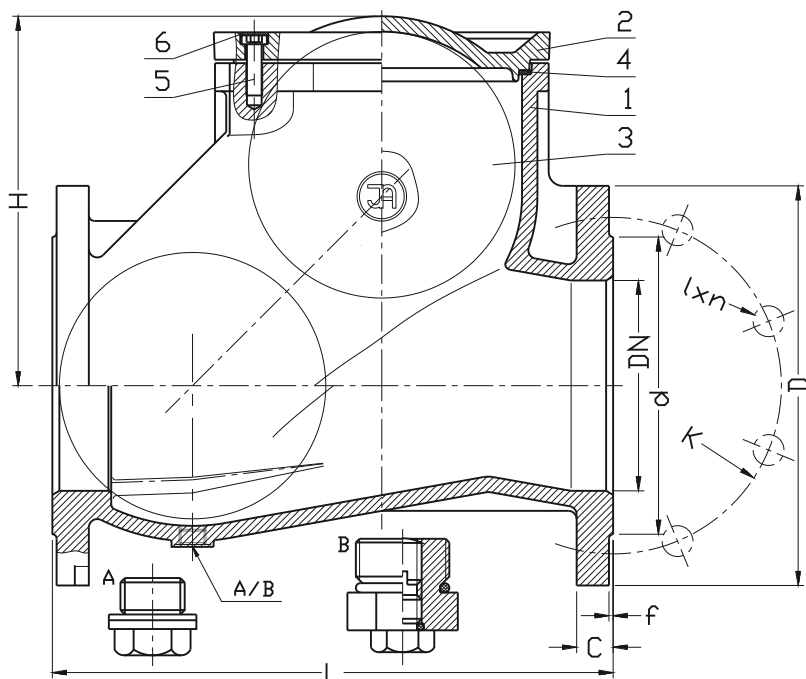
Water pressure test according to EN 1074-1; EN 1074-3; EN 12266-1
 Seat: 0,5 to 1,1 xPN
 Body: 1,5 x PN

Execution variant:

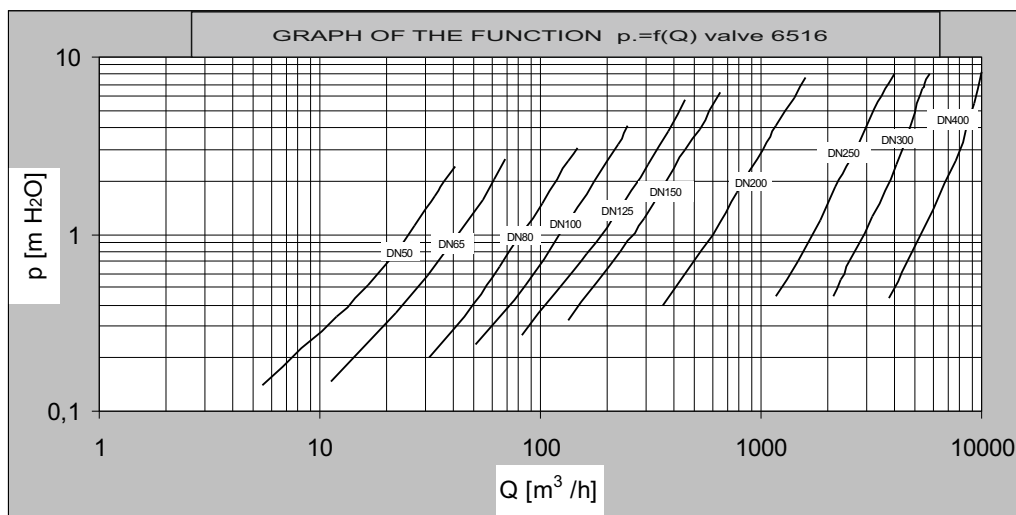
SS body bonnet screws
 With drain plug (A)
 With drain plug with vent mechanism (B)

Installation:





No.	Part	Standard execution
1	Body	Ductile cast iron EN-GJS 400-15 EN 1560
2	Bonnet	Ductile cast iron EN-GJS 400-15 EN 1560
3	Ball	Ductile cast iron EN-GJS 400-15 EN 1560 Aluminium AISi EN 1706 Rubber NBR or EPDM(*) EN-ISO 1629
4	Gasket	Rubber NBR or EPDM(*) EN-ISO 1629
5	Screw	Steel Fe/Zn5 Stainless steel A2(*) EN ISO 4762
6	Screw stopper	Wax
- other material variants on special request		



DN	PN	L number 48	H	d	D	K	I	C	f	n	Weight	Weight
[mm]	[bar]				[mm]					-	6516[kg]	6526[kg]
50	16	200	113	102	165	125	19	19	3	4	8	8
65	16	240	126	122	185	145	19	19	3	4	13	12
80	16	260	162	138	200	160	19	19	3	8	17	17
100	16	300	194	158	220	180	19	19	3	8	24	22
125	16	350	214	188	250	210	19	19	3	8	34	33
150	16	400	260	212	285	240	23	19	3	8	52	48
200	16	500	320	268	340	295	23	20	3	12	83	74
250	16	600	365	319	405	355	28	22	3	12	136	106
300	16	700	427	370	460	410	28	25	4	12	229	203
200	10	500	320	268	340	295	23	20	3	8	83	74
250	10	600	365	319	405	350	23	22	3	12	136	106
300	10	700	427	370	460	400	23	25	4	12	229	203
350*	10	800	427	429	520	460	23	27	4	16	260	237
400	10	900	537	480	580	515	28	28	4	16	395	-
500	10	1100	650	582	670	620	28	32	4	20	560	-

* - reduced bore