

Check valve
interflanged

PN10
PN16

SEWAGE

WATER



Check valve DN100

Product description (standard execution):

- O-ring disc sealing
- Disc spring made of stainless steel
- Maintenance free
- Shaft made according to 1.4305 EN 10027-2
- Face to face according to producer documentation
- Body and disc made of steel 1.4301 or 1.0037/Zn
- Products according to EN 1074-1; EN 1074-3

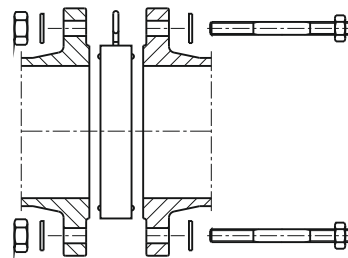
Application:

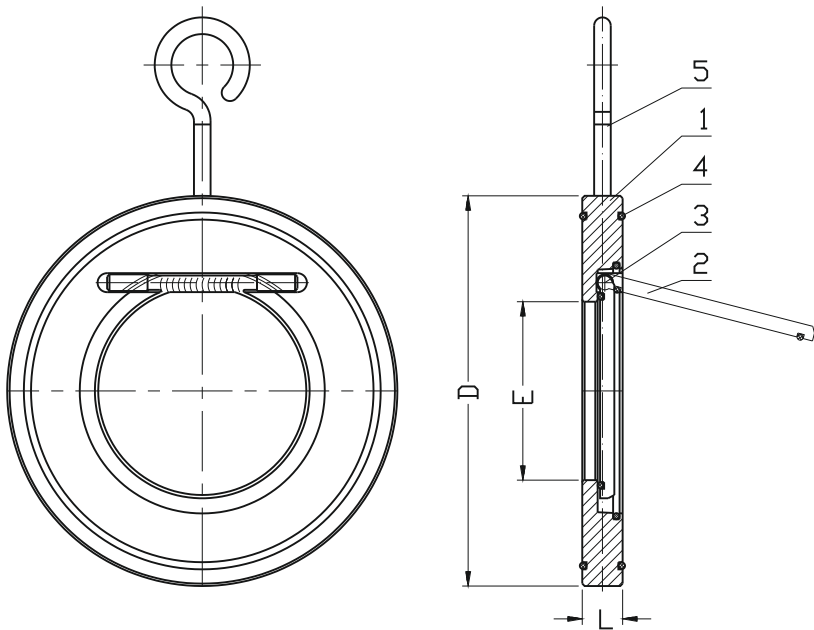
Water and sewage networks and tanks. Transport of non aggressive liquids.
Working conditions:
temp. up +150°C
working pressure up to 1.6 MPa

Installation:

Test control:

Water pressure test according to EN 1074-1; EN 1074-3; EN 12266-1
Seat: 0,5 to 1,1 x PN
Body: 1,5 x PN





No.	Part	Standard execution
1	Body	Steel 1.0037/Zn; 1.4310(*) EN 10027-2
2	Flap	Steel 1.0037/Zn; 1.4310(*) EN 10027-2
3	Spring(*)	50SJR/Zn EN 74/H-84032 Steel 1,4310(*) EN 10027-2
4	Seal	Rubber Viton EN-ISO 1629
5	Screw	Steel 1.4310 EN 10027-2
(*) - other material variants on special request		

DN	D	E	L	Weight
[mm]				[kg]
40	94	21	14	0,5
50	104	32	14	0,8
65	122	40	14	1,3
80	134	51	15	1,5
100	172	70	18	2,3
125	194	92	18	3,0
150	220	110	20	4,5
200	276	163	22	9,3
250	337	193	26	15,0
300	407	234	28	24,0