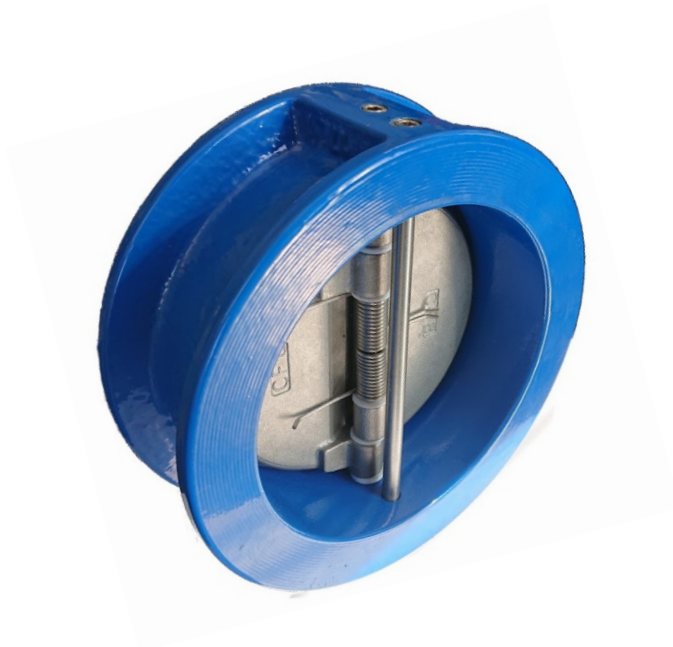


**Dual plates swing check valve
interflanged**

**PN10
PN16**

WATER



Product description (standard execution):

- Simple and compact design – high durability
- Silent and reliable operation
- O-ring disc sealing
- Disc spring made of stainless steel
- Maintenance free
- Shaft made of stainless steel
- Face to face according to producer documentation
- Body made of grey iron EN-GJL 250; EN 1560
- Epoxy coating minimum 250 microns according to EN 14901
- Product according to EN 1074-1; EN 1074-3
- Product marking according to EN 19; EN 1074

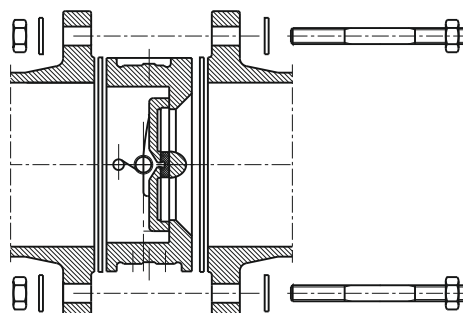
Application:

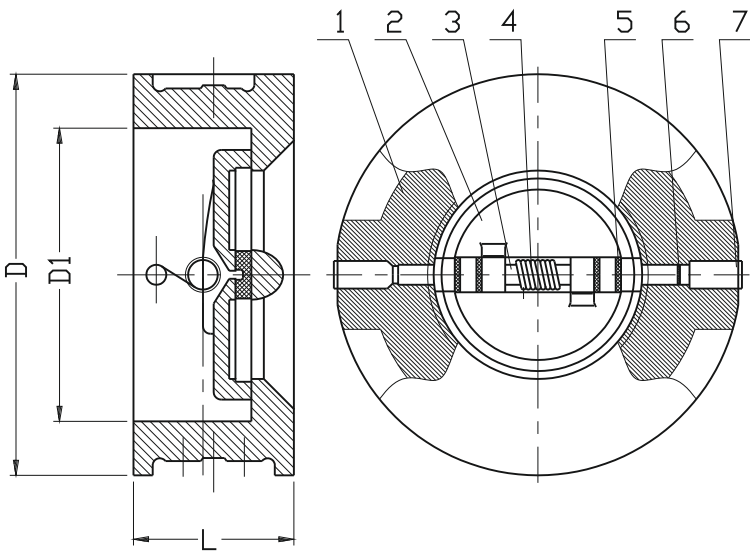
Potable water, other chemically non-aggressive liquids.
Working conditions:
temp. up +120°C
working pressure up to 1.6 MPa

Test control:

Water pressure test according to EN 1074-1; EN 1074-3; EN 12266-1
Seat: 0,5 to 1,1 xPN
Body: 1,5 x PN

Installation:





No.	Part	Standard execution
1	Body	Grey iron EN-GJL-250 EN 1560
2	Flap	Stainless steel 1.4401 EN 10027-2
3	Stem	Stainless steel 1.4021 EN 10027-2
4	Spring	Stainless steel 1.4301 EN 10027-2
5	Washer	PTFE Catalogue producer
6	Screw	Rubber EPDM EN - ISO 1629
7	Nut	Stainless steel 1.4301 EN 10027-2

DN	D	D1	L	Weight
[mm]				[kg]
50	102	66	54	1,8
65	122	78	54	2,4
80	134	90	57	3,2
100	172	115	64	4,8
125	194	141	70	7,3
150	220	170	76	10
200	277	210	95	14,2
250	337	273	108	23,6
300	407	324	143	37,5
350	447	356	184	62
400	511	406	191	74
450	546	457	203	100
500	602	508	213	155
600	715	600	222	215