

Air release valve
double orifice

PN10
PN16

SEWAGE



Relieve and areation valve

Product description (standard execution):

- Patented self-cleaning sealing with automatic double stage air release nozzle
- Kinetic Single stage air release
- Hydraulic impact prevention
- Stainless steel release device
- Revision for flushing
- Floating switch made of polyethylene
- Bonnet deflector
- NBR sealing parts resistant against municipal sewage
- All internal parts made of stainless steel 1.4301
- Body bonnet screws A2 made of stainless steel
- Body bonnet made of stainless steel 1.4301
- Product according to EN 1074-4
- Flange connection and connector according EN 1092-2(DIN2501) or threaded connection according to EN ISO 228-1 pressure PN10, PN16
- Minimum operating pressure equal to atmospheric pressure
- Threaded vent bonnet hole
- Product marking according to EN 19; EN 1074

Application:

Air release valve intended for use at sewage lines - for air release and aeration of the pipelines. Working conditions: temp. up +70°C

Test control:

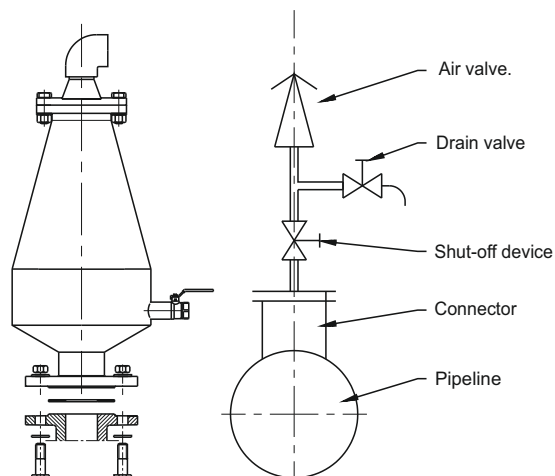
Water pressure test according to EN 1074-1; EN 1074-2; EN 12266-1
Seat: 1,1 x PN
Body: 1,5 x PN

Execution variant:

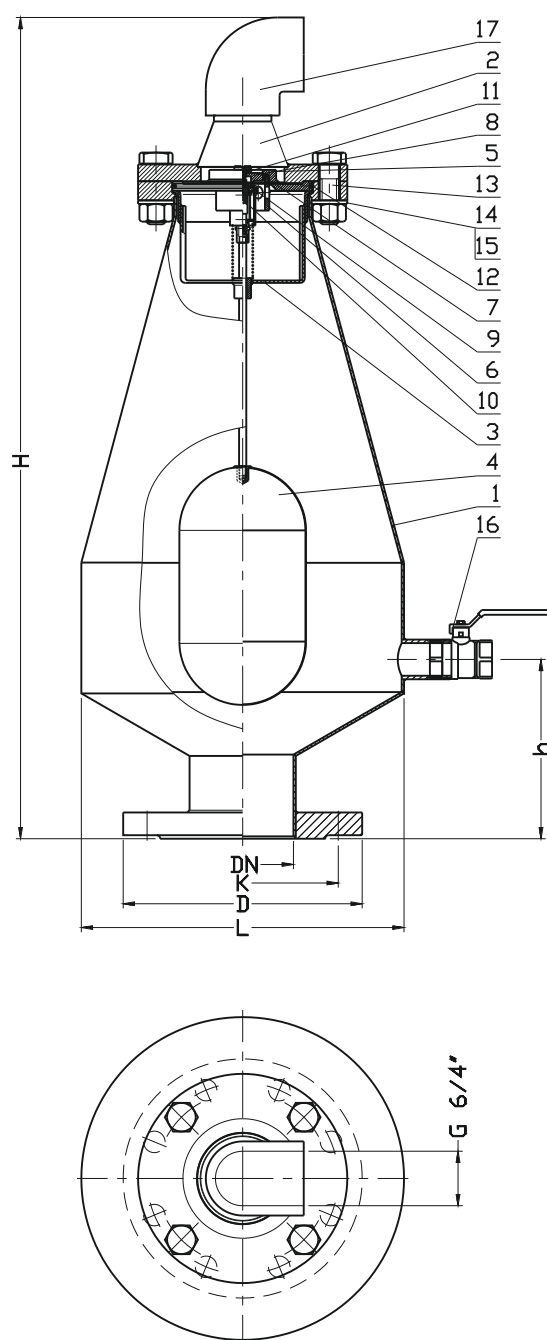
Stainless steel 1.4401

Installation:

Recommended to mount in vertical position in highest or inflection point of pipeline

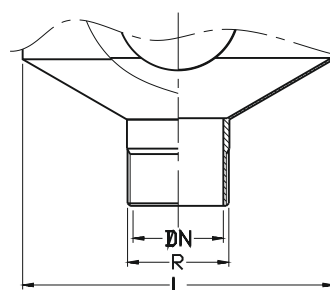


Flange connection



No.	Part	Standard execution
1	Complete body	Stainless steel 1.4301 EN 10027-2
2	Bonnet	Stainless steel 1.4301 EN 10027-2
3	Complete basket	Stainless steel 1.4301 EN 10027-2
4	Float	Stainless steel 1.4301 EN 10027-2 Polipropylene (*) EN ISO 19069-1
5	Seat	Stainless steel 1.4301 EN 10027-2
6	Basket	Stainless steel 1.4301 EN 10027-2
7	Valve head sealing	Rubber NBR EN-ISO 1629
8	Roller	Stainless steel 1.4301 EN 10027-2
9	Sealing	Rubber NBR EN-ISO 1629
10	Spring of valve	Stainless steel 1.4301 EN 10027-2
11	Sealing	Rubber NBR EN-ISO 1629
12	Sealing ring	Rubber NBR EN-ISO 1629
13	Screw	Stainless steel A2 EN ISO 4017
14	Nut	Stainless steel A4 EN ISO 4032
15	Washer	Stainless steel A2 EN ISO 7091
16	Ball valve DN25 PN16	Producer catalog
17	Bend PCV 6/4"	Producer catalog
(*) - other material variants on special request		

Threaded connection



DN	L	h	L	D	K	Weight
[mm]						[kg]
50	690	150	270	165	125	16,0
80	690	150	270	200	160	17,0
100	690	150	270	220	180	18,0
150	690	150	270	285	240	21,0
200	690	150	270	340	295	23,0

DN	H	h	L	R	Weight
[mm]					[kg]
50	690	150	270	2"	15,0
80	690	150	270	3"	16,0