

Air release valve
 single and double orifice

PN10
PN16

WATER



7040
 Single stage for potable water



7050
 Double stage for potable water

Product description (standard execution):

7040

- Automatic air release in the whole pressure range
- Hydraulic impacts prevention
- Bonnet hole enables assembling of additional air valves
- Body bonnet made of pressed brass CW617N; EN 1412
- Floating switch made of polyethylene
- Stainless steel release device set 1.4301
- Product according to EN 1074-4
- Threaded connection according to EN ISO 228-1 pressure PN10, PN16

7050

- Two types of valves enabling double stage assembly
- 7010 for single stage operation
- 7040 for double stage operation

Application:

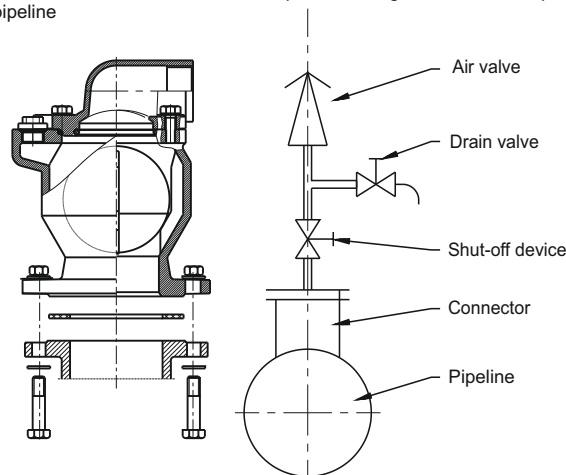
Air release valve intended for use at water lines - for air release and aeration of the pipelines. Working conditions:
 temp. up +70°C

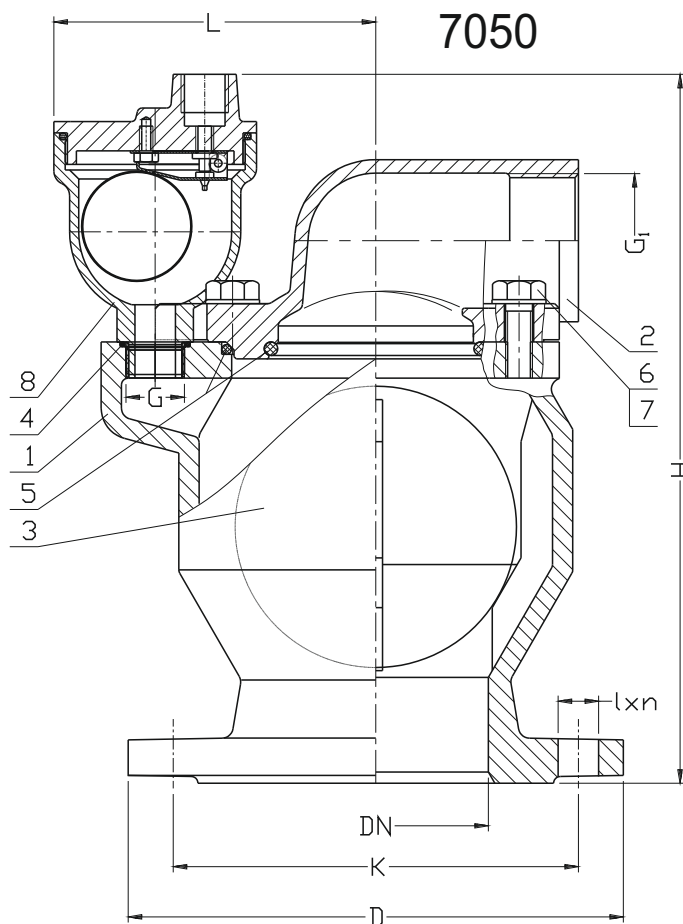
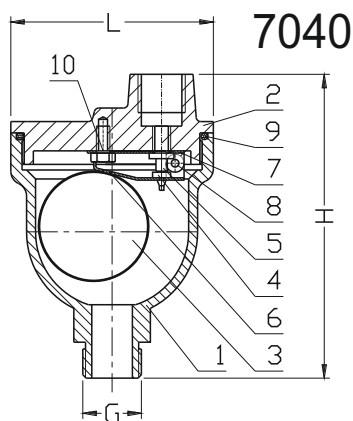
Test control:

Water pressure test according to EN 1074-1; EN 1074-2; EN 12266-1
 Seat: 1,1 x PN
 Body: 1,5 x PN

Installation:

Recommended to mount in vertical position in highest or inflection point of pipeline





No.	Part	Standard execution
1	Body	Brass CW617N EN 1412
2	Bonnet	Brass CW617N EN 1412
3	Float	Polipropylene EN ISO 19069-1
4	Sealing	Rubber EPDM or NBR(*) EN-ISO 1629
5	Nozzle	Stainless steel 1.4301 EN 10027-2
6	Lower lever	Stainless steel 1.4021 EN 10027-2
7	Vupper lever	Stainless steel 1.4021 EN 10027-2
8	Bolt	Stainless steel 1.4301 EN 10027-2
9	Sealing ring	Rubber EPDM or NBR (*) EN-ISO 1629
10	Screw	Stainless steel A2 EN ISO 4017
(*) - other material variants on special request		

G	H	L	Weight
[cal]	[mm]		[kg]
3/4"	135	85	1,6
1"	135	85	1,7
5/4"	135	85	1,7
6/4"	135	85	1,8

Choose the size of the valve breather aeration					
Pipeline	DN	80-250	300-400	450-550	600-900
Double stage for potable water	DN	50	80	100	150

No.	Part	Standard execution
1	Body	Ductile cast iron EN-GJS 400-15 EN 1560
2	Bonnet	Ductile cast iron EN-GJS 400-15 EN 1560
3	Vulcanized ball	Aluminium AISi EN 1706 Rubber EPDM or NBR (*) EN-ISO 1629
4	Sealing ring	Rubber EPDM or NBR (*) EN-ISO 1629
5	Sealing ring	Rubber EPDM or NBR (*) EN-ISO 1629
6	Screws	Stainless steel A2 EN ISO 4017
7	Washer	Stainless steel A2 EN ISO 7091
8	Air valve 7040	Separate specification
(*) - other material variants on special request		

DN	H	L	D	K	l x n	G	G ₁	Weight
[mm]						[cal]		[kg]
50/GW2"	250	108	165	125	19x4	3/4"	5/4"	8,5
80	280	128	200	160	19x8(4)*	3/4"	2"	15,5
100	316	141	220	180	19x8	3/4"	2"	19,5
150	355	173	285	240	23x8	3/4"	3"	34,5
200	355	173	340	295	23x8(12)*	3/4"	3"	35,6