

**Air release valve double orifice
with plastic chamber**

**PN10
PN16**

SEWAGE



Typ 7092



Product description (standard execution):

- Patented self-cleaning sealing of automatic double stage air release nozzle
- Kinetic Single stage of air release
- Hydraulic impacts prevention
- Easy and fast disassembling from the installation by quick release coupling
- Shut-off device cut the flow during service work
- Revision for flushing during service work
- Bonnet deflector
- Placed in plastic chamber with cover
- Chamber drainage
- All internal parts of air release valve and shut-off device made of stainless steel 1.4301
- Body bonnet made of stainless steel 1.0037; EN 10027-2 protected against corrosion
- Epoxy coating minimum 250 microns according to EN 14901
- Floating switch made of polyethylene
- Body bonnet screws made of stainless steel A2
- Product according to EN 1074-4
- Flange connection and connector according EN 1092-2(DIN2501) or threaded according EN ISO 228-1 pressure PN10, PN16
- Threaded vent bonnet hole
- Product marking according to EN 19; EN 1074

Application:

Air release valve intended for use at sewage lines - for air release and aeration of the pipelines. Working conditions: temp. up +70°C

Test control:

Water pressure test according to EN 1074-1; EN 1074-2; EN 12266-1
Seat: 1,1 x PN
Body: 1,5 x PN

Accessories:

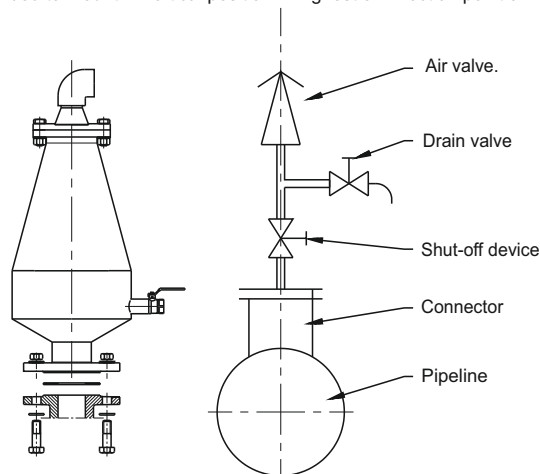
Adapter set - see: 7092

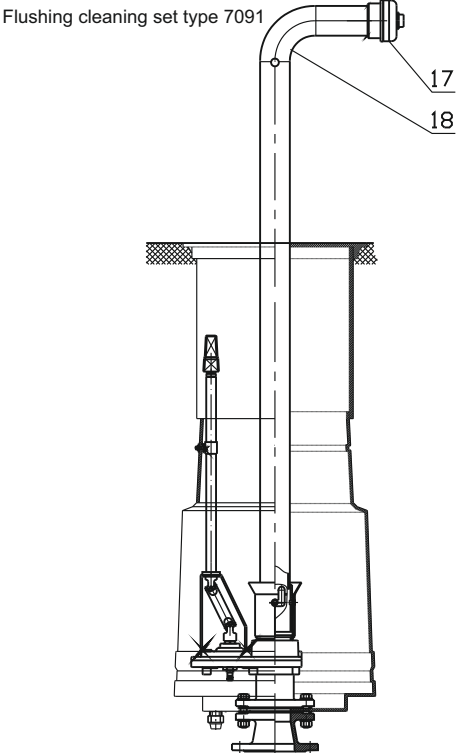
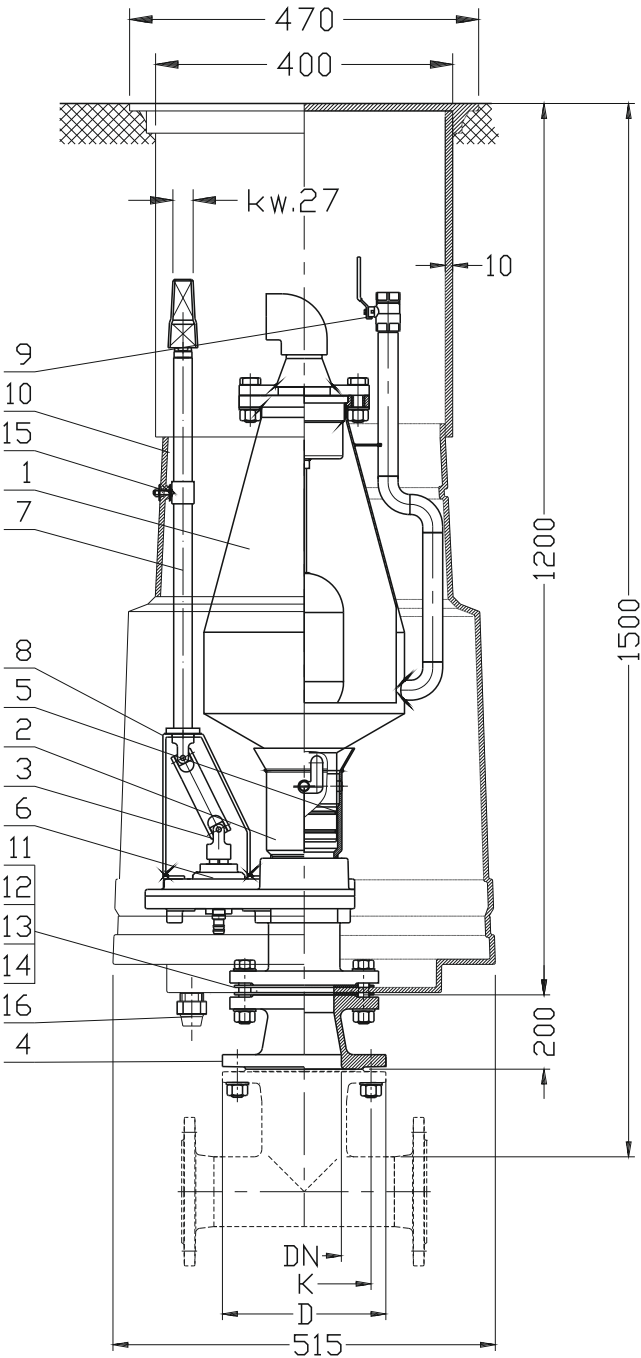
Execution variant:

Stainless steel 1.4301

Installation:

Recommended to mount in vertical position in highest or inflection point of pipeline





| No. | Part | Standard execution |
|-----|---|--------------------------------------|
| 1 | Valve | Steel 1.0037, 1.4301 EN 10027-2 |
| 2 | Quick connector | Steel 1.0037, 1.4301 EN 10027-2 |
| 3 | Coupling | Stainless steel 1.4301 EN 10027-2 |
| 4 | Double flanged concentric taper FFR | Producer catalogue |
| 5 | O-ring | Rubber NBR EN-ISO 1629 |
| 6 | Valve plate | Producer catalogue |
| 7 | Rigid extension spindle | Stainless steel 1.4301 EN 10027-2 |
| 8 | Support coupling | Steel 1.0037 EN 10027-2 |
| 9 | Ball valve 1" | Producer catalogue |
| 10 | Well | PEHD EN ISO 17855-1 |
| 11 | Screw | Stainless steel A2 EN ISO 4017 |
| 12 | Nut | Stainless steel A4 EN ISO 4032 |
| 13 | Washer | Stainless steel A2 EN ISO 7091 |
| 14 | Gasket flange | Rubber NBR EN-ISO 1629 |
| 15 | Handle | Stainless steel 1.4301 EN 10027-2 |
| 16 | Connector ϕ 32 | Producer catalogue |
| 17 | Socket B75 | Aluminium AISi EN 1706 |
| 18 | Cleaning and cleaning kit adapter 7092 | Stainless steel 1.4301 EN 10027-2 |

| DN | K | D | Weight |
|------|-----|-----|--------|
| [mm] | | | [kg] |
| 50 | 125 | 165 | 60 |
| 65 | 145 | 186 | 61 |
| 80 | 160 | 200 | 63 |
| 100 | 180 | 220 | 65 |
| 150 | 240 | 285 | 70 |

We reserve the rights to modify the production program and the given data without separate notices due to the permanent company development