

**Gas filter**  
Flanged, straight flow

PN10  
PN16

**GAS**



DN25 DN32 DN40



DN50



DN65 DN80 DN100 DN150

### Product description (standard execution):

- Body and cover made of ductile cast iron EN-GJS 400-15, EN-GJS 350-22-LT, steel L360NB/P355NL
- Cover made of P355NL steel, EN-GJS 350-22-LT ductile iron
- Body-to-cover o-ring seal: NBR elastomer (groove seated)
- Body bosses for drilling a gas vent (relief port) and a differential pressure gauge port on the inlet and outlet ends
- Cellulose filter element (see manufacturer's catalogue)
- Fast opening of the cover with stainless steel Allen socket screws
- ST-IGG-1501:2011 compliant
- Face to face according to producer documentation JAFAR
- Epoxy coating minimum 250 microns according to EN 14901 zinc coating in accordance with EN ISO 4042 GSK RAL Certificate
- Flange connection according to EN 1092-1, EN 1092-2 (DIN 2501) design pressure rating: PN10 or PN16
- Product marking according to EN 19, EN 1171
- Drilled bosses for 1/4" differential manometer and/or 3/8" relief port

### Application:

Gas lines networks with a maximum operating pressure of 1.6 MPa and an operating temperature range from -30°C to +60°C for EN-GJS 400-15 temperature range from -20 °C to + 60 °C

### Execution variant:

Nonwoven fabric filter

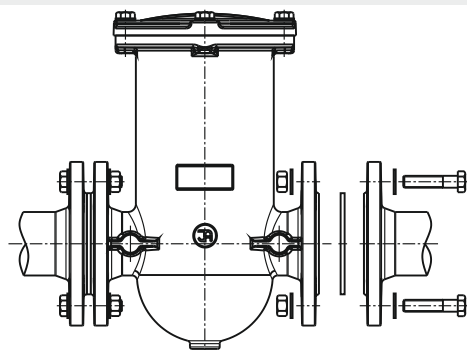
### Test control:

Water pressure test according to EN 12266-1  
Seat: 1,1 x PN;  
Body: 1,5 x PN  
Air pressure test according to EN 12266-1  
Body: 1,1 x PN

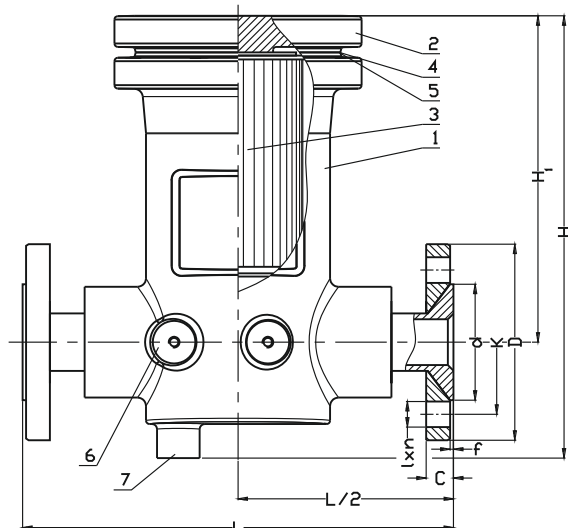
### Accessories:

Differential manometer

### Installation:

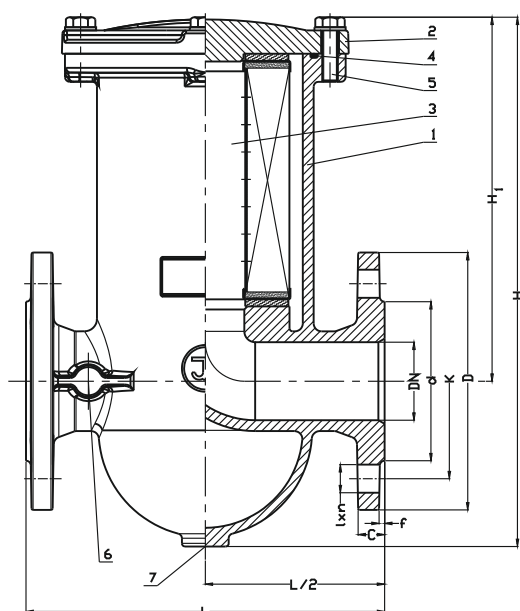


DN25 DN32 DN40

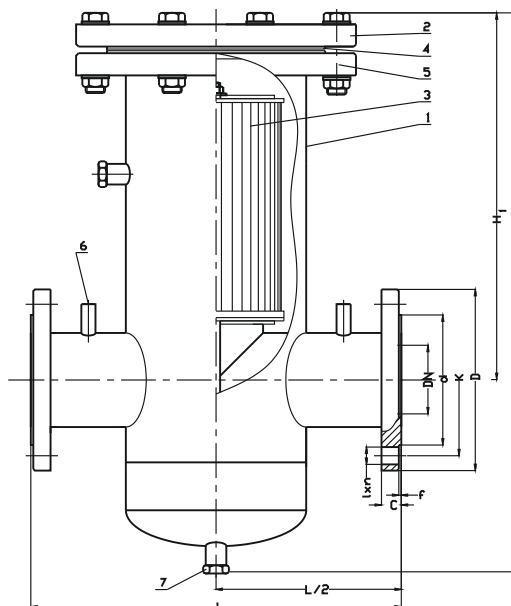


No.	Part	Standard execution
1	Body	Ductile cast iron EN-GJS-350-22-LT EN 1560 Steel L360NB(*) EN 10027-2 P355NL, EN 10216
2	Bonnet	Ductile cast iron EN-GJS-350-22-LT EN 1560 Steel P355NL(*) EN 10216
3	Filter element	Cellulose or fabric(*) Manufacturers catalogue
4	O-ring	Rubber NBR EN-ISO 1629
5	Screw	Stainless steel A2 EN ISO 4762
6	Differential manometer boss	
7	Relief port boss	
(*)-other material variants on special request		

DN50



DN65 DN80 DN100 DN150



DN	H	H1	L	d	D	K	I	C	f	n	Filter cartridge				Weight	
											cellulosic		non-woven			
											Type	filtration area	Type	filtration area		
[mm]											-	-	[m <sup>2</sup> ]	-	[m <sup>2</sup> ]	[kg]
Ductile cast iron EN-GJS 400-15																
25	266	198	280	65	115	85	14	19	3	4	GD 1	0,2	WG 0,5	0,17	15	
32	266	198	280	76	140	100	19	19	3	4	GD 1	0,2	WG 0,5	0,17	15	
40	266	198	280	84	150	110	19	19	3	4	GD 1	0,2	WG 0,5	0,17	17,5	
Ductile cast iron EN-GJS 350-22-LT																
50	330	220	230	99	165	125	19	19	3	4	GD 1	0,28	WG 1	0,28	15	
Steel L360NB/P355NL																
65	305	260	350	118	185	145	19	19	3	4	GD 1,5	0,28	WG 1	0,28	27,5	
80	495	325	400	132	200	160	19	19	3	8	GD 2	1,1	WG 1,5	0,64	42	
100	670	435	450	156	220	180	19	19	3	8	GD 2 GD 2W	1,4 2,1	WG 2	1,97	68	
150	830	495	600	211	285	240	23	19	3	8	GD 3 GD 3W	3 4,6	WG 3	5,7	128	

We reserve the rights to modify the production program and the given data without separate notices due to the permanent company development.