

**Underground hydrant  
with plate valve**

**PN10**

**WATER**



### Product description (standard execution):

- Construction prevents freezing – hydrant can be use in winter conditions / frost zones
- Dehydrator in the bottom part of hydrant. Water drainage from the stand to the ground after each use cycle
- Complete drainage after cut-off the
- Locking and closing elements made of brass
- Resistant against disinfectants (suggested solution NaOCl)
- Epoxy coating to EN 14901
- Working pressure PN10
- Face to face according to Jafar documentation
- Threaded connection according to EN ISO 10226-1
- Jaw connection DN25 or DN52 according to DIN 14317
- Product marking according to EN 19; EN 1074

### Application:

In plumbing installations in home gardens, plots or in systems enabling water withdrawal in the winter, for example for snowing ski slopes and running routes, and wherever access to water is required in locations away from the property. Yard hydrant is not designed for firefighting system. Medium temperature up to 70° C

### Test control:

Water pressure test according to EN 1074-1; EN 1074-2; EN 12266-1  
Seat: 1,1 x PN  
Body: 1,5 x PN

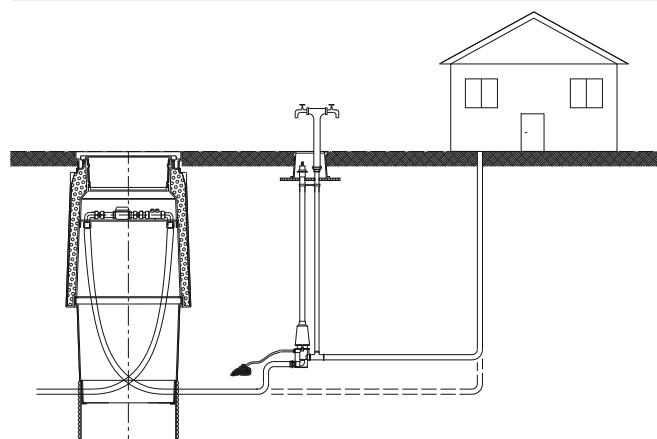
### Accessories:

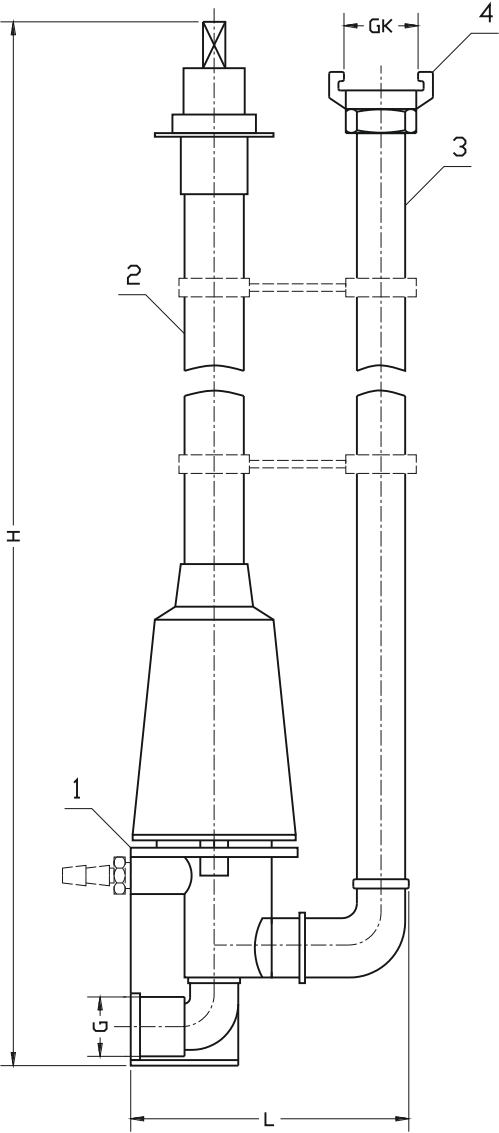
The hydrant key- see: 8014  
The hydrant outlet extension - see: 8015  
Street box - see: 9502-PEHD-GJL

### Execution variant:

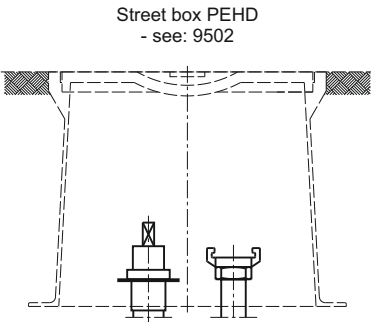
Column made of stainless steel 1.4301

### Installation:





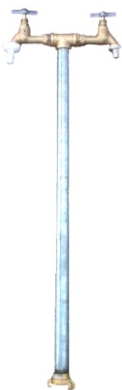
Built options:



Additional accessories:

The hydrant key  
8014

The hydrant outlet  
extension stand  
8015



No.	Part	Standard execution
1	Close valve with dehydrator	Ductile cast iron EN-GJS 400-15 PN-EN 1560
	Vulcanized wedge elastomer	Ductile cast iron EN-GJL-250 Ductile cast iron EN-GJS 400-15 EN 1560 Rubber EPDM EN-ISO 1629
	Stem	Steel 1.4021 EN 10027-2
2	Rigid extension spindle for connectors	Steel 1.0037 EN 10027-2 Polietylene PE EN ISO 1872-1
3	Stand	Steel 1.0037 EN 10027-2
4	Bayonet socket	Brass CW617N EN 1412 Aluminium AlSi EN 1706

DN	G	GK	H	L
[mm]	[cal]		[mm]	
25	1"	1"	1280	170
40	6/4"	2"	1280	170