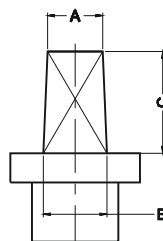
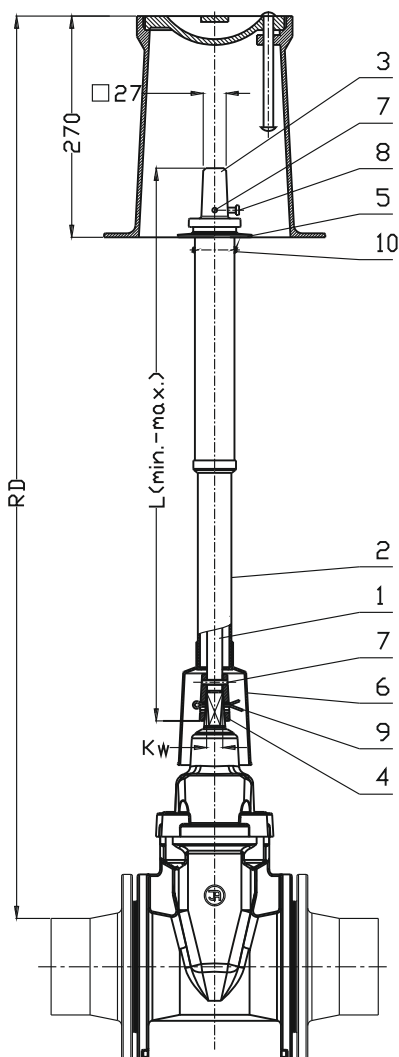


Telescopic spindle extension
**PN10
PN16**
GAS

Cap dimensions:

| | |
|-----------|-----|
| A = 12 mm | |
| B = 15 mm | S12 |
| C = 27 mm | |
| A = 27 mm | |
| B = 32 mm | S27 |
| C = 50 mm | |

| No. | Part | Standard execution |
|--|---------------|---|
| 1 | Spindle (Rod) | Steel Fe/Zn5 EN 10027-2 Stainless steel (*) EN 10027-2 |
| 2 | Casing liner | Polyethylene PE EN ISO 17855-1 |
| 3 | Cap | Ductile cast iron EN-GJS 400-15 EN 1560 |
| 4 | Coupling | Ductile cast iron EN-GJS 400-15 EN 1560 |
| 5 | Collar | Polyethylene PE EN ISO 17855-1 |
| 6 | Pipe bell | Polyethylene PE EN ISO 17855-1 |
| 7 | Spring pin | Steel Fe/Zn5; Stainless steel (*) EN ISO 8752 |
| 8 | Screw | Steel Fe/Zn5; Stainless steel (*) EN ISO 4017 |
| 9 | Split cotter | Steel Fe/Zn5; Stainless steel (*) EN ISO 1234 |
| 10 | Screw | Steel Fe/Zn5; Stainless steel (*) EN ISO 7049 |
| (*) - other material variants on special request | | |

Product description (standard execution):

- Spindle secured against tearing, the ability to adapt to the terrain in the given range
- Cap made of ductile cast iron EN-GJS 400-15
- The spindle tightly fitted into the square profile
- The coupling of ductile iron EN-GJS 400-15 mounted on the valve stem with the split cotter
- Casing liner cup pipe bell and thrust washer made of PE
- Pipe bell protects against pollution from the ground
- Height adjuster for setting casing at any height
- Pipe bell protects against pollution that are present in the ground
- Height adjuster for setting casing at any height

Application:

Flexible and safe extension of the valve stem. For manual operation of underground mounted armature

Accessories:

With the position indicator see: 9113, 9114
With T-key see: 9015
With street box see: 9505; 9506; 9507; 9508, 9514

| TYP 9007 | | RD 600-900 | | RD 900-1300 | | RD 1300-1800 | | RD 2000-2500 | | RD 2500-3100 | |
|----------|--------|----------------------------|----------------------------|----------------------------|----------------------------|----------------------------|----------------------------|----------------------------|----------------------------|----------------------------|----------------------------|
| DN | Kw | L _(min) [mm] | L _(max) [mm] | L _(min) [mm] | L _(max) [mm] | L _(min) [mm] | L _(max) [mm] | L _(min) [mm] | L _(max) [mm] | L _(min) [mm] | L _(max) [mm] |
| | | Weight [kg] | | Weight [kg] | | Weight [kg] | | Weight [kg] | | Weight [kg] | |
| 25 | 12 | RD 750-925 | RD 925-1300 | 986 | 1486 | 1686 | 2186 | 2237 | 2837 | | |
| | | 436 | 611 | 611 | 986 | | | | | | |
| | | 2,2 | 3,1 | 4,1 | 5,3 | | | | | 13,0 | |
| 32 | 12 | RD 725-925 | RD 925-1300 | 1008 | 1508 | 1708 | 2208 | 2259 | 2859 | | |
| | | 433 | 633 | 633 | 1008 | | | | | | |
| | | 2,3 | 3,2 | 4,1 | 5,3 | | | | | 13,0 | |
| 40 | 12, 14 | RD 775-950 | RD 950-1300 | 941 | 1441 | 1641 | 2141 | 2198 | 2798 | | |
| | | 416 | 591 | 591 | 941 | | | | | | |
| | | 2,2 | 3,0 | 4,0 | 5,2 | | | | | 13,1 | |
| 50 | 12, 14 | RD 775-950 | RD 950-1300 | 936 | 1436 | 1636 | 2136 | 2193 | 2793 | | |
| | | 411 | 586 | 586 | 936 | | | | | | |
| | | 2,2 | 3,0 | 4,0 | 5,2 | | | | | 13,1 | |
| 65 | 17 | RD 975-1300 | | 915 | 1415 | 1615 | 2115 | 2166 | 2766 | | |
| | | 590 | 915 | | | | | | | | |
| | | 2,9 | 4,0 | 5,2 | 13,0 | | | | | | |
| 80 | 17 | RD 975-1300 | | 897 | 1397 | 1597 | 2097 | 2148 | 2748 | | |
| | | 572 | 897 | | | | | | | | |
| | | 2,9 | 4,0 | 5,1 | 12,9 | | | | | | |
| 100 | 19 | RD 1000-1300 | | 872 | 1372 | 1572 | 2072 | 2123 | 2723 | | |
| | | 572 | 872 | | | | | | | | |
| | | 2,8 | 3,9 | 5,1 | 12,8 | | | | | | |
| 125 | 19 | RD 1000-1300 | | 845 | 1345 | 1545 | 2045 | 2096 | 2696 | | |
| | | 545 | 845 | | | | | | | | |
| | | 2,8 | 3,9 | 5,0 | 12,7 | | | | | | |
| 150 | 19 | RD 1050-1300 | | 766 | 1266 | 1466 | 1966 | 2017 | 2617 | | |
| | | 516 | 766 | | | | | | | | |
| | | 2,6 | 3,7 | 4,9 | 12,4 | | | | | | |
| 200 | 24 | RD 1075-1325 | RD 1325-1800 | 751 | 1226 | 1426 | 1926 | 1965 | 2565 | | |
| | | 501 | 751 | | | | | | | | |
| | | 2,9 | 4,0 | 5,1 | 12,3 | | | | | | |
| 250 | 27 | RD 1125-1350 | RD 1350-1800 | 703 | 1153 | 1353 | 1853 | 1892 | 2492 | | |
| | | 478 | 703 | | | | | | | | |
| | | 2,8 | 3,9 | 5,1 | 12,1 | | | | | | |
| 300 | 27 | RD 1175-1375 | RD 1375-1800 | 679 | 1104 | 1304 | 1804 | 1843 | 2443 | | |
| | | 479 | 679 | | | | | | | | |
| | | 2,7 | 3,7 | 5,0 | 12,0 | | | | | | |
| 350 | 27 | RD 1200-1400 | RD 1400-1800 | 647 | 1047 | 1247 | 1747 | 1786 | 2386 | | |
| | | 447 | 647 | | | | | | | | |
| | | 2,7 | 3,6 | 4,9 | 11,8 | | | | | | |
| 400 | 32 | RD 1525-1800 | | 607 | 882 | 1082 | 1582 | 1582 | 2182 | | |
| | | | | | | | | | | | |
| | | 6,0 | 8,9 | 11,2 | | | | | | | |
| 500 | 36 | RD 1600-1800 | | 527 | 727 | 927 | 1427 | 1427 | 2027 | | |
| | | | | | | | | | | | |
| | | 5,4 | 8,5 | 10,8 | | | | | | | |
| 600 | 36 | RD 1650-1800 | | 458 | 608 | 808 | 1308 | 1308 | 1908 | | |
| | | | | | | | | | | | |
| | | 4,8 | 8,1 | 10,4 | | | | | | | |

We reserve the rights to modify the production program and the given data without separate notices due to the permanent company development