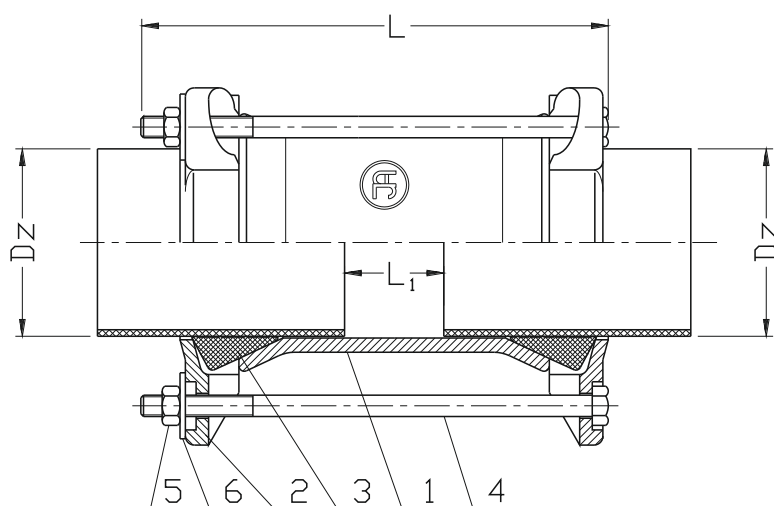


Straight coupling RR type

PN10
PN16

WATER



No.	Part	Standard execution
1	Body	Ductile cast iron EN-GJS-500-7 EN 1563
2	Flange	Ductile cast iron EN-GJS-500-7 EN 1563
3	Gasket	Rubber EPDM EN-ISO 1629
4	Screw	Steel Fe/Zn5; Stainless steel A2(*) EN ISO 4017
5	Nut	Steel Fe/Zn5; Stainless steel A4(*) EN ISO 4032
6	Washer	Steel Fe/Zn5; Stainless steel A2(*) EN ISO 7091
(*) - other material variants on special request		

DN	D ₂	L	L ₁		Weight
			[min.]	[max.]	
[mm]					[kg]
40 / 50	47-60	190	10	45	2,2
50 / 65	57-72	210	10	45	4,1
50 / 65	68-85	210	10	45	4,4
65 / 80 / 100	84-106	210	10	45	5,1
100 / 125	103-116	210	10	45	6,7
100 / 125	108-130	230	10	45	7,1
125 / 150	128-146	210	10	45	7,7
125 / 150	134-155	230	10	45	7,6
150 / 175 / 200	153-175	210	10	45	8,6
150 / 175 / 200	165-185	230	10	45	8,1
175 / 200	184-207	260	10	70	10,7
200	208-225	260	10	70	11,3
200	218-236	260	10	90	14,0
200	222-250	260	10	70	12,2
250	246-270	300	10	90	17,1
250	264-284	260	10	70	17,1
250	282-306	300	10	90	20,0
300	305-326	260	10	70	20,5
300	315-335	300	10	90	23,1
300	334-355	300	10	90	22,5
300	360-386	260	10	70	23,8
350	386-410	300	10	90	28,1
400	408-435	260	10	70	28
400	425-448	300	10	90	34,1
400	438-458	300	10	90	34,1
400	465-490	330	10	120	39,6
400	480-500	330	10	120	39,6

Product description (standard execution):

- Acceptable axial deviation on each side $\pm 6^\circ$
- EPDM sealing approved for potable water
- Stainless steel or galvanized nuts and screws
- Plastic protection caps at screw ends
- Installation in any position allowed
- Body and flange made of ductile cast iron EN-GJS 500-7
- Grooved gasket absorbs minor imperfections of the pipe surface
- Epoxy coating to EN 14901
- Product according to EN 14525
- Product marking according to EN 19; EN 1074

Application:

Water line networks: potable water and other chemically inert fluids. Connection of straight naked-end pipes made of cast iron, asbestos-cement or PVC.
Working pressure up to 1.6 MPa, temperature up to +70°C

Test control:

Water pressure test according to EN 1074-1; EN 12266-1
Seat: 1,1x PN
Body: 1,5 x PN