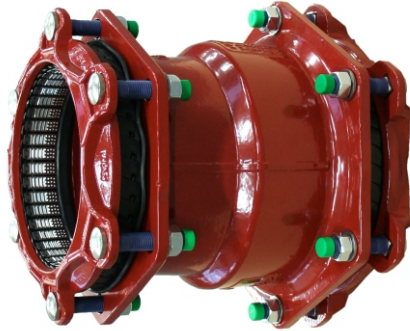
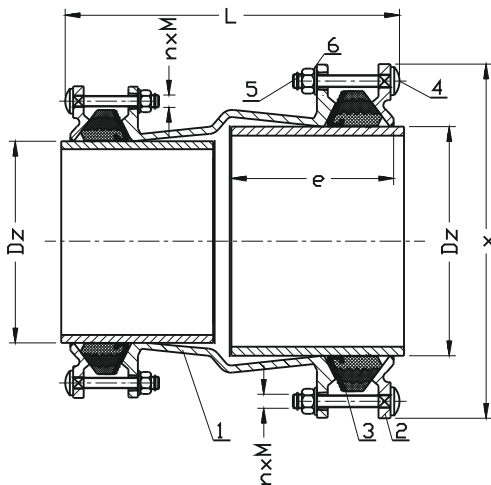


Reducer fitting
**PN10
PN16**
WATER
GAS


No.	Part	Standard execution
1	Body	Ductile cast iron EN-GJS 450-10 EN 1560
2	Retaining ring	Ductile cast iron EN-GJS 450-10 EN 1560
3	Gasket	Rubber EN-ISO 1629 NBR EN 682 EPDM EN 681-1
4	Screw	Stainless steel A2 EN ISO 4017
5	Nut	Stainless steel A4 EN ISO 4032
6	Washer	Stainless steel A2 EN ISO 7091



DN	PN water	PN gas	D ₂	L	x	e	n x M	Weight
[mm]	[bar]		[mm]				-	[kg]
50-65	16	8	46-71 / 63-90	242-268	186	95	3xM12 / 3xM12	5,5
65-80	16	8	63-90 / 84-105	242-268	204	115	3xM12 / 3xM12	6,7
80-100	16	8	84-105 / 104-132	232-265	236	110	3xM12 / 3xM16	8,3
100-125	16	8	104-132 / 132-155	238-275	264	120	3xM16 / 4xM16	11,0
100-150	16	8	104-132 / 154-192	276-323	304	120	4xM16 / 4xM16	13,8
125-150	16	8	132-155 / 154-192	276-322	304	120	4xM16 / 4xM16	14,4
150-200	16	8	154-192 / 192-232	265-321	354	120	4xM16 / 6xM16	22,0
200-225	16	8	192-232 / 230-268	340-398	386	145	6xM16 / 6xM20	32,0
225-250	16	8	230-268 / 267-310	358-424	432	170	6xM20 / 6xM20	36,0
250-300	16	8	267-310 / 315-356	356-426	490	170	6xM20 / 8xM20	49,0
300-350	10	5	315-356 / 352-393	446-530	534	225	8xM20 / 8xM20	54,0
300-400	10	5	315-356 / 392-433	462-546	571	240	8xM20 / 10xM20	69,0
350-400	10	5	352-393 / 392-433	470-554	574	240	8xM20 / 10xM20	65,0
400-425	10	5	392-433 / 392-433	500-550	623	275	10xM20 / 10xM20	86,0
400-450	10	5	392-433 / 392-433	500-550	641	275	10xM20 / 10xM20	88,0
425-475	10	5	432-464 / 481-513	555-605	672	275	10xM20 / 10xM20	100,0
450-500	10	5	450-482 / 500-532	555-605	691	275	10xM20 / 10xM20	107,0
500-550	10	5	500-532 / 548-580	550-600	739	275	12xM20 / 10xM20	113,5
550-600	10	5	548-580 / 605-637	550-600	796	275	12xM20 / 14xM20	130,0

For PE and PVC pipes recommends use steel inserts.

Product description (standard execution):

- Protection against pull out of the pipe made of stainless steel A4
- Acceptable axial deviation up to $\pm 8^\circ$
- Applicable to all types straight naked-end pipes
- Elastomer gasket enabling easy assembly
- Body and flange made of ductile cast iron EN-GJS 450-10
- Stainless steel bolts and nuts
- Plastic protection caps at screw ends
- Installation in any position allowed
- Enables connection of two pipes with different diameter each
- Epoxy coating to EN 14901

Application:

Water line networks: potable water of natural gas networks and other chemically inert fluids. Connection of straight naked-end pipes made of cast iron iron, asbestos-cement or PVC.
Working pressure up to 1.6 MPa, temperature up to +50°C

Test control:

Water pressure test according to EN 1074-1; EN 12266-1
Seat: 1,1 x PN
Body: 1,5 x PN