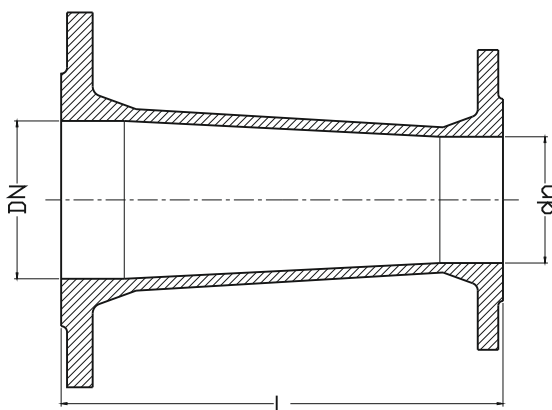


## Flanged concentric reducer Type FFR

PN10  
PN16

WATER



DN	d <sub>n</sub>	L	Weight	DN	d <sub>n</sub>	L	Weight
	[mm]		[kg]		[mm]		[kg]
50	40	150	5,9	250	80	300	27,5
65	50	200	6,9	250	100	300	28,4
80	40	200	8,0	250	150	300	33
80	50	120 / 200	8,4	250	200	300	29,5
80	65	200	8,8	300	100	300	31,3
100	50	200	9,4	300	150	300	36,7
100	65	200	9,8	300	150	300	46
100	80	200	10,2	300	200	300	51
125	80	200	14,0	300	250	300	50
125	100	200	11,2	350	300	300	54
150	50	200	14,2	400	200	300	61
150	80	200	14,6	400	250	300	66
150	80	300	16,5	400	300	300	73
150	100	200	14,8	400	350	300	85
150	100	300	16,8	500	300	600	143
150	125	200	16,0	500	400	600	162
200	50	300	22,2	600	400	600	218
200	80	300	22,5	600	500	600	238
200	100	300	23,0	800	600	600	312
200	125	300	23,7				
200	150	300	23,7				

### Product description (standard execution):

- Made of ductile cast iron EN-GJS 500-7
- UV resistant epoxy coating, EN 14901
- Flange connection according to EN 1092-2 (DIN 2501), pressure PN10, PN16
- Product according to EN 545
- Hygienic certificate PZH for potable water
- Working pressure PN10 / PN16

### Application:

In water supply systems, potable water and other chemically inert liquids as well as raw or industrial sewage