

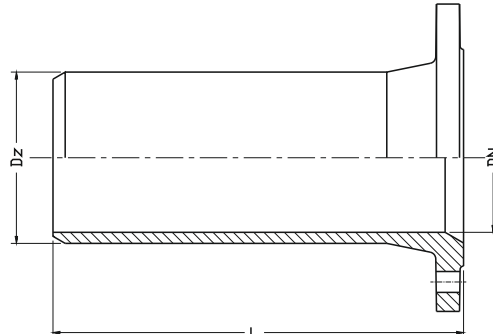
Cast iron spigot flange Type F

PN10
PN16

WATER



Cast iron spigot flange Type F 9201



DN	DZ	L
[mm]		
50	66	340
65	82	345
80	98	350
100	118	360
125	114	370
150	170	380
200	222	400
250	274	420
250	274	500
300	326	440
350	378	460
400	429	480
500	532	520
600	635	560
800	842	600
1000	1048	600

Product description (standard execution):

- Made of ductile cast iron EN-GJS 500-7
- UV resistant epoxy coating EN 14901
- Flange connection according to EN 1092-2 (DIN 2501), pressure PN10, PN16
- Product according to EN 545
- Hygienic certificate PZH for drinking water
- Working pressure PN10 / PN16

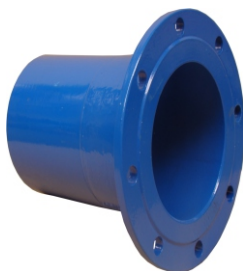
Application:

The water supply system and sewage
 Item 9201 for use with cast iron pipes
 Item 9221 for use with PVC pipe

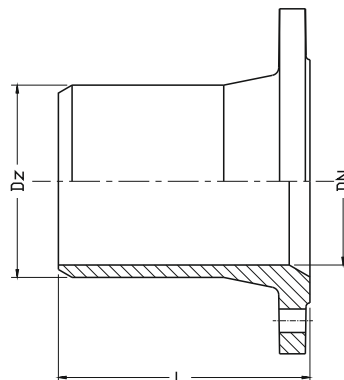
Cast iron spigot flange Type FW

PN10
PN16

WATER



Cast iron spigot flange Type FW 9221



DN	D _z	L
[mm]		
50	63	125
80	90	125
80	90	135
100	110	130
125	140	150
125	140	170
150	160	160
200	200	170
200	225	210
250	280	205
250	280	250
300	315	205
400	450	270
500	560	-
600	630	-

Product description (standard execution):

- Made of ductile cast iron EN-GJS 500-7
- UV resistant epoxy coating EN 14901
- Flange connection according to EN 1092-2 (DIN 2501), pressure PN10, PN16
- Product according to EN 545
- Hygienic certificate PZH for potable water
- Working pressure PN10 / PN16

Application:

The water supply system and sewage
 Item 9201 for use with cast iron pipes
 Item 9221 for use with PVC pipe

We reserve the rights to modify the production program and the given data without separate notices due to the permanent company development