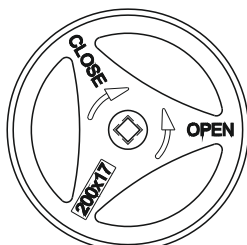
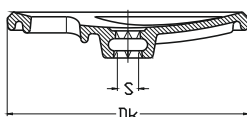


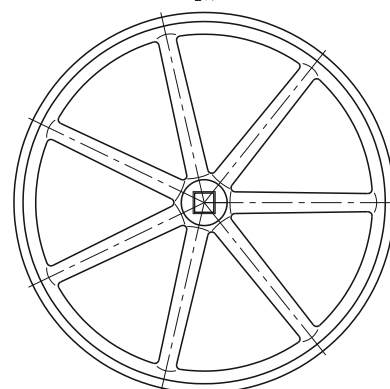
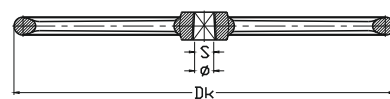
## Handwheel

**WATER**
**SEWAGE**
**GAS**


Handwheel 200x17



Dk 160-320



Dk 450-630

### Product description (standard execution):

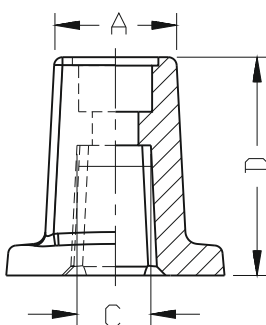
- Made of grey iron EN-GJL 250 / S235JR \*
- Screw and washer in set
- Epoxy coating 250 microns in accordance with EN 14091 UV protection

Dk	S	Weight	Dk	S/φ	Weight
[mm]		[kg]	[mm]		[kg]
160	12	0,9	450*	24	3,2
200	14	1,3	630*	24	3,8
200	17	1,6	630*	27	3,7
250	17	2,7	630*	32	3,6
250	19	2,7	630*	36	3,6
320	19	4,7	630*	φ30	3,8
320	24	4,7			
320	27	4,8			

### Application:

For manual operation - mounted directly on the valve spindle

## Valve cap

**WATER**
**SEWAGE**


### Product description (standard execution):

- Made of ductile cast iron EN-GJS 400-15
- Galvanized

DN	A	C	D
40	KW 27	KW 14.4	52
50			
65			
80			
100			
125		KW 19.4	
150			
200		KW 24.4	90
250			
300		KW 27.4	
350			
400		KW 32.4	110
450			
500			
600			

### Application:

For manual operation, mounted directly on the valve stem

We reserve the rights to modify the production program and the given data without separate notices due to the permanent company development