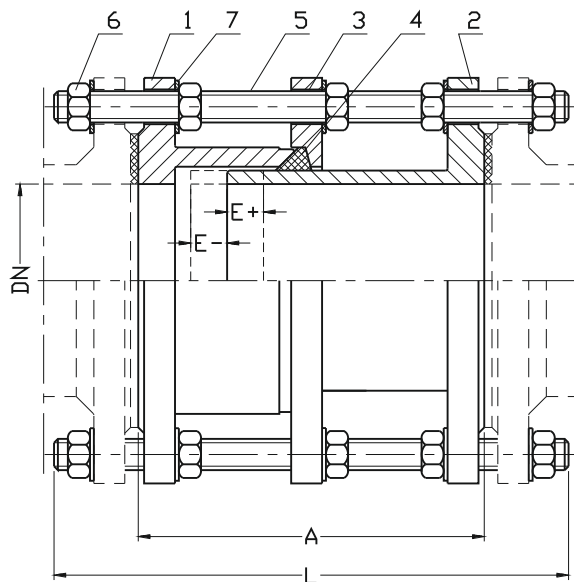


**Stainless steel mounting insert type F3**
**PN10  
PN16**
**WATER**


No.	Part	Standard execution
1	Pressure	Stainless steel 1,4301 EN ISO 10027-2
2	Flange	Stainless steel 1,4301 EN ISO 10027-2
3	Ring	Brass CW617N EN 1412
4	Gasket	Rubber EPDM; NBR(*) EN-ISO 1629
5	Threaded rods	Stainless steel A2 EN ISO 3506-1
6	Nut	Stainless steel A4 EN ISO 4032
7	Washer	Stainless steel A2 EN ISO 7091
(*) - other material variants on special request		

**Product description (standard execution):**

- Flanges made of stainless steel 1.4301
- EPDM or NBR sealing
- Threaded rods and washers in A2 steel, A4 nuts
- Product marking according to EN 19
- Flanges by EN 1092-1+ A2 pressure PN10; PN16
- Transfers all axial forces of the pipeline
- The design of the insert enables its disassembly when space is limited

**Application:**

Water line networks: potable water and other chemically inert fluids. Designed to support installation and removal of pipe fittings.  
Working pressure up to 1.6 MPa, temperature up to +70°C

**Test control:**

Water pressure test according to EN 1074-1; EN 1074-2; EN 12266-1  
Seat: 1,1 x PN  
Body: 1,5 x PN

DN	PN10				PN16			
	E+ / E-	A	L	Weight	A	L	Weight	n
	[mm]			[kg]	[mm]			[szt]
80	25	200	310	16	200	200	16	8
100	25			20			20	8
125	25			25			25	8
150	25	220	320	34	220	220	34	8
200	25		340	48			48	8
250	25		360	65			65	12
300	25	230	260	72	230	230	72	12
350	25		280	94			94	16
400	25		370	122			122	16
450	25	250	390	140	250	250	140	20
500	25		410	162			162	20
600	25		410	205			205	20
700	25	290	460	256	290	290	256	24
800	25			352			352	24
900	25			405			405	28
1000	25			485			485	28