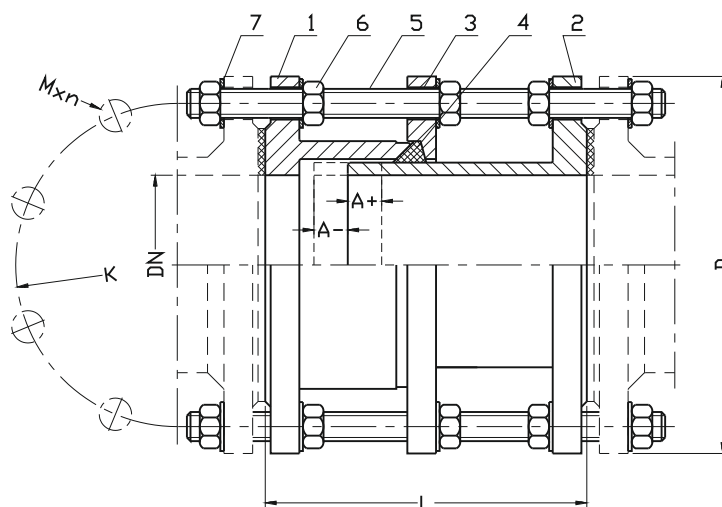
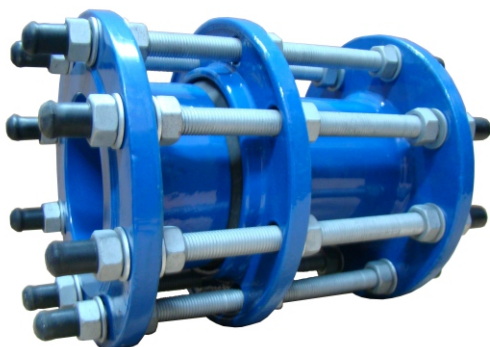


Dismantling joint F3 type
**PN10
PN16**
WATER


No.	Part	Standard execution
1	Flange	Steel 1.0037, EN 10027-2 Ductile cast iron EN-GJS 400-15 (*) EN 1560
2	Flange	Steel 1.0037, EN 10027-2 Ductile cast iron EN-GJS 400-15 (*) EN 1560
3	Flange	Steel 1.0037, EN 10027-2 Ductile cast iron EN-GJS 400-15 (*) EN 1560
4	Gasket	Rubber EPDM; NBR(*) EN-ISO 1629
5	Screw	Steel Fe/Zn5; Stainless steel A2 (*) DIN 975
6	Nut	Steel Fe/Zn5; Stainless steel A4 (*) EN ISO 4032
7	Washer	Steel Fe/Zn5 ;Stainless steel A2 (*) EN ISO 7091

(*) - other material variants on special request

Product description (standard execution):

- Flanges made of ductile cast iron EN-GJS 400-15 and steel 1.0038
- EPDM sealing
- Galvanized steel or stainless steel bolts
- Epoxy coating EN 14901
- Product marking according to EN 19; EN 1074
- Flanges by EN 1092-2 (DIN 2501) pressure PN10; PN16

Application:

Water line networks: potable water and other chemically inert fluids. Designed to support installation and removal of pipe fittings.
Working pressure up to 1.6 MPa, temperature up to +70°C

Test control:

Water pressure test according to EN 1074-1; EN 1074-2; EN 12266-1
Seat: 1,1 x PN
Body: 1,5 x PN

DN	L	D	K	Mxn	A+/ A-	Weight	
-	PN10 (PN16)				-	PN10	PN16
[mm]						[kg]	
40	180	150	110	16x4	25	9,5	
50	180	165	125	16x4	25	11,5	
65	180	185	145	16x4	25	15,5	
80	200	200	160	16x8	25	17,5	
100	200	220	180	16x8	25	20,5	
125	200	250	210	16x8	25	25,5	
150	200	285	240	20x8	25	28,5	
200	220	340	295	20x8(20x12)	25	41	43
250	220(230)	400	350(355)	20x12(24x12)	25	51	56
300	220(250)	455	400(410)	20x12(24x12)	25	74	82
350	230(260)	505(520)	460(470)	20x16(24x16)	25	88	105
400	230(270)	565(580)	515(525)	24x16(27x16)	25	115	135
450	250(270)	615(640)	565(585)	24x20(27x20)	25	135	162
500	260(280)	670(715)	620(650)	24x20(30x20)	25	143	210
600	260(300)	780(840)	725(770)	27x20(33x20)	25	199	285
700	260(300)	895(910)	840	27x24(33x24)	25	251	337
800	290(320)	1015(1025)	950	30x24(36x24)	25	327	418
900	290(320)	1115(1125)	1050	30x28(36x28)	25	392	502
1000	290(340)	1230(1255)	1160(1170)	33x28(39x28)	25	513	630
1100	300(340)	1340(1355)	1270	33x32(39x32)	25	585	790
1200	320(360)	1455(1485)	1380(1390)	36x32(45x32)	25	685	899
1400	360(380)	1675(1685)	1590	39x36(45x36)	25	-	-
1500	380(400)	1785(1820)	1700(1710)	39x36(52x36)	25	-	-
1600	390(400)	1915(1930)	1820	45x40(52x40)	25	-	-
1800	400(420)	2115(2230)	2020	45x44(52x44)	25	-	-
2000	420(440)	2325(2345)	2230	45x48(56x48)	25	-	-