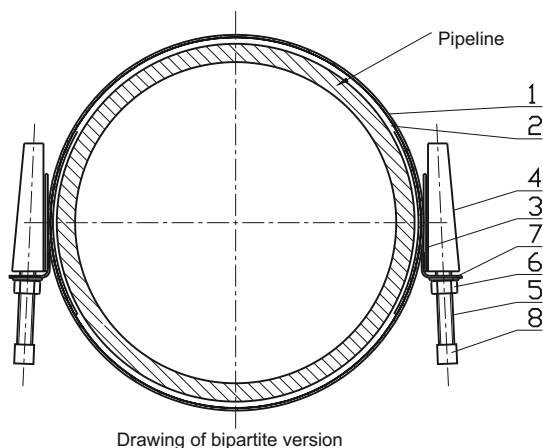
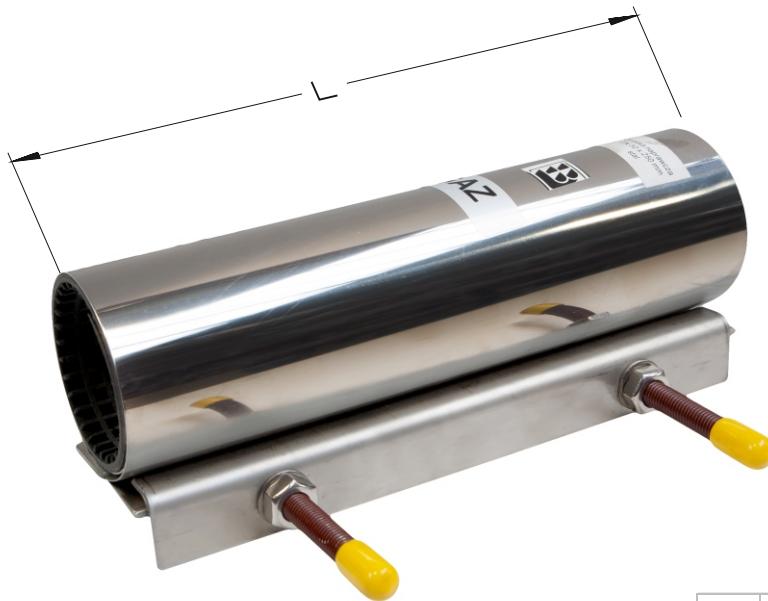


Repairing clamp GAS

PN16
GAS


No.	Part	Standard execution
1	Body	Stainless steel 1,4301 EN 10027-2
2	Gasket	Rubber NBR EN 682
3	Lock (L)	Stainless steel 1,4301 EN 10027-2
4	Moustache (U)	Stainless steel 1,4301 EN 10027-2
5	Screw	Stainless steel A2 EN ISO 4017
6	Nut	Stainless steel A4 EN ISO 4032
7	Washer"	Stainless steel A2 EN ISO 7091
8	Cap	Polyethylene PE EN ISO 1872-1

DN	Lengths L /Range [mm]							
	90	100	150	200	250	300	400	500
15	.	.						
20	.	.						
25	29-37	29-37						
32	38-46	38-46						
40	46-54	46-54	46-54					
50	54-62	54-62	54-62	54-62	54-62			
65			72-81	72-81	72-81			
80				85-95	85-95	85-95		
100				106-116	106-116	106-116	106-116	
125				132-142	132-142	132-142	132-142	
150				154-164	154-164	154-164	154-164	154-164
150				165-175	165-175	165-175	165-175	165-175
175				184-194	184-194	184-194	184-194	184-194
200				215-225	215-225	215-225	215-225	215-225
200				226-236	226-236	226-236	226-236	226-236
200				237-247	237-247	237-247	237-247	237-247
225				254-264	254-264	254-264	254-264	254-264
250				265-285	265-285	265-285	265-285	265-285
300				305-325	305-325	305-325	305-325	305-325
300				338-358	338-358	338-358	338-358	338-358
350				366-386	366-386	366-386	366-386	366-386
400				400-420	400-420	400-420	400-420	400-420
400				421-441	421-441	421-441	421-441	421-441
450				468-498	468-498	468-498	468-498	468-498
500				499-529	499-529	499-529	499-529	499-529
500				515-545	515-545	515-545	515-545	515-545
600				600-630	600-630	600-630	600-630	600-630
600				620-650	620-650	620-650	620-650	620-650

Product description (standard execution):

- Body and lock made of stainless steel EN 10027-2
- The lock clamp closure screws are welded along the entire length tangent to the sheet shell and coated with Teflon.
- Connections shall only be made with continuous welds in argon gas shield
- NBR corrugated sealing covering entire internal surface
- Clamps marked with the manufacture's label (acceptable diameter and material of pipe):
 - for diameters from DN15 to DN200 – single-part
 - for diameters from DN225 to DN450 – bipartite
 - for diameters from DN500 to DN600 and larger – tripartite
- Screws (EN ISO 4017), nuts (EN ISO 3242), washers (EN ISO 7091) made of stainless steel

Application:

For repairs of NG pipelines rated at 1.6 MPa and DN200 maximum or 1.0 MPa and DN225 minimum, from -20°C to +60°C.
Steel, PE and cast iron pipe clamps.

Specify the pipe O.D. when ordering.

We reserve the rights to modify the production program and the given data without separate notices due to the permanent company development

Installation:

In any position.