

Resilient seated gate valve for PE pipes

PN10
PN16

WATER



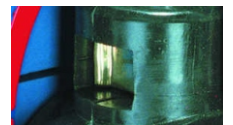
Gate valve DN80



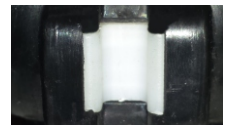
Packing cork protected against unscrewing and fully covered by additional cleaning gasket



Horizontal and vertical double spindle bearing



Replaceable wedge nut



Application of low friction sliding element

Product description (standard execution):

- Buffer zone and flexible tube positioning
- PE tube clamping ring protection against slipping
- Body bonnet and wedge made of ductile cast iron EN-GJS 400-15
- Full bore gate valve
- NBR/EPDM fully vulcanised wedge
- Application of low friction sliding element
- Wedge nut made of forged brass - replaceable
- Stainless steel spindle with rolled thread
- Low friction double spindle bearing acting both horizontal and vertical way
- O-ring spindle sealing packing cork protected against contact with medium
- Under pressure replaceable packing cork
- Forged packing cork protected against unscrewing
- Packing cork protected against dirt penetration
- Body bonnet Zinc coated screws protected by wax
- Epoxy coating minimum 250 microns according to EN 14901 GSK RAL certificate
- Product according to EN 1074-1, EN 1074-2; EN 1171
- Face to face according to producer documentation JAFAR
- Product marking according to EN 19; EN 1074

Application:

Water networks and tanks. Transport of non aggressive liquids implemented with PE and PVC pipes with working pressure up to 1.6 MPa
Working conditions:
temp. up +40°C

Test control:

Hydraulic test according to EN 1074-1; EN 1074-2; EN 12266-1
Seat: 1,1 xPN
Body: 1,5 x PN
Operation torque test.

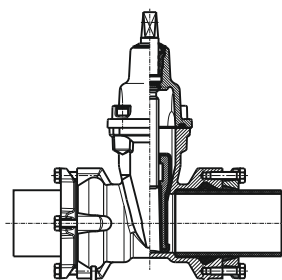
Accessories:

Extension spindle - see: 9010, 9011
Pillar with handwheel - see: 9113
Pillar for electric actuator - see: 9114
Street box - see: 9501, 9503, 9504, 9509

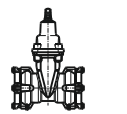
Execution variant:

Ductile cast iron EN-GJS 500-7
SS body and bonnet screws
With ISO top flange for actuator
With electric or pneumatic actuator
With inductive or electromechanical sensor
With opening indicator
Other material variants on request!

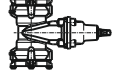
Installation:



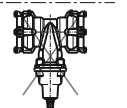
Recommended

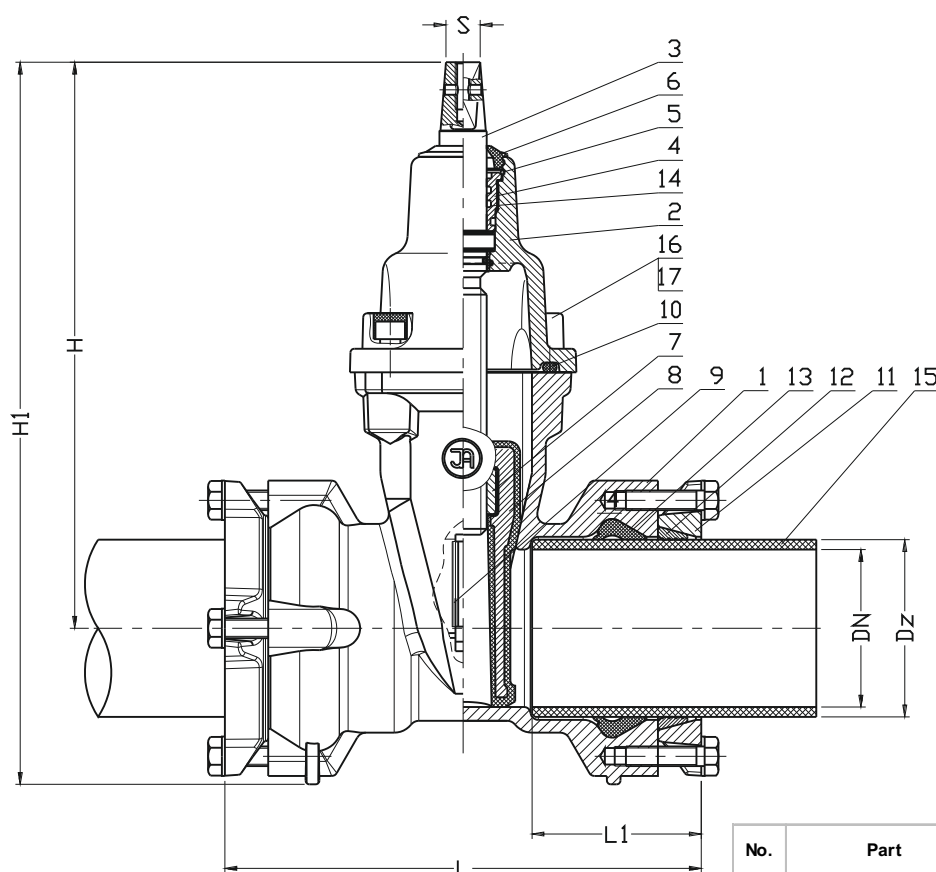


Acceptable



Not acceptable





No.	Part	Standard execution
1	Body	Ductile cast iron EN-GJS-400-15 EN 1563
2	Bonnet	Ductile cast iron EN-GJS-400-15 EN 1563
3	Spindle	Stainless steel 1.4021 EN 10088-1
4	Packing cork	Brass CW617N EN 12165
5	Protection ring	Steel 1.1260
6	Cleaning gasket	Rubber EPDM or NBR EN ISO 1629
7	Spindle nut	Brass CW617N EN 12165
8	Wedge	Ductile cast iron (DN50-DN300) EN-GJS-400-15 EN 1563 Rubber EPDM or NBR: EN ISO 1629
9	Wedge slider	Tarnoform 300 EN ISO 1874-1
10	Body-bonnet gasket	Rubber EPDM or NBR EN ISO 1629
11	Forked flange	Ductile cast iron EN-GJS-500-7 EN 1563
12	Ring	Brass CW617N EN 12165
13	FORSHED ring	Rubber EPDM or NBR EN ISO 1629
14	O-ring	Rubber EPDM or NBR EN ISO 1629
15	PE pipe	SDR11 EN 1555-2
16	Screw	Stal Fe/Zn5, stainless steel EN ISO 4762
17	Screw stopper	Wax

DN	Dz	H	H1	L	L1	S	Weight
[mm]							[kg]
50	63	230	295	226	82	14	5
65	75	265	335	240	85	17	11
80	90	290	367	242	86	17	15
100	110	325	412	252	86	19	19
100	125	325	412	260	86	19	21
125*	125	365	458	280	90	19	29
150	160	457	575	326	90	19	38
200	200	534	674	366	128	24	56
200	225	534	674	366	128	24	58
250	250	650	825	400	137	27	87
250	280	650	835	420	147	27	97
300	315	708	908	472	176	27	135

* - implementation

- other material variants on special request

We reserve the rights to modify the production program and the given data without separate notices due to the permanent company development.