

## Resilient seated gate valve BS5163 flanged

PN10  
PN16

SEWAGE

WATER



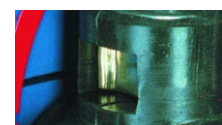
Gate valve 2112 DN65



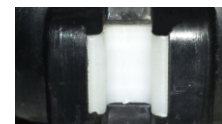
Packing cork protected against unscrewing and fully covered by additional cleaning gasket



Horizontal and vertical double spindle bearing



Replaceable wedge nut



Application of low friction sliding element

### Product description (standard execution):

- Body bonnet and wedge made of ductile cast iron EN-GJS 400-15
- Full bore gate valve
- NBR/EPDM fully vulcanised wedge
- Wedge nut made of forged brass - replaceable
- Application of low friction sliding element
- Stainless steel spindle with rolled thread
- Low friction double spindle bearing acting both horizontal and vertical way
- O-ring spindle sealing packing cork protected against contact with medium
- Under pressure replaceable packing cork
- Forged packing cork protected against unscrewing
- Packing cork protected against dirt penetration
- Body bonnet Zinc coated screws protected by wax
- Epoxy coating minimum 250 microns according to EN 14091, GSK RAL certificate
- Product according to EN 1074-1, EN 1074-2 EN 1171
- Flange connection according to EN 1092-2 (DIN 2501) pressure PN10; PN16
- Face to face according to BS 5163-1
- Product marking according to EN 19; EN 1074

### Application:

Water and sewage networks and tanks. Transport of non aggressive liquids.  
Working conditions:  
temp. up +70°C

### Execution variant:

Ductile cast iron EN-GJS 500-7  
SS body and bonnet screws  
With ISO top flange for actuator  
With electric or pneumatic actuator - see.: 2901, 2902, 2903, 2911  
With inductive or electromechanical sensor  
With opening indicator  
Other material variants on request!

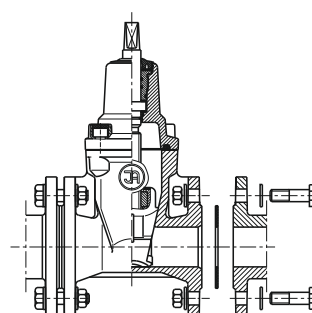
### Test control:

Hydraulic test according to EN 1074-1; EN 1074-2; EN 12266-1  
Seat: 1,1 xPN  
Body: 1,5 x PN  
Operation torque test.

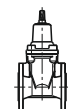
### Accessories:

Extension spindle - see: 9010, 9011  
Pillar with handwheel - see: 9113  
Pillar for electric actuator - see: 9114  
Handwheel - see: 9301  
Street box - see: 9501, 9503, 9504, 9509

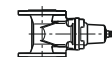
### Installation:



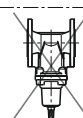
Recommended

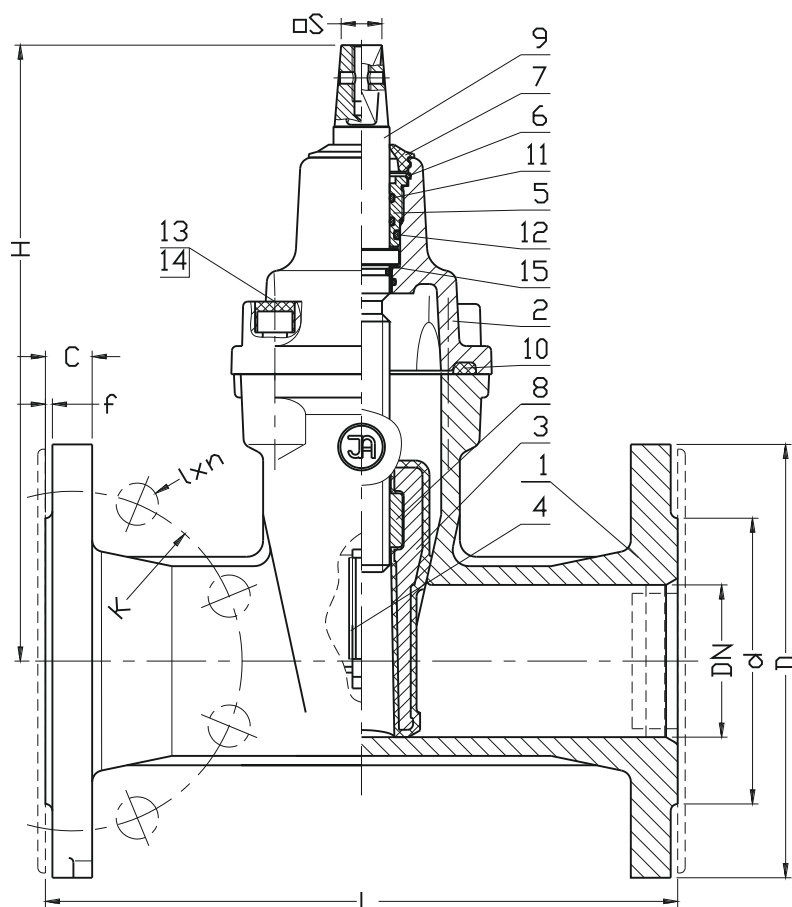


Acceptable



Not acceptable





No.	Part	Standar execution
1	Body	Ductile cast iron EN-GJS-400-15 EN 1563
2	Bonnet	Ductile cast iron EN-GJS-400-15 EN 1563
3	Wedge	Ductile cast iron (DN40-DN350) EN-GJS-400-15 EN 1563 Rubber EPDM: acc. to EN ISO 1629
4	Wedge slider	POM EN-ISO 1874-1
5	Packing cork	Brass EN 1982
6	Protection ring	Steel 1.1260 74/H-84032
7	Cleaning gasket	Rubber EPDM or NBR EN ISO 1629
8	Spindle nut	Brass EN 1982
9	Spindle	Stainless Steel 1.4021 EN 10088-1
10	Body-bonnet gasket	Rubber EPDM or NBR EN ISO 1629
11	O-ring	Rubber EPDM or NBR EN ISO 1629
13	Screw	Steel Fe/Zn5, stainless steel Acc. to EN ISO 4762
14	Screw stopper	Wax
15	Washer	Polyamide PA6 EN ISO 1874-1

DN	L	H	d	D	K PN16 (PN10)	I PN16 (PN10)	C	f	n PN16 (PN10)	S	Turn for full open	Weight
[mm]										-	[mm]	[kg]
40	165	220	84	150	110	19	16	3	4	14	11	8,5
50	178	230	99	165	125	19	19	3	4	14	13,5	10,5
65	190	265	118	185	145	19	19	3	4	17	14	15
80	203	290	132	200	160	19	19	3	8	17	17	19,5
100	229	325	156	220	180	19	19	3	8	19	23	26
125	254	365	184	250	210	19	19	3	8	19	26	33,5
150	267	457	211	285	240	23	20	3	8	19	30,5	48,2
200	292	534	266	340	295	23	22	3	12 (8)	24	34,5	73,3
250	330	633	319	405	355 (350)	28 (23)	25	3	12	27	42,5	97
300	356	708	370	460	410 (400)	28 (23)	27	4	12	27	51	134,5