

Resilient seated gate valve for gas flanged
PN10
PN16
GAS


Gate valve 2302 DN80



Gate valve 2311 DN100


Product description (standard execution):

- Body bonnet and wedge made of ductile cast iron EN-GJS 400-15
- Full bore gate valve
- NBR fully vulcanised wedge
- Application of low friction sliding element
- Wedge nut made of forged brass - replaceable
- Stainless steel spindle with rolled thread
- Low friction double spindle bearing acting both horizontal and vertical way
- O-ring spindle sealing packing cork protected against contact with medium
- Under pressure replaceable packing cork
- Forged packing cork protected against unscrewing
- Packing cork protected against dirt penetration
- Body bonnet Zinc coated screws protected by wax
- Epoxy coating minimum 250 microns according to EN 14901 GSK RAL certificate
- Product according to EN 13774
- Flange connection according to EN 1092-2; (DIN 2501) pressure PN10; PN16
- Face to face according to EN 558-A1 F5 (DIN 3202) – catalogue number 2302
- Face to face according to EN 558-A1 F4 (DIN 3202) – catalogue number 2311
- Product marking according to EN 19; EN 1171

Application:

Gas lines networks.
 Working conditions:
 temp. from -20°C up +60°C
 pressure up to 1,6 MPa

Test control:

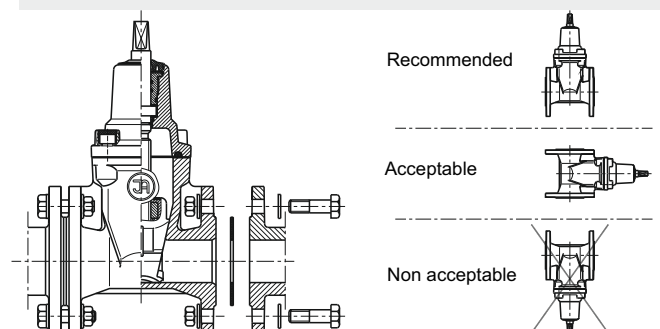
Water pressure test according to EN 1074-1, EN 1074- 2, EN 12266-1
 Seat: 1,1 x PN;
 Body: 1,5 x PN
 Air pressure test according to EN 12266-1
 Seat: 1,1 x PN;
 Body: 1,1 x PN
 Operation torque test.

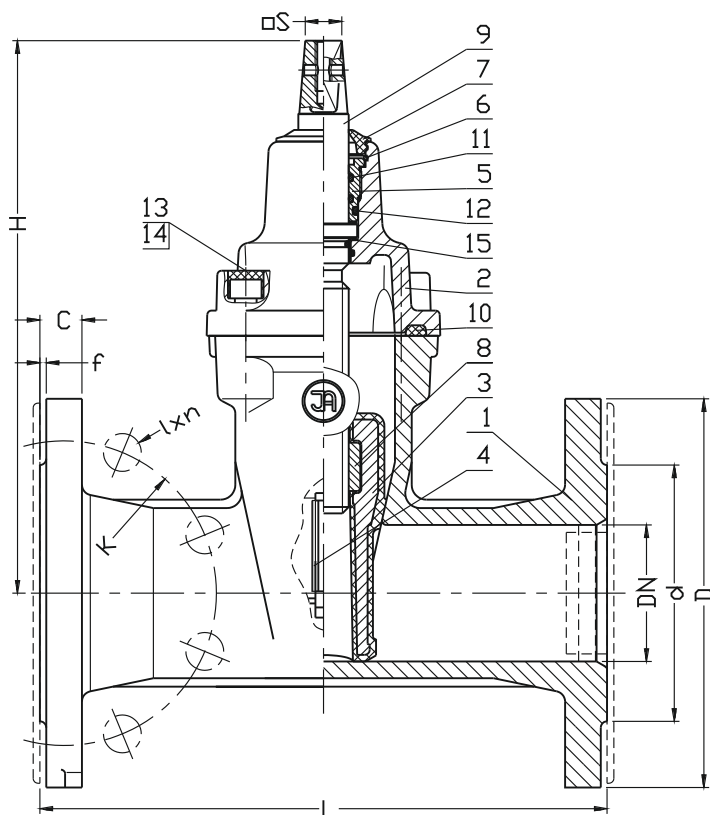
Accessories:

Extension spindle - see: 9006, 9007
 Extension spindle with position indicator - see 9020, 9021
 Pillar with handwheel - see: 9113
 Pillar for electric actuator - see: 9114
 Handwheel - see: 9301
 Street box - see: 9505, 9506, 9507, 9508

Execution variant:

Ductile cast iron EN-GJS 350-22 LT temp. from -30°C
 SS body and bonnet screws
 With ISO top flange for actuator
 With electric or pneumatic actuator - see: 2931, 2932
 With inductive or electromechanical sensor
 With opening indicator

Installation:




No.	Part	Standar execution
1	Body	Ductile cast iron EN-GJS-400-15, EN-GJS-350-22-LT (*) EN 1563
2	Bonnet	Ductile cast iron EN-GJS-400-15, EN-GJS-350-22-LT (*) EN 1563
3	Wedge	Brass CW617N PN-EN 12165 (DN32) Ductile cast iron (DN40-DN350) EN-GJS-400-15, EN-GJS-350-22-LT (*) EN 1563 Rubber NBR acc.to: EN ISO 1629
4	Wedge slider	Tarnoform 300 EN ISO 1874-1
5	Packing cork	Brass CW617N EN 12165 Bronze CW309 EN 12163
6	Protection ring	Steel 1.1260
7	Cleaning gasket	Rubber NBR EN ISO 1629
8	Spindle nut	Brass CW617N EN 12165 Bronze CW309 EN 12163
9	Spindle	Stainless steel 1.4021, 1.4301 (*), 1.4462 (*) EN 10088-1
10	Body-bonnet gasket	Rubber NBR EN ISO 1629
11 12	O-Ring	Rubber NBR EN ISO 1629
13	Screw	Steel Fe/Zn5, stainless steel (*) EN ISO 4762
14	Screw stopper	Wax
15	Washer	Tarnoform 300 EN ISO 1874-1
(*) - other material variants on special request		

DN	2311 L	2302 L	H	d PN16 (PN10)	D PN16 (PN10)	K PN16 (PN10)	I PN16 (PN10)	C	f	n PN16 (PN10)	Turns for full open	S	Weight	Weight
[mm]											-	[mm]	2311 [kg]	2302 [kg]
32	130	-	145	76	140	100	19	18	3	4	9	12	5	-
40	140	240	220	84	150	110	19	19	3	4	11	14	9	10
50	150	250	230	99	165	125	19	19	3	4	13,5	14	10	11
65	170	270	265	118	185	145	19	19	3	4	14	17	14	16
80	180	280	290	132	200	160	19	19	3	8	17	17	15	17
100	190	300	325	156	220	180	19	19	3	8	21	19	21	23
125	200	325	365	184	250	210	19	19	3	8	26	19	31	39
150	210	350	457	211	285	240	23	19	3	8	26	19	41	48
200	230	400	534	266	340	295	23	20	3	12 (8)	34,5	24	62	77
250	250	450	633	319	405	355 (350)	28 (23)	22	3	12	42,5	27	94	106
300	270	500	708	370	460	410 (400)	28 (23)	25	4	12	51	27	122	148
350	290	550	790	429	520	470 (460)	28 (23)	27	4	16	60	27	216	254