

**Resilient seated gate valve
with spigot ends**

**PN10
PN16**

SEWAGE

WATER



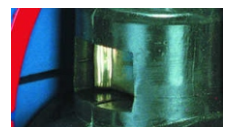
Gate valve DN50



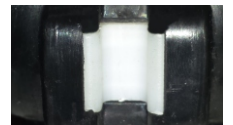
Packing cork protected against unscrewing and fully covered by additional cleaning gasket



Horizontal and vertical double spindle bearing



Replaceable wedge nut



Application of low friction sliding element

Product description (standard execution):

- Easy installation with sockets cast-iron pipes
- Body bonnet and wedge made of ductile cast iron EN-GJS 400-15
- Full bore gate valve
- NBR/EPDM fully vulcanised wedge
- Wedge nut made of forged brass - replaceable
- Application of low friction sliding element
- Stainless steel spindle with rolled thread
- Low friction double spindle bearing acting both horizontal and vertical way
- O-ring spindle sealing packing cork protected against contact with medium
- Under pressure replaceable packing cork
- Forged packing cork protected against unscrewing
- Packing cork protected against dirt penetration
- Body bonnet Zinc coated screws protected by wax
- Epoxy coating minimum 250 microns according to EN 14091
- Product according to EN 1074-1, EN 1074-2; EN 1171
- Face to face according to producer documentation JAFAR
- Product marking according to EN 19; EN 1074

Application:

Water and sewage networks and tanks. Transport of non aggressive liquids.
Working conditions:
temp. up +70°C

Test control:

Hydraulic test according to EN 1074-1; EN 1074-2; EN 12266-1
Seat: 1,1 xPN
Body: 1,5 x PN
Operation torque test.

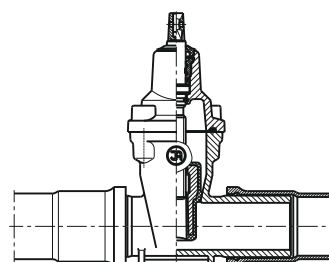
Accessories:

Extension spindle - see: 9010, 9011
Pillar with handwheel - see: 9113
Pillar for electric actuator - see: 9114
Street box - see: 9501, 9503, 9504, 9509

Execution variant:

Ductile cast iron EN-GJS 500-7
SS body and bonnet screws
With ISO top flange for actuator
With electric or pneumatic actuator - see.: 2901 2902 2903 2911
With inductive or electromechanical sensor
With opening indicator
Other material variants on request!

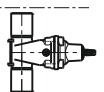
Installation:



Recommended

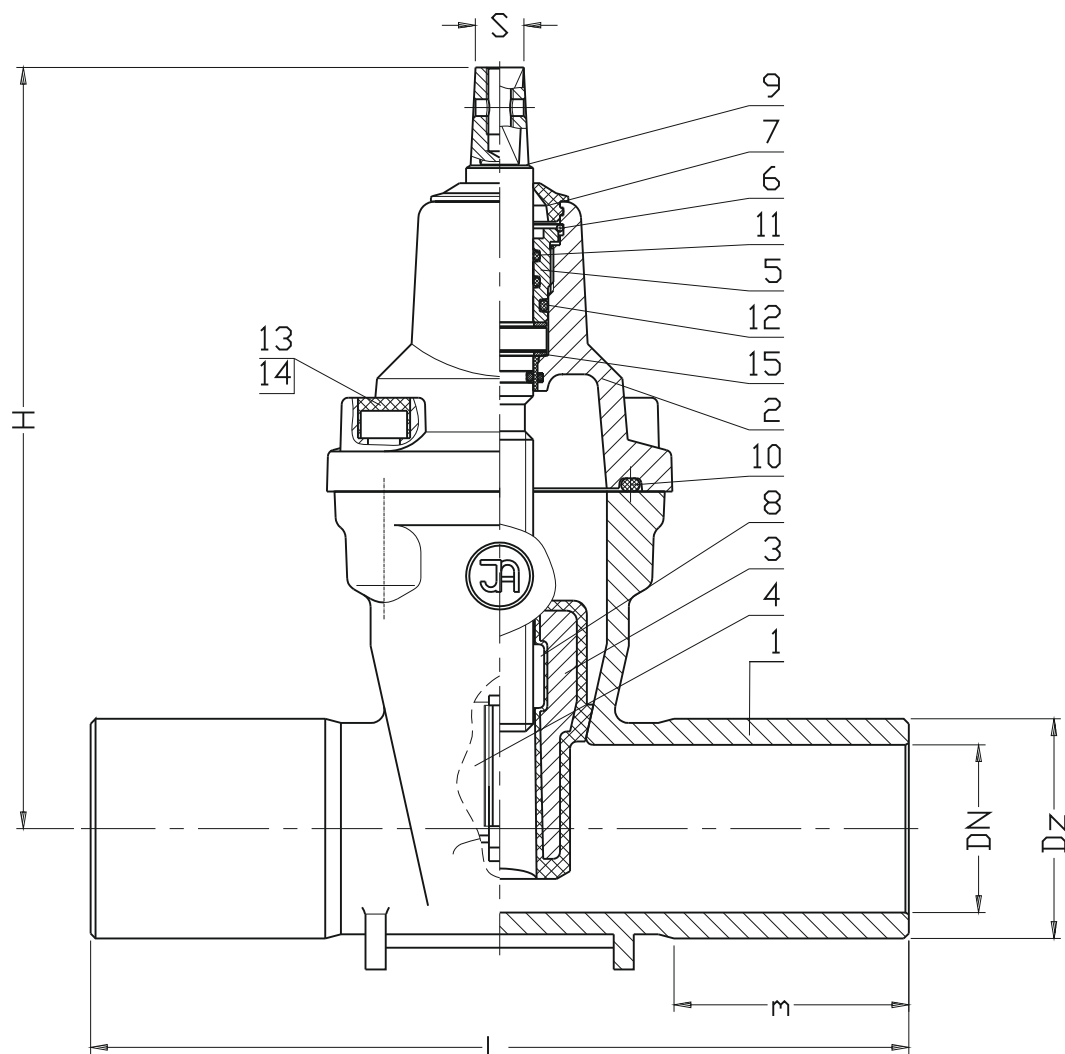


Acceptable



Not acceptable





DN	Dz	L	m	H	S	Weight
[mm]						[kg]
50	66	244	70	230	14	8
65	82	264	80	265	17	9
80	98	274	85	290	17	12
100	118	294	85	325	19	21
125	144	319	87	365	19	29
150	170	344	95	457	19	42
200	222	394	110	534	24	69
250	274	444	130	633	27	94
300	326	494	130	708	27	141

No.	Part	Standard execution
1	Body	Ductile cast iron EN-GJS-500-7 EN 1563
2	Bonnet	Ductile cast iron EN-GJS-500-7 EN 1563
3	Wedge	Ductile cast iron EN-GJS-500-7 EN 1563 Rubber EPDM PIEN ISO 1629
4	Wedge slider	POM EN ISO 1874-1
5	Packing cork	Brass EN 1982
6	Protection ring	Steel 1.1260
7	Cleaning gasket	Rubber EPDM EN ISO 1629
8	Spindle nut	Brass EN 1982
9	Spindle	Stainless steel 1.4021 EN 10088-1
10	Body-bonnet gasket	Rubber EPDM EN ISO 1629
11	O-Ring	Rubber EPDM EN ISO 1629
12		
13	Screw	Steel Fe/Zn5 stainless steel EN ISO 4762
14	Screw stopper	Wax
15	Washer	Polyamide PA6 EN ISO 1874-1

- other material variants on special request

We reserve the rights to modify the production program and the given data without separate notices due to the permanent company development.