

**Gate valve**  
soft seated with PE pipe ends

**PN16**

**WATER**



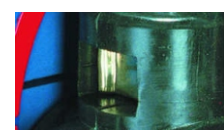
Gate valve DN100



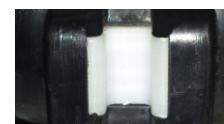
Packing cork protected against unscrewing and fully covered by additional cleaning gasket



Horizontal and vertical double spindle bearing



Replaceable wedge nut



Application of low friction sliding element

## Product description (standard execution):

- Body bonnet and wedge made of ductile cast iron EN-GJS 400-15
- Full bore gate valve
- EPDM/NBR fully vulcanised wedge
- Application of low friction sliding element
- Forged replaceable wedge nut made of brass
- Stainless steel spindle with rolled thread
- Low friction double spindle bearing both horizontal and vertical way
- O-ring spindle sealing packing cork protected against medium
- Under pressure replaceable packing cork
- Forged packing cork protected against unscrewing
- Packing cork protected against dirt penetration
- Body bonnet Zinc coated screws protected by wax
- Epoxy coating minimum 250 microns according to EN 14901GSK RAL certificate
- Article according to EN 1074-1, EN 1074-2; EN 1171
- End connectors made of PE 100 SDR 11 pipe
- The PE pipe end connectors enables direct welding into PE pipes
- PE/Steel connection sealed with a plastic shrink hose ring
- Product marking according to EN 19; EN 1171

## Application:

Water networks and tanks. Transport of non aggressive liquids.  
Working conditions:  
temp. from -10°C to + 40°C  
pressure up to 1,6 MPa

## Test control:

Hydraulic test according to EN 1074-1; EN 1074-2; EN 12266-1  
Seat: 1,1 x PN  
Body: 1,5 x PN  
Operation torque test.

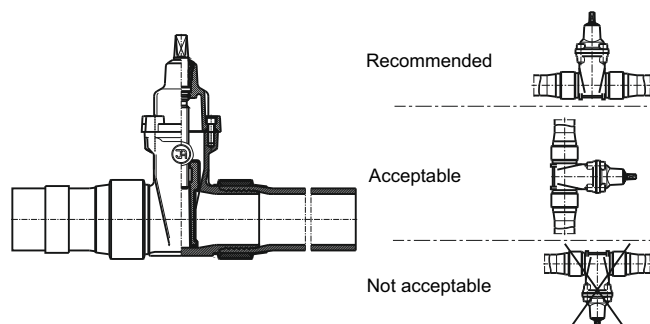
## Accessories

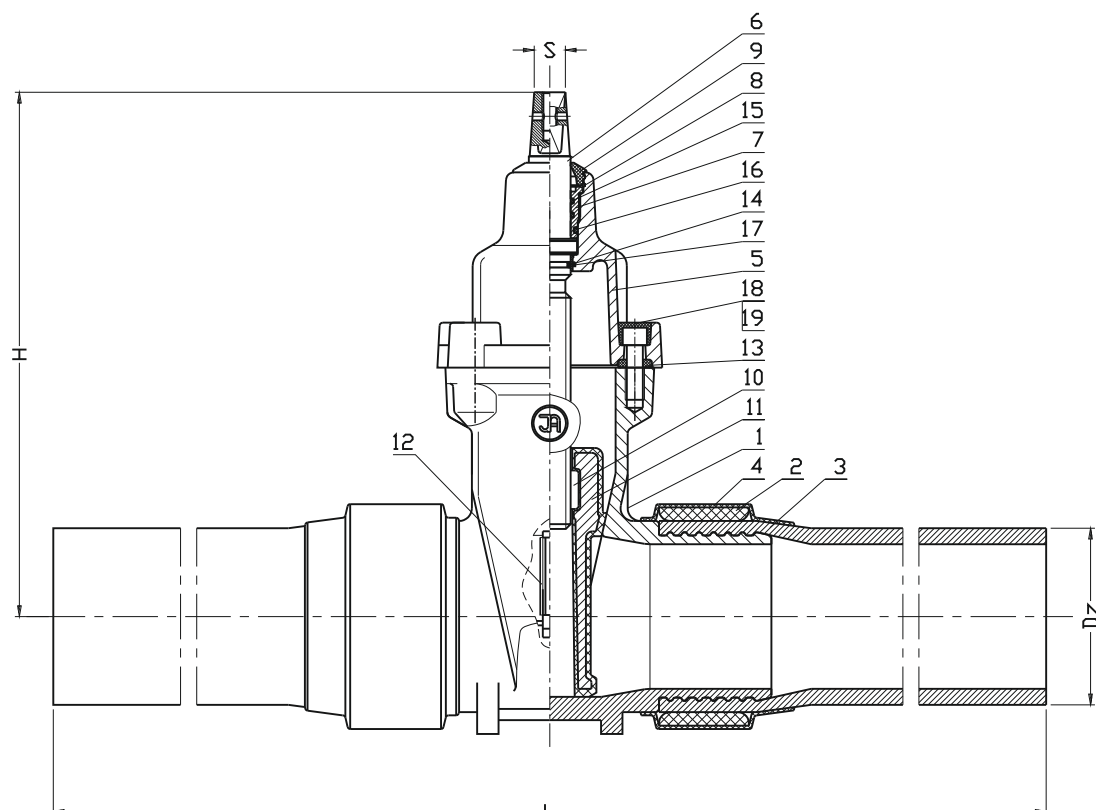
Extension spindle - see: 9010, 9011  
Pillar with handwheel - see: 9113  
Pillar for electric actuator - see: 9114  
Street box - see: 9501, 9503, 9504, 9509

## Execution variant:

SS body and bonnet screws  
Connectors adapted for PE pipes PE100 SDR17  
With Protegol coating

## Instalation:





No.	Part	Standard execution
1	Body	Ductile cast iron EN-GJS 400-15 EN 1560
2	Clamping ring	Steel 1.0037 EN 10027-2
3	PE pipe ends	PE 100 SDR 11 EN 1555-2
4	Shrink hose	Plastic
5	Bonnet	Ductile cast iron EN-GJS 400-15 EN 1560
6	Spindle	Steel 1.4021 EN 10027-2
7	Packing cork	Brass CW617N EN 1412
8	Protection ring	Steel 1.4310 EN 10027-2
9	Cleaning gasket	Rubber EPDM, NBR(*) EN-ISO 1629
10	Spindle gasket	Brass CW617N EN 1412
11	Wedge	Brass CW617N (DN25-DN32) Ductile cast iron EN-GJS 400-15(DN40-DN300) Rubber EPDM, NBR(*) EN 1412, EN 1560, EN-ISO 1629, EN ISO 29988-1
12	Wedge slider	Poliacetal POM-K EN ISO 29988-1
13	Body-bonnet gasket	Rubber EPDM, NBR(*) EN-ISO 1629
14 17	O-ring	Rubber EPDM, NBR(*) EN-ISO 1629
18	Screw	Steel Fe/Zn5, Stainless steel A2(*) EN ISO 4762
19	Screw stopper	Wax
(*) other material variants on special request		

DN	L	H	Dz	S	Turns for full open	Weight
[mm]					-	[kg]
25	800	130	32	12	7,5	4
32	800	145	40	12	9	5
40	850	220	50	14	11	6
50	850	230	63	14	13,5	11
65	860	265	75	17	14	13
80	860	290	90	17	17	21
100	900	325	110	19	21	24
125	1100	365	125	19	26	33
125	1100	365	140	19	26	38
150	1100	457	160	19	26	49
150	1100	457	180	19	26	52
200	1100	534	200	24	34,5	76
200	1100	534	225	24	34,5	80
250	1200	633	250	27	42,5	102
250	1200	633	280	27	42,5	110
300	1300	708	315	27	51	150

We reserve the rights to modify the production program and the given data without separate notices due to the permanent company development.